

DO NOT REMOVE FROM OFFICE

FILED  
RECEIVED  
FEB 23 1978  
COUNTY SURVEYOR  
DOUGLAS COUNTY, ORE.

**SURVEY FOR**  
**U. S. FOREST SERVICE-SIUSLAW NATIONAL FOREST**  
BETWEEN SECTIONS 27 & 34, T. 19 S., R. 10 W., W. M.  
DOUGLAS COUNTY, OREGON  
SCALE: 1" = 200 FT.  
JULY----SEPTEMBER 1977

BEARINGS RECORDED ARE FROM CORNER TO B.T.  
WITH DISTANCE TO SIDE AND CENTER ABOVE  
ROOT CROWN. BEARING TREES MARKED WITH  
DOUBLE BLAZE APPROXIMATELY 12" BY 4" WITH  
A LOWER 6" BY 4" BLAZE SCRIBED B.T.  
COMPASS DECL. 20° E

FIELD BOOK REFERENCE - 10F2 AND 2 OF 2

ALL BRASS CAPS SET ARE 2 1/4" WELDED ON 2" BY 30" GALVANIZED IRON PIPE  
WITH FLANGE BASE, SET 24" IN THE GROUND AND MARKED WITH 1/8" INCH  
STEEL DIES.

THIS PLAT REPRESENTS A RETRACEMENT AND MONUMENTATION OF THE  
SOUTH BOUNDARY OF SECTION 27, T19S, R10W, W.M. THE SUBDIVISION OF  
T19S, R10W, W.M. WAS PERFORMED BY THE HENRY L. CHANDLER UNDER CONTRACT  
NO. 705, JULY 1899.

THE 1/4 CORNER WAS REESTABLISHED BY GLO FIELD NOTES CALLS AND BLAZE  
TREE FOR ALINEMENT. THE EAST 1/4 CORNER WAS SINGLE PROPORTIONED  
BETWEEN THE 1/4 CORNER AND THE SECTION CORNER. LINE WAS POSTED  
TO U.S.F.S. STANDARDS.

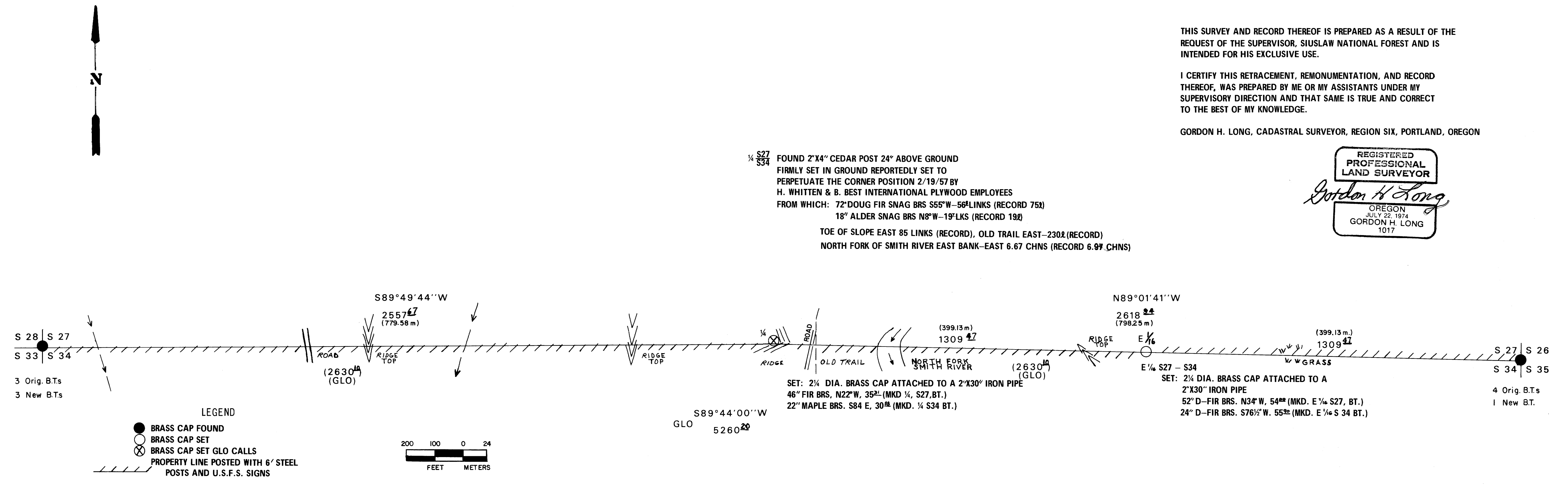
BEARING ARE BASED ON SOLAR OBSERVATION NEAR THE SECTION CORNER  
COMMON TO SECTIONS 26, 27, 34 & 35, T19S, R10W W.M.

THIS SURVEY AND RECORD THEREOF IS PREPARED AS A RESULT OF THE  
REQUEST OF THE SUPERVISOR, SIUSLAW NATIONAL FOREST AND IS  
INTENDED FOR HIS EXCLUSIVE USE.

I CERTIFY THIS RETRACEMENT, REMONUMENTATION, AND RECORD  
THEREOF, WAS PREPARED BY ME OR MY ASSISTANTS UNDER MY  
SUPERVISORY DIRECTION AND THAT SAME IS TRUE AND CORRECT  
TO THE BEST OF MY KNOWLEDGE.

GORDON H. LONG, CADASTRAL SURVEYOR, REGION SIX, PORTLAND, OREGON

REGISTERED  
PROFESSIONAL  
LAND SURVEYOR  
*Gordon H. Long*  
OREGON  
JULY 22, 1974  
GORDON H. LONG  
1017



COUNTY SURVEYORS FILE DATA  
DO NOT REMOVE FROM OFFICE

M 65-63

FIELD NOTES

DEPENDENT RESURVEY OF THE SOUTH BOUNDARY

of

SECTION 27, T19S R10W

of the

WILLAMETTE MERIDIAN

DOUGLAS COUNTY, OREGON

for

U.S. FOREST SERVICE

SIUSLAW NATIONAL FOREST

MAPLETON DISTRICT

EXECUTED BY

GORDON H. LONG  
REGION SIX CADASTRAL SURVEYOR

Starting Date: June 27, 1977

Completion Date: September 30, 1977

1. This is a dependent resurvey of the south boundary of Section 27, T19S R10W, WM, performed under the land line location program for the purpose of locating and monumenting the boundaries of the U.S. Forest Service lands.

2. The basis of bearings or base line of this survey is common to solar observation for P-Line to Road #2300-94 surveyed by U.S. Forest Service, Corvallis surveying crew for Mapleton District in March 30, 1977.

3. Work began June 27, 1977, with a reconnaissance of south boundary of Section 27, which revealed that the two section corners were existing and the 1/4 corner could be reestablished by GLO field notes calls distance to several natural objects and two blaze trees with 70 and 61 growth rings that were counted (trees are not dead snags). The E 1/16 was established by the rules of single proportionate measurement as described in the "Manual of Surveying Instruction", 1973 Edition.

4. I found the following data on record concerning the corners common to Section 28, 27, 33 & 34 and 27, 26, 35 & 34.

Both section corners were re-monumented from original BT's by Douglas County surveyor in 1964 and 1968.

1/4 section corner common to S27 & 34 T19S R10W W.M.

Approximately 16 man-hours were spent diligently searching for evidence of the original 1/4 corner and bearing trees. Found a 2" x 4" cedar post 24" above ground firmly set. Reportedly set by H. Whitten and B. Best International Plywood employees February 19, 1957, to perpetuate the corner position from which:

An 18" alder snag with scar and overgrowth bears N  $8^{\circ}$  W @  $19\frac{7}{8}$  lks (<sup>19</sup> lks record). Face was chopped out, no scribing discernable; a 72" Douglas-fir snag bears S  $55^{\circ}$  W at  $56\frac{0}{8}$  lks (record 75 lks) only a shell remains; toe of slope bears East @ 85 lks (record). Center of old trail or roadway bears East @ 230 lks (record); North Fork of Smith River East bank bears East @ 6.67 chains (record 6.97).

The bearings to the recovered trees are in harmony. The distance to the NW bearing tree is compatible; the record distance to the SW bearing tree is 75 links, measurement on the ground is 57 links, which indicates the possibility of transposition of numbers. Trial corner positions were made holding to the record distances. The field calls were not in harmony with these positions. After running the section line between the known corners east and west of the recovered location, I found that had I used the rules of single proportion for the 1/4 corner, the position would fall  $26\frac{0}{4}$  ft. south and  $30\frac{4}{7}$  ft. east. This position would not be in harmony with the calls in the field notes. Therefore, I accept the position of the corner as perpetuated by the cedar 2 x 4. I remonument this point as the original 1/4 corner common to Sections 27 and 34.

5. Bearings recorded are from corner to BT with distance to side and center above root crown. Bearing trees marked with double blaze approximately 12" by 4" with a lower 6" by 4" blaze scribed BT compass Decl. 20 degrees.

This survey was executed by the use of two instruments, a Wild T1A 20" Theodilite SN #126097 and Kern DKM1 10" Theodilite SN #66950. All measurements made with 200 foot X 1/2 Keson Tape SN #104 and Tension Handles. Traverse computation and final survey data calculated by computer.