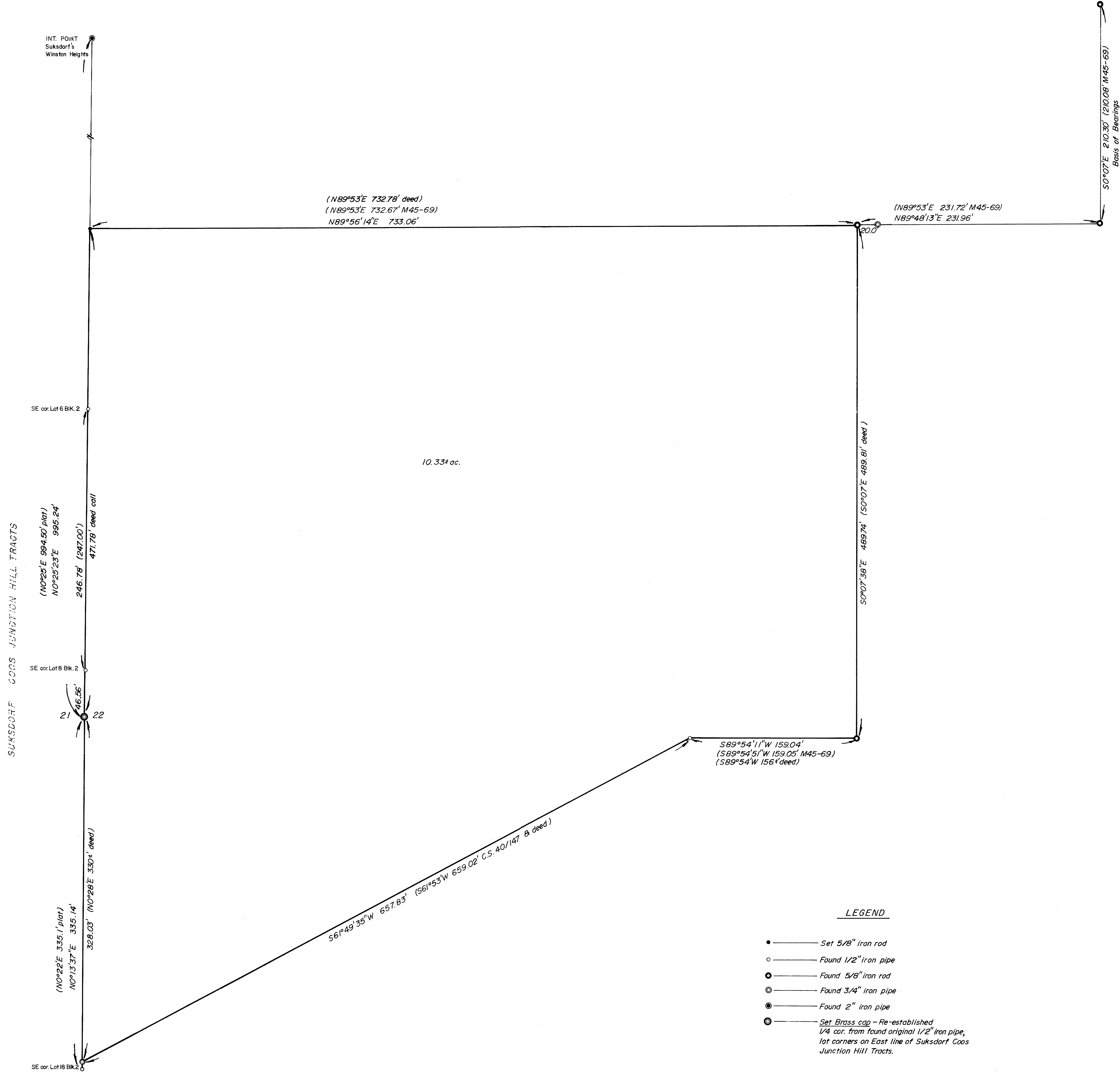


COUNTY SURVEYORS FILE DATA  
DO NOT REMOVE FROM OFFICE

FILED *1/2*  
RECEIVED *1/2*  
FEB 14 1978  
COUNTY SURVEYOR  
DOUGLAS COUNTY, ORE.  
*1/2*



SUKSDORF COOS JUNCTION HILL TRACTS

10.33+ ac.

LEGEND

- — Set 5/8" iron rod
- — Found 1/2" iron pipe
- — Found 5/8" iron rod
- ⊙ — Found 3/4" iron pipe
- ⊙ — Found 2" iron pipe
- ⊙ — Set Brass cap - Re-established 1/4 cor. from found original 1/2" iron pipe, lot corners on East line of Suksdorf Coos Junction Hill Tracts.

REGISTERED  
PROFESSIONAL  
LAND SURVEYOR

*Harold Baughman*

OREGON  
JULY 20 1964  
SUN 3 30 PM '64

COUNTY SURVEYORS FILE DATA  
DO NOT REMOVE FROM OFFICE

SURVEY FOR PROPERTY CORNERS IN SECTION 22, T.28S. R.6W. W.M.		
FOR: FRED HARDER	SCALE 1"=50'	DRAWN BY Eab
BAUGHMAN TECHNICAL SERVICES INC.		REVISED
DATE Feb. 1978	APPROVED BY	DRAWING NUMBER FM 1-27