

COUNTY SURVEYORS FILE ONLY
DO NOT REMOVE FROM OFFICE

SURVEY FOR DEED DESCRIPTION IN SECTION 7, 18, & 19, T.29S., R.5W., W.M. & SECTION 12, T.29S., R.6W., W.M.

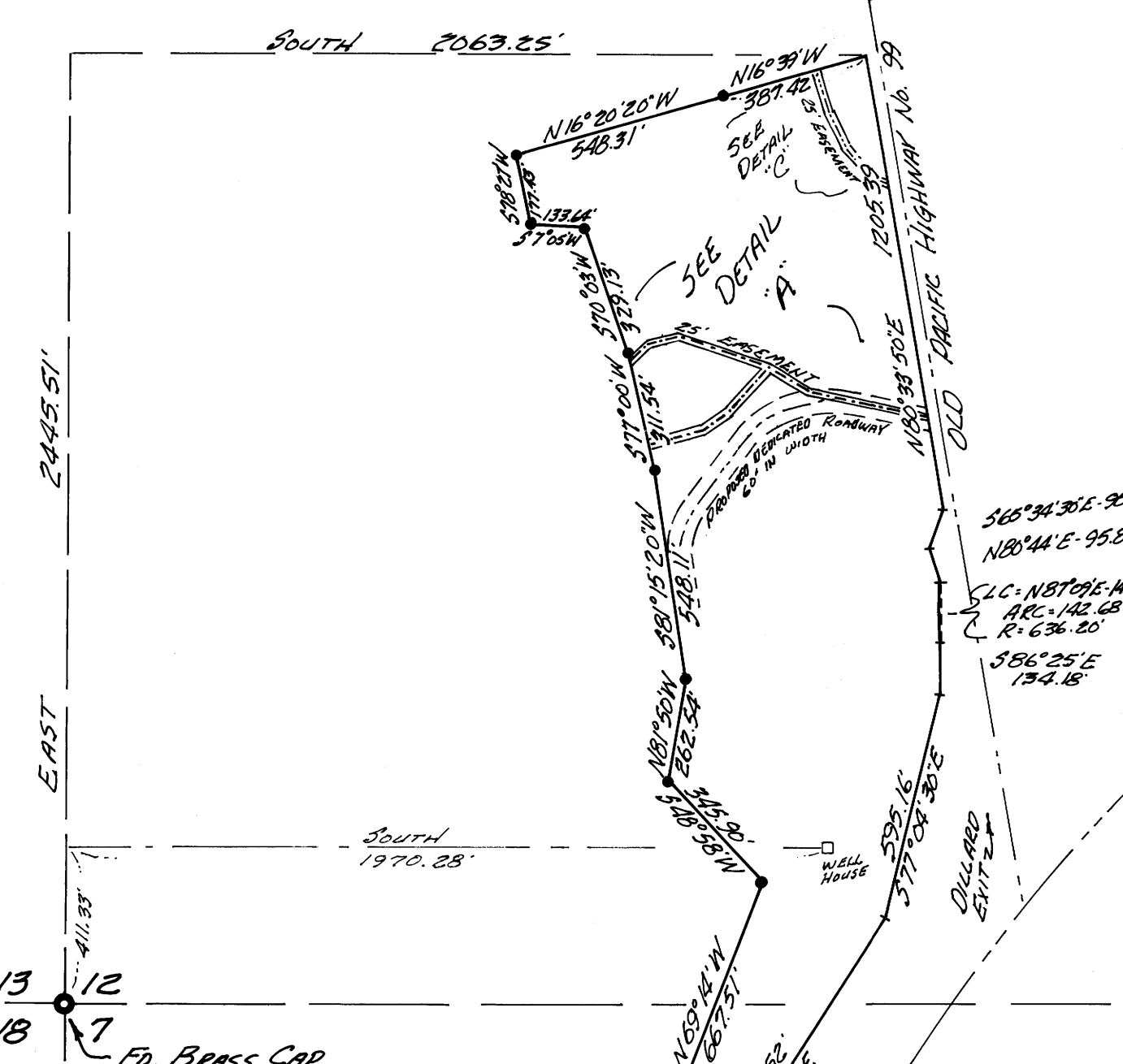
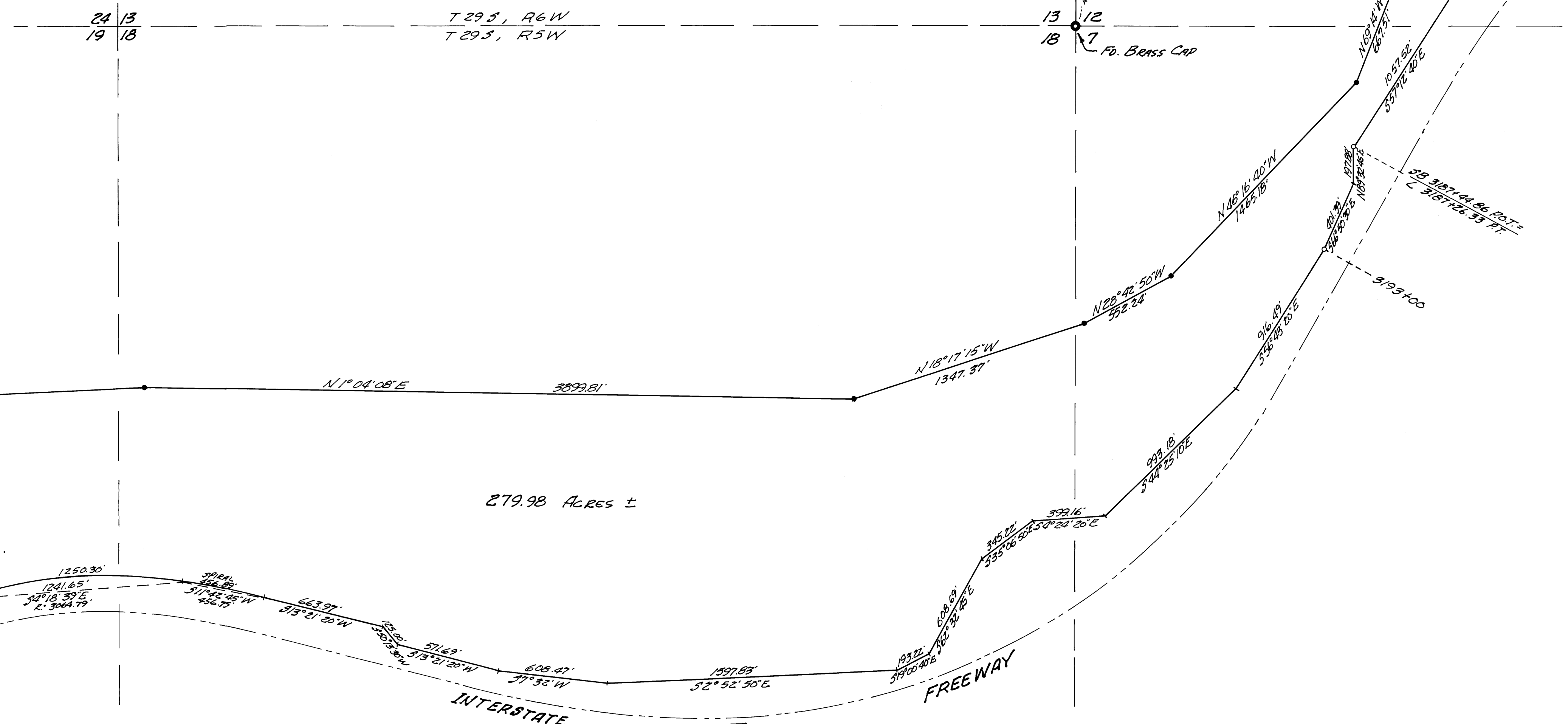
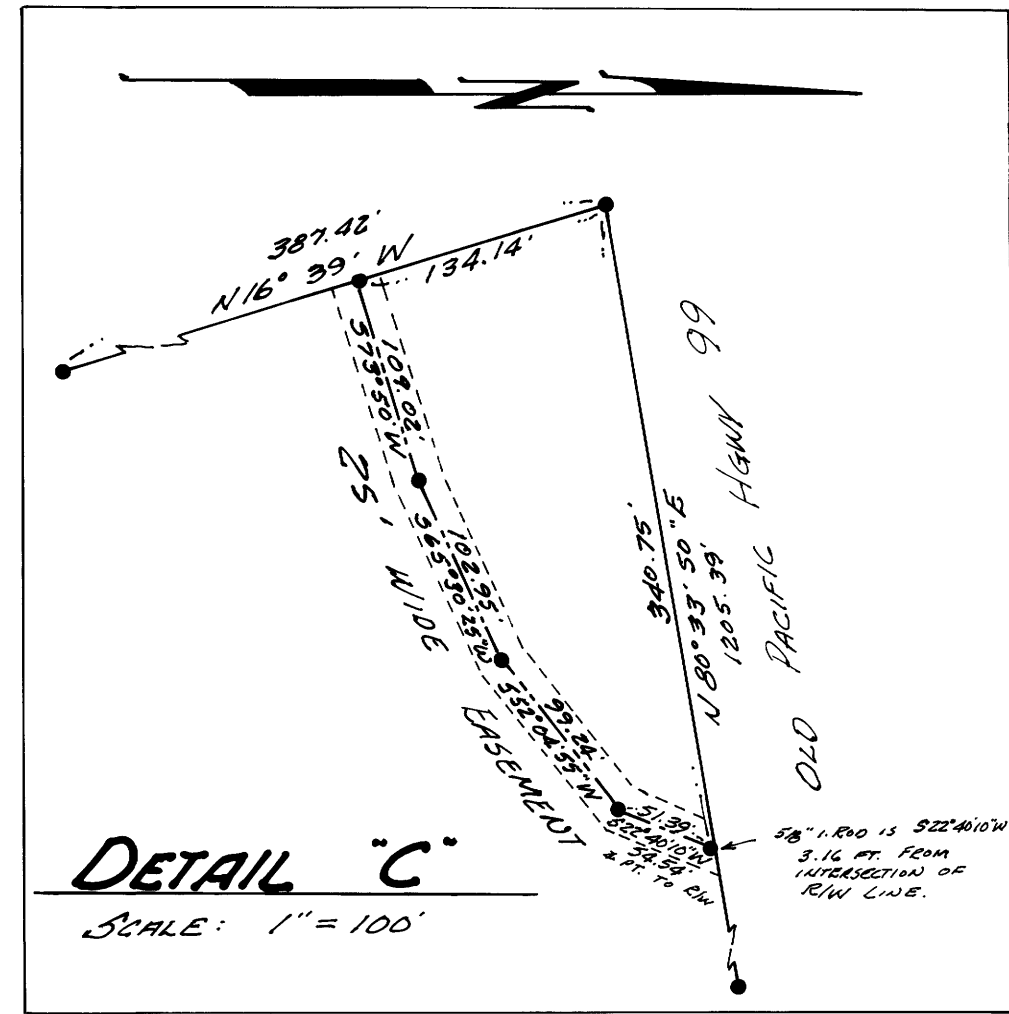
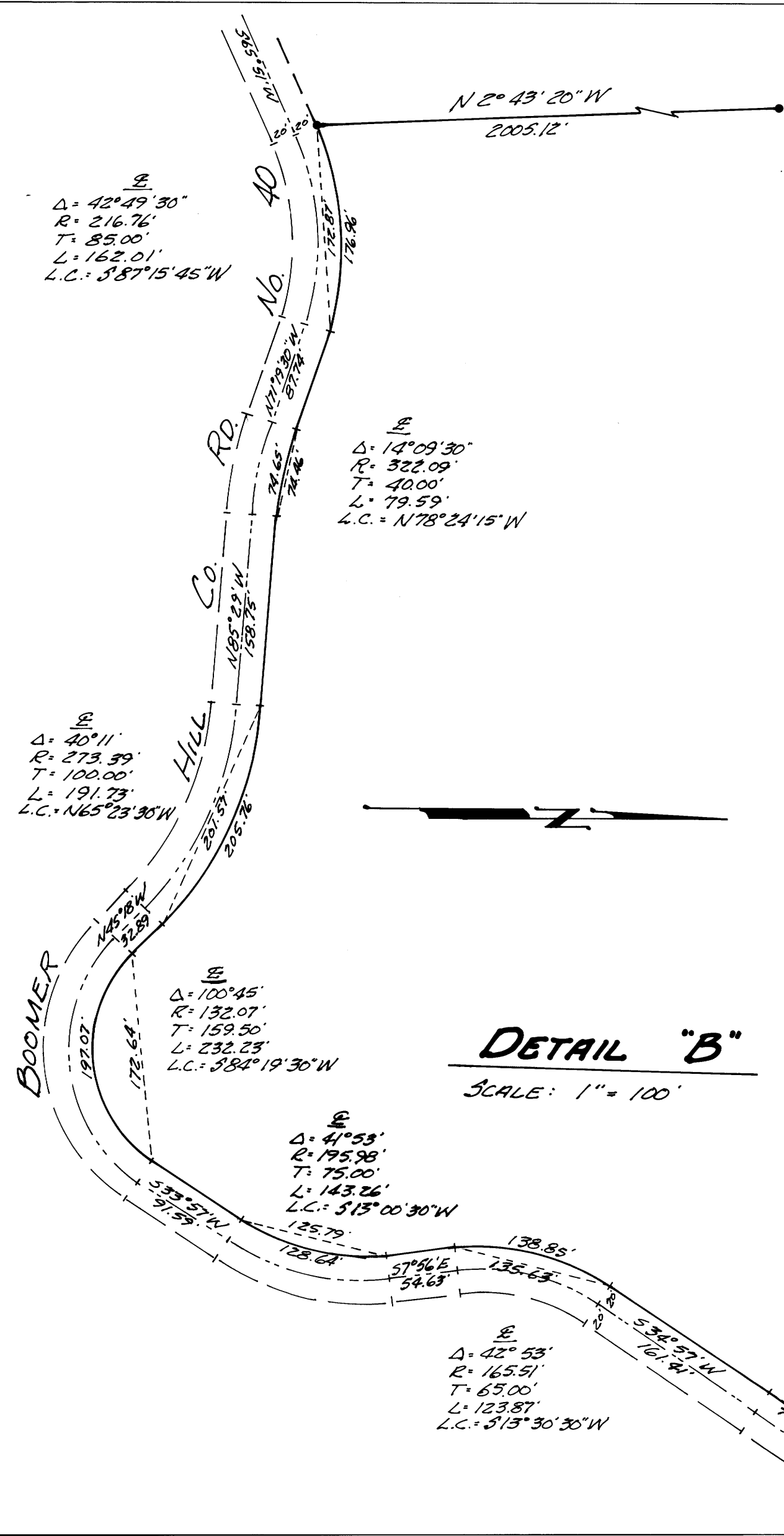
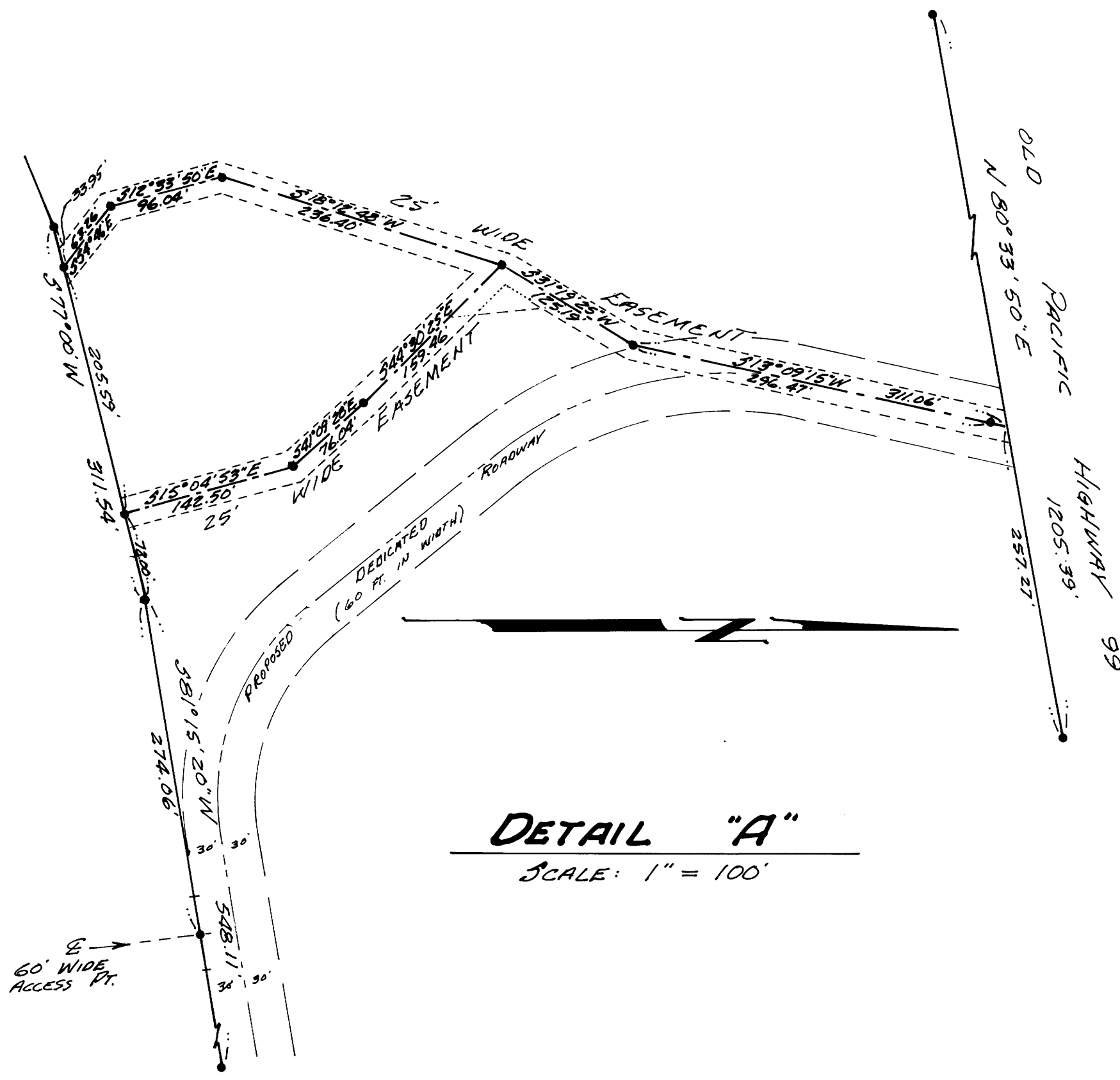
SURVEY FOR OTIS CLAYTON
SURVEY BY BHW ENG. & SURVEYING, INC.
DEC., 1977 SCALE: 1"=400'

- — FD. STATE HIGHWAY R/W MONUMENT
- SET 5/8" I. ROD

BEARINGS ARE ROTATED TRUE FROM THE INTERSTATE
I, FREEWAY (PARTIAL-WAY) OF WHICH IS BASED UPON THE OREGON
STATE PLANE COORDINATE GRID SYSTEM - SOUTH ZONE - S*11°55'50".

REGISTERED
PROFESSIONAL
LAND SURVEYOR

Romano E. Ware
OREGON
NOV 18 1977
ROMANSO E WARE
1005



COUNTY SURVEYORS FILE ONLY
DO NOT REMOVE FROM OFFICE