

COUNTY SURVEYORS FILE DATA
DO NOT REMOVE FROM OFFICE

SURVEY IN SECTION 27 & 34, T22S, R5W, W.M.

SURVEY FOR NICK BOTNER
SURVEY BY BHW ENG. & SURVEYING
DEC., 1977 SCALE: 1" = 100'

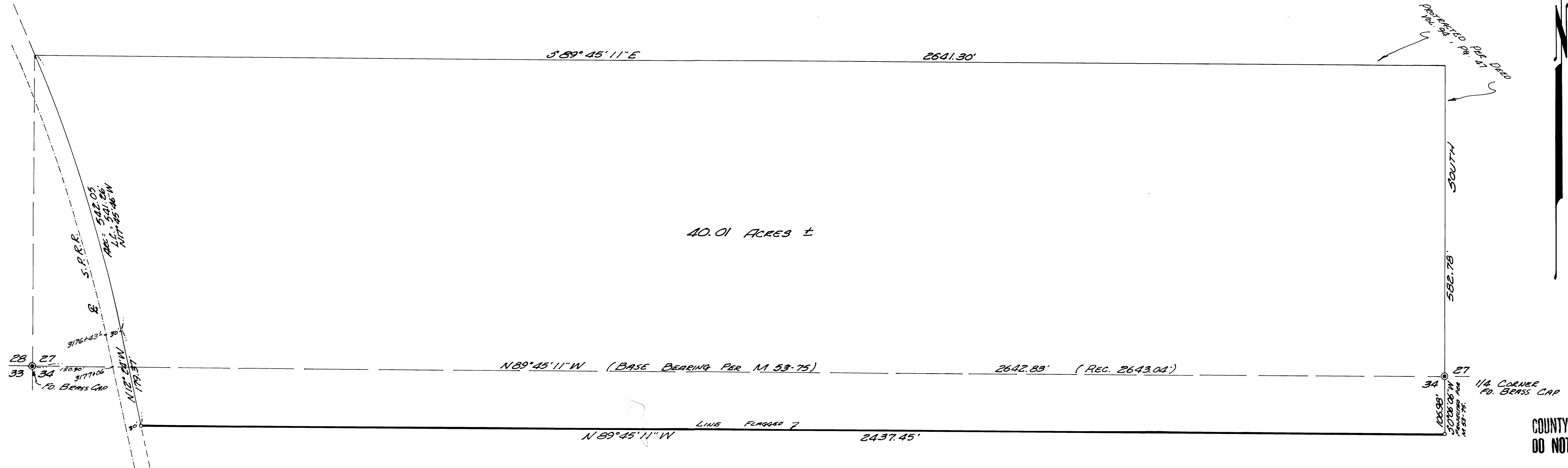
- — SET 5/8" IRON ROD
- — FD. BRASS CAP

REGISTERED
PROFESSIONAL
LAND SURVEYOR

Romano E. Ware

OREGON
NOV. 18, 1873
ROMANSO E. WARE
1005

FILE 2
RECORDED 2
1981013
COUNTY SURVEYOR
DOUGLAS COUNTY, ORE.



COUNTY SURVEYORS FILE DATA
DO NOT REMOVE FROM OFFICE