

FILED
RECEIVED *dh*
OCT 6 1977
COUNTY SURVEYOR
DOUGLAS COUNTY, ORE.
7

SURVEY IN SECTION 34, T32S., R5W., W.M.

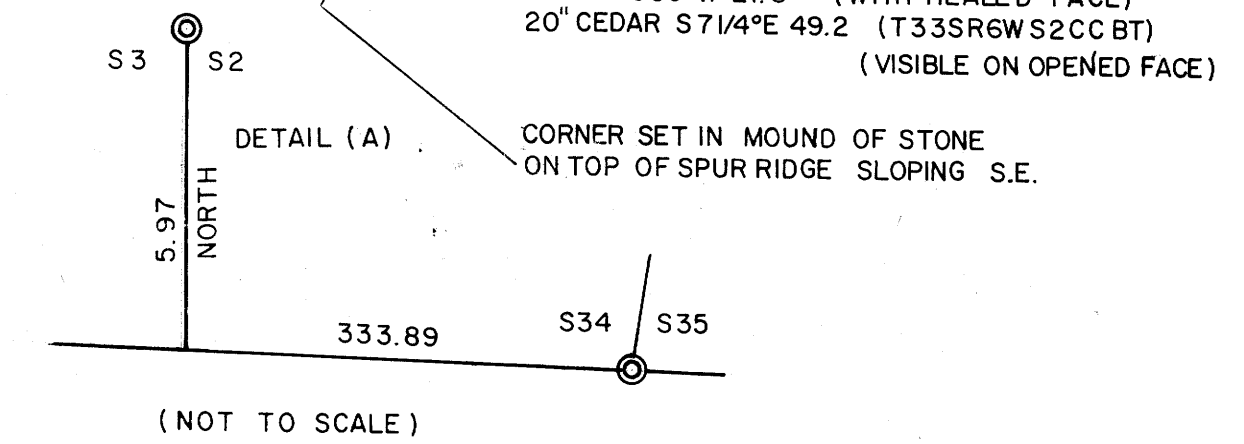
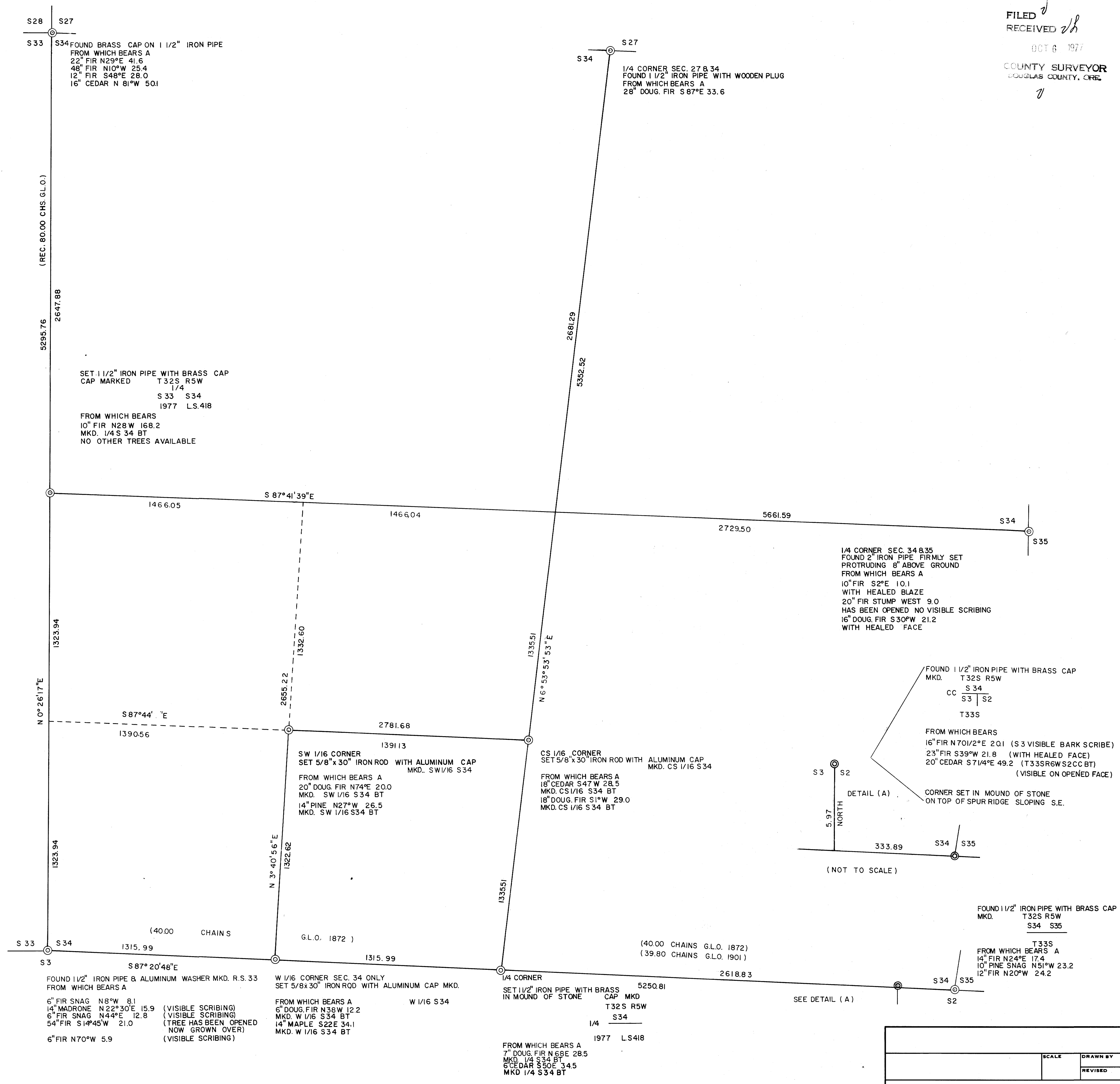
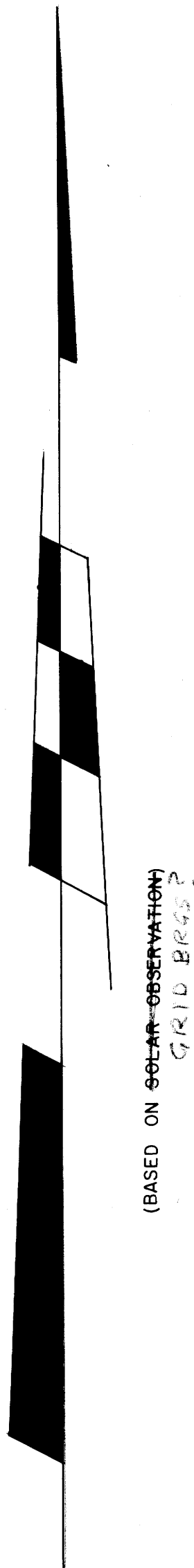
FOR: SUN STUDS INC.

BY: BURTON W. HOLT

AUGUST 1977

SCALE 1" = 300'

REGISTERED
PROFESSIONAL
LAND SURVEYOR
Burton W. Holt
OREGON
REGISTERED & LICENSED
BURTON W. HOLT
418



DATE		APPROVED BY		DRAWING NUMBER	