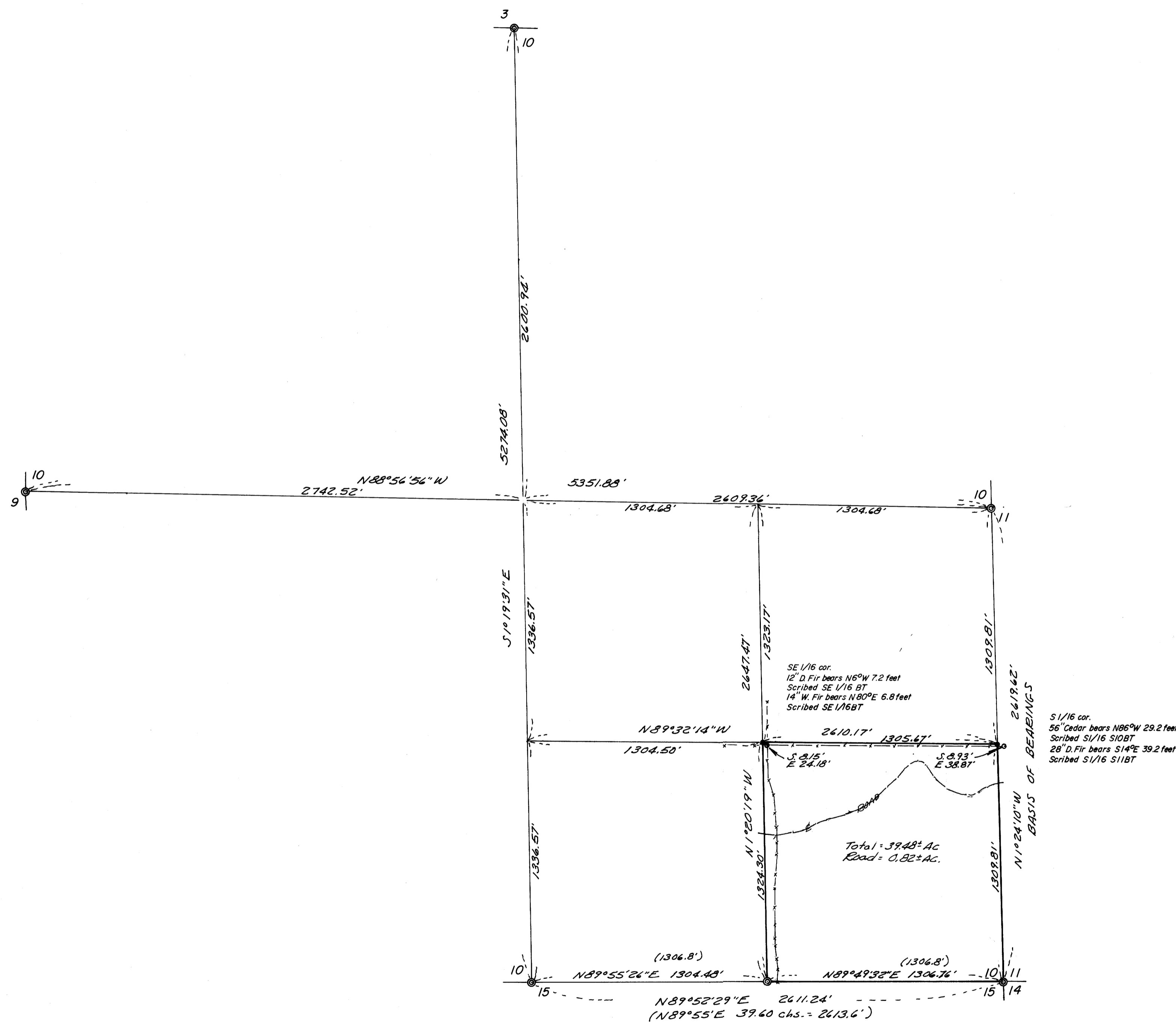


COUNTY SURVEYORS FILE DATA
DO NOT REMOVE FROM OFFICE

FILED
RECEIVED
SEP 26 1977
COUNTY SURVEYOR
DOUGLAS COUNTY, ORE



LEGEND

- Found 1 1/2" iron pipe per Vol. 3, P. 166
- Set 5/8" iron rod
- ⊙ Found brass cap
- Fence

Based on RM 2-69

COUNTY SURVEYORS FILE DATA
DO NOT REMOVE FROM OFFICE

REGISTERED
PROFESSIONAL
LAND SURVEYOR

Glenn S. Baughman

OREGON
JULY 14, 1961
GLENN S. BAUGHMAN
536

SURVEY OF SE 1/4 SE 1/4 SECTION 10, T.26S. R.3W.W.M.			
FOR: WEYERHAEUSER COMPANY	SCALE 1" = 400'	DRAWN BY Edb	REVISOR
C & G ENGINEERING INC., ROSEBURG, OREGON			
DATE 9/9/77	APPROVED BY	DRAWING NUMBER 6149.0080	