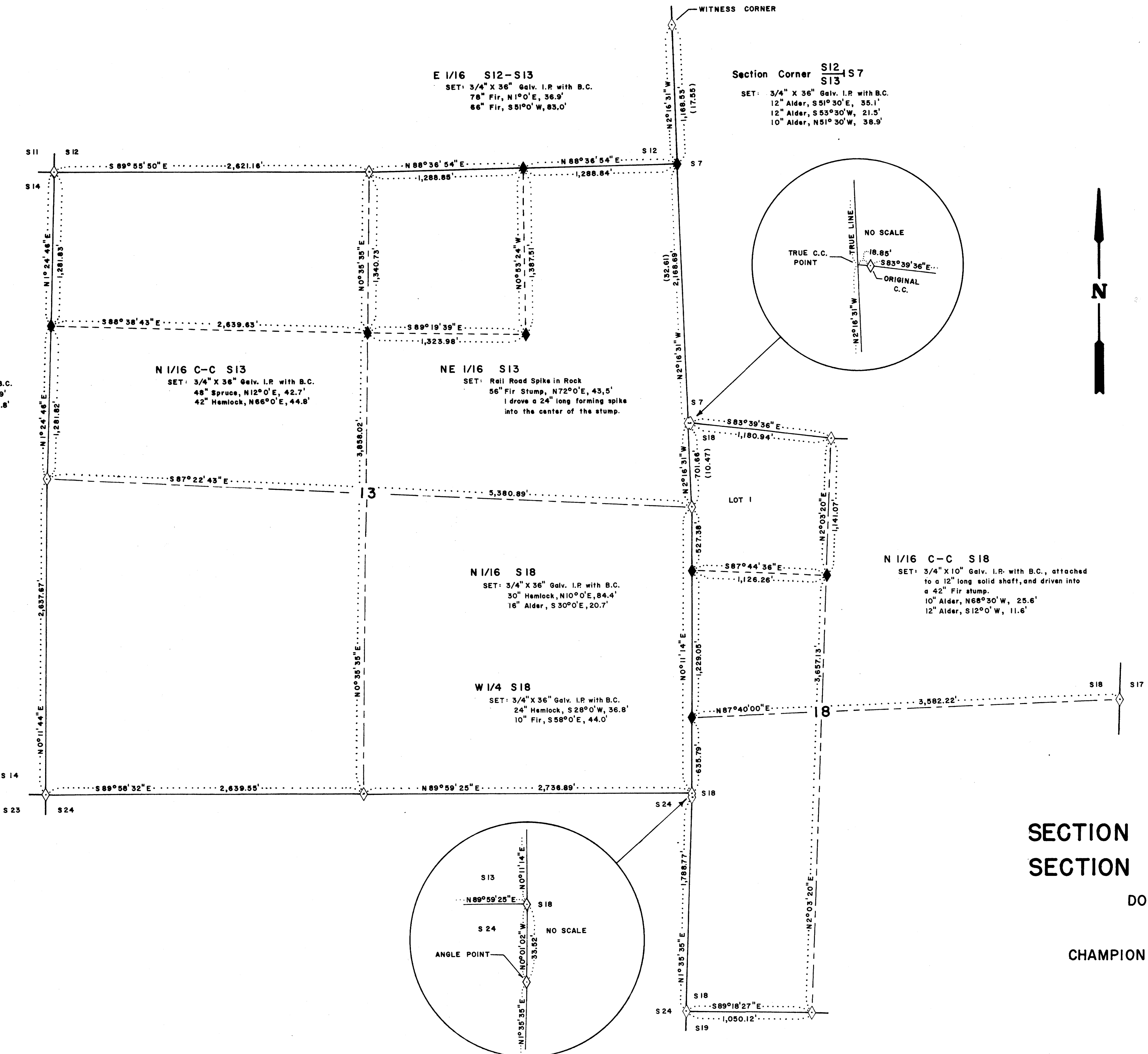


FILED
RECEIVED
MAR 8 1977
COUNTY SURVEYOR
DOUGLAS COUNTY, OREG.
MC



LEGEND:

- ◊ Corner found and used for control (Refer to corner restoration notes submitted with this survey)
- ◆ Corner set this survey
- B.C. Brass Cap — 3" dia. — stamped
- () Recorded original distance in chains

SCALE: 1" = 500'

BASIS OF BEARING:
Solar observation taken along Scholfield Creek road near west side of section 13, on November 8, 1976
This survey was performed with a Dietzgen transit, 200' steel tape, and E.M.D.

NOTE:
All bearings and distances to bearing trees are to the center of the tree at the root crown
All bearing trees are scribed

REGISTERED
PROFESSIONAL
LAND SURVEYOR
Robert B. Ward, Jr.
OREGON
ROBERT B. WARD, JR.
JULY 31, 1976

SURVEY OF
SECTION 13, T.22S., R.12W., &
SECTION 18, T.22S., R.11W., W.M.
DOUGLAS COUNTY, OREGON
FOR
CHAMPION INTERNATIONAL CORPORATION
DECEMBER 1976

CORNER RESTORATION NOTES for survey of section 13, T.22 S., R.12 W., and section 18, T.22 S., R.11 W., W.M., for Champion International Corporation.

S 11 | S 12
 S 14 | S 13

North West Corner of Section 13

Found:

3/4" iron pipe set for corner by Clifford A. Stephens in 1965.

A 50" Fir stump bears N79*00'W, 39.0'

A 40" Fir stump bears S62*30'W, 19.4'

Note; I recommend that the County remonument this corner.

S 14 | S 13

West 1/4 of Section 13

Found:

I found a cedar post set by Clifford A. Stephens in 1965

I found one original bearing tree, now a stump

A 40" Fir stump bears N62*00'W, 23.1'

The Hemlock is gone

From the above mentioned bearing tree, I set a 3/4" X 36" galv. iron pipe with brass cap.

A 14" Hemlock bears N35*00'W, 19.4'

A 6" Hemlock bears N50*30'E, 39.6'

I replaced the post set by Stephens with a 4"X4"X6' cedar post. This post bears S72*00'E, 2.2' from my brass cap iron pipe.

S 14 | S 13
 S 23 | S 24

South West Section Corner of Section 13

Found:

I found 3/4" copper pipe set as corner by Clifford A. Stephens in 1966

A 14" Alder bears N28*00'E, 22.3'

A 10" Spruce bears N59*00'W, 38.5'

A 18" Alder bears S 5*00'W, 34.2'

S 13
—◇—
S 24

South 1/4 Corner of Section 13

Found:

I found Oregon State Board of Forestry brass cap, iron pipe set in 1971

- A 11" Alder bears S24*00'W, 41.0'
- A 37" Hemlock bears N15*00'E, 13.5'

S 13 |
—◇— | S 18
S 24 |

South East Corner of Section 13

Found:

I found Oregon State Board of Forestry brass cap, iron pipe set in 1971

- A 6" Alder bears N45*15'W, 20.2'
- A 4" Alder bears S58*00'W, 19.9'

S 13 |
—◇— |
S 13 |

East 1/4 Corner of Section 13 (S-13 only)

Found:

I found Oregon State Board of Forestry brass cap, iron pipe set in 1970

- A 45" Fir (now stump) bears N49*30'W, 55.7' (measured to face)
- A 37" Fir (now stump) bears S49*00'W, 85.5' (measured to face)

S 12
—◇—
S 13

North 1/4 Corner of Section 13

Found:

I found cedar post set by Clifford A. Stephens in 1965

I found two original bearing trees, now stumps

- A 50" Fir stump bears S61*30'W, 72.6'
- A 50" Fir stump bears N86*00'W, 31.6'

From the above mentioned bearing trees, I set a 3/4" X 36" galv. iron pipe with brass cap.

- A 20" Alder bears S22*00'E, 22.2'
- A 18" Cedar bears N61*00'W, 51.6'
- (this is cedar set by Stephens, bearing and distance are to my brass cap)

The cedar post set by Stephens bears N29*00'E, 3.1' from my brass cap

S 12 | S 7

Witness Corner between Section 12, T.22 S., R.12 W., and Section 7, T.22 S., R.11 W., W.M.

Found:

I found a 1" X 1" X 24" T - iron about 12" in center of the stump for the witness corner

I found a 1/2" X 16" bolt in the center of a 42" Fir stump which bears N21*00'W, 23.6' from the witness corner

I found a 1/2" X 5" lag screw in the center of a 54" Fir stump which bears N72*00'W, 34.6' from the witness corner

S 13 | S 7
S 18

Closing Corner for Section 7, and Section 18 of T.22 S., R.11 W., W.M.

Found:

I found original bearing trees of latest Government Survey

A 60" Fir (now a stump) bears N31*30'E, 31.7'

A 72" Fir (now a stump) bears S65*00'E, 38.9'

Note; I will set a brass cap at this corner after logging is finished.

S 13 | S 18
S 24

Angle Point between Section 24, T.22 S., R.12 W., and Section 18, T.22 S., R.11 W., W.M.. This point being 33.52' south of the section corner common to section 13, and section 24, of T.22 S., R.12 W., W.M.

Found:

I found Oregon State Board of Forestry brass cap, iron pipe set in 1971

A 9" Alder bears S89*45'W, 14.2'

A 11" Cedar bears S29*30'W, 50.8'

S 24 | S 18
S 19

Closing Corner for Section 18, and Section 19, T.22 S., R.11 W., W.M.

Found:

I found Oregon State Board of Forestry brass cap, iron pipe set in 1961

A 23" Fir bears S 9*00'E, 11.5'

A 31" Fir bears N88*00'W, 10.5' (now stump)

A 50" Fir bears N60*00'W, 15.8' (now stump)

The 42" Fir, and 10" Spruce are gone

S 18
—◇—
S 19

South 1/4 Corner of Section 18

Found:

I found Oregon State Board of Forestry brass cap, iron pipe set in 1961

A 18" Hemlock (now stump) bears S25*00'E, 16.3'

A 26" Hemlock (now blow down) bears N67*00'E, 40.5'

S 18 | ◇ | S 17

East 1/4 Corner of Section 18

Found:

I found Oregon State Board of Forestry brass cap, iron pipe set in 1973

A 66" Fir bears N38*00'E, 104.5'

A 4' X 6' sandstone marked with a 9" X, bears S38*00'W, 17.7'

S 7
—◇—
S 18

North 1/4 corner of Section 18

Found:

I found a brass cap, iron pipe set by Dennis A. Crowe (P.L.S.845)
The brass cap, iron pipe is at the correct location

A 24" Fir (now blow down) bears S 5*00'E, 25.3'

A 16" Cherry (now a snag) bears N31*00'E, 45.0'

A 11" ~~Alder~~ ^{Myrtle Wood} bears S25*00'E, 20.0' (this bearing tree was established by Crowe)

Robert B. Ward Jr
Forest Engineer, P.L.S.
Champion International Corporation
Feb. 24, 1977

REGISTERED
PROFESSIONAL
LAND SURVEYOR

Robert B. Ward Jr.

OREGON
ROBERT B. WARD, JR.
JULY 30, 1976
1091



Champion Timberlands
P.O. Box 100
Maple Valley, Oregon 97139
Telephone (503) 637-4412

March 7, 1977

Surveyors Office
Douglas County Court House
Roseburg, Oregon 97470

Enclosed you will find a map representing the survey I have completed for Champion Timberlands, a division of Champion International. I have also included a copy of my corner restoration and visitation notes. Please file this information in your office.

Thank You,

A handwritten signature in cursive script that reads 'Robert B. Ward Jr.'.

Robert B. Ward Jr.
Forest Engineer, P.L.S.

RBW:ss
Enclos.

CS 58/139-4E