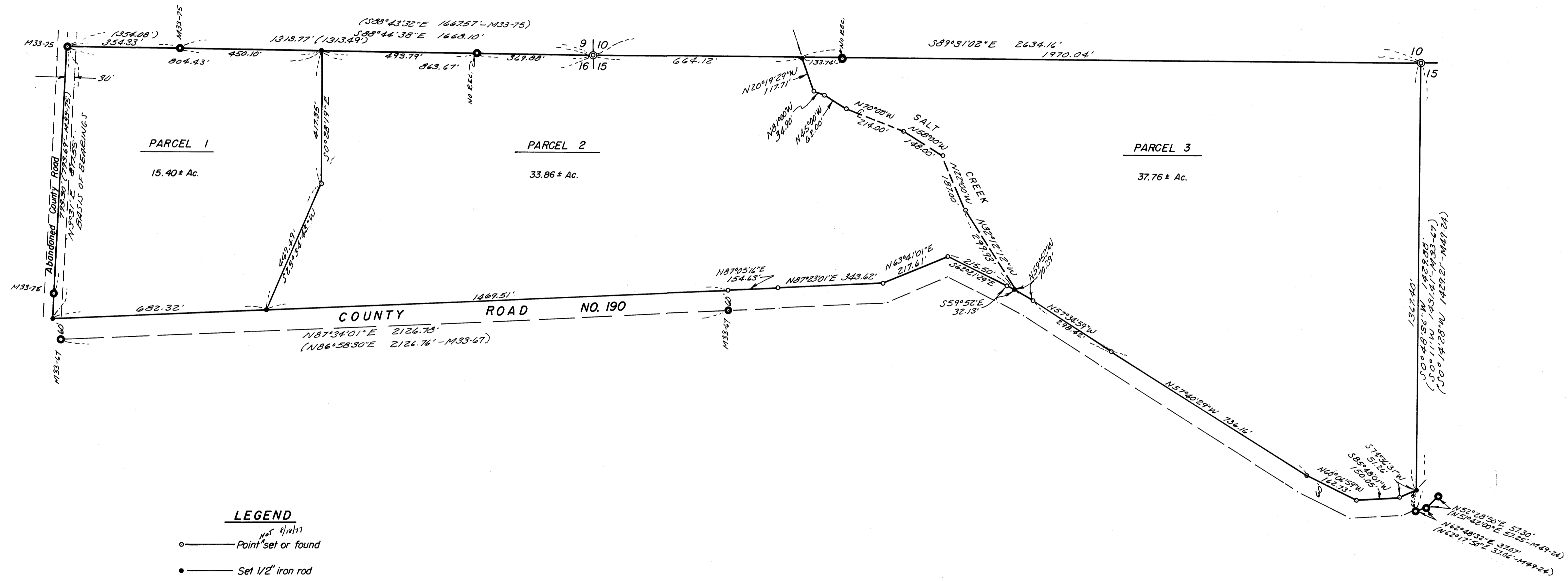


COUNTY SURVEYORS FILE DATA  
DO NOT REMOVE FROM OFFICE

FILED ✓  
RECEIVED M.L.C.  
AUG 15 1977  
COUNTY SURVEYOR  
DOUGLAS COUNTY, ORE.  
✓

BASED ON M33-75



- LEGEND**
- — Point set or found
  - — Set 1/2" iron rod
  - — Found 5/8" iron rod
  - ⊙ — Found Brass cap

COUNTY SURVEYORS FILE DATA  
DO NOT REMOVE FROM OFFICE

REGISTERED  
PROFESSIONAL  
LAND SURVEYOR  
*Glenn S. Burdman*  
OREGON  
JULY 14 1964  
GLENN S. BURDMAN  
S 30

SURVEY FOR DESCRIPTION in SECTIONS 15 & 16, T.24S. R.5W.W.M.			
FOR: EVERETT BROWN	SCALE 1"=200'	DRAWN BY Eab	REVISED
C & G ENGINEERING INC.,—ROSEBURG, OREGON			
DATE JULY 1977	APPROVED BY	DRAWING NUMBER 6150.0031	