

COUNTY SURVEYORS FILE DATA
DO NOT REMOVE FROM OFFICE

SURVEY IN SECTION 24, T.30S., R.2W., W.M.

FOR: SUN STUDS INC.

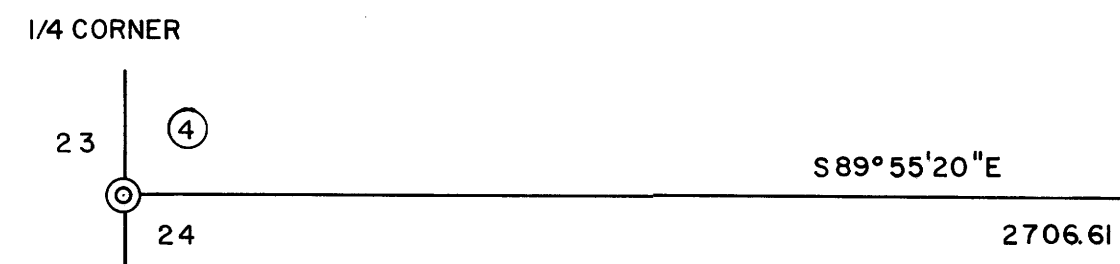
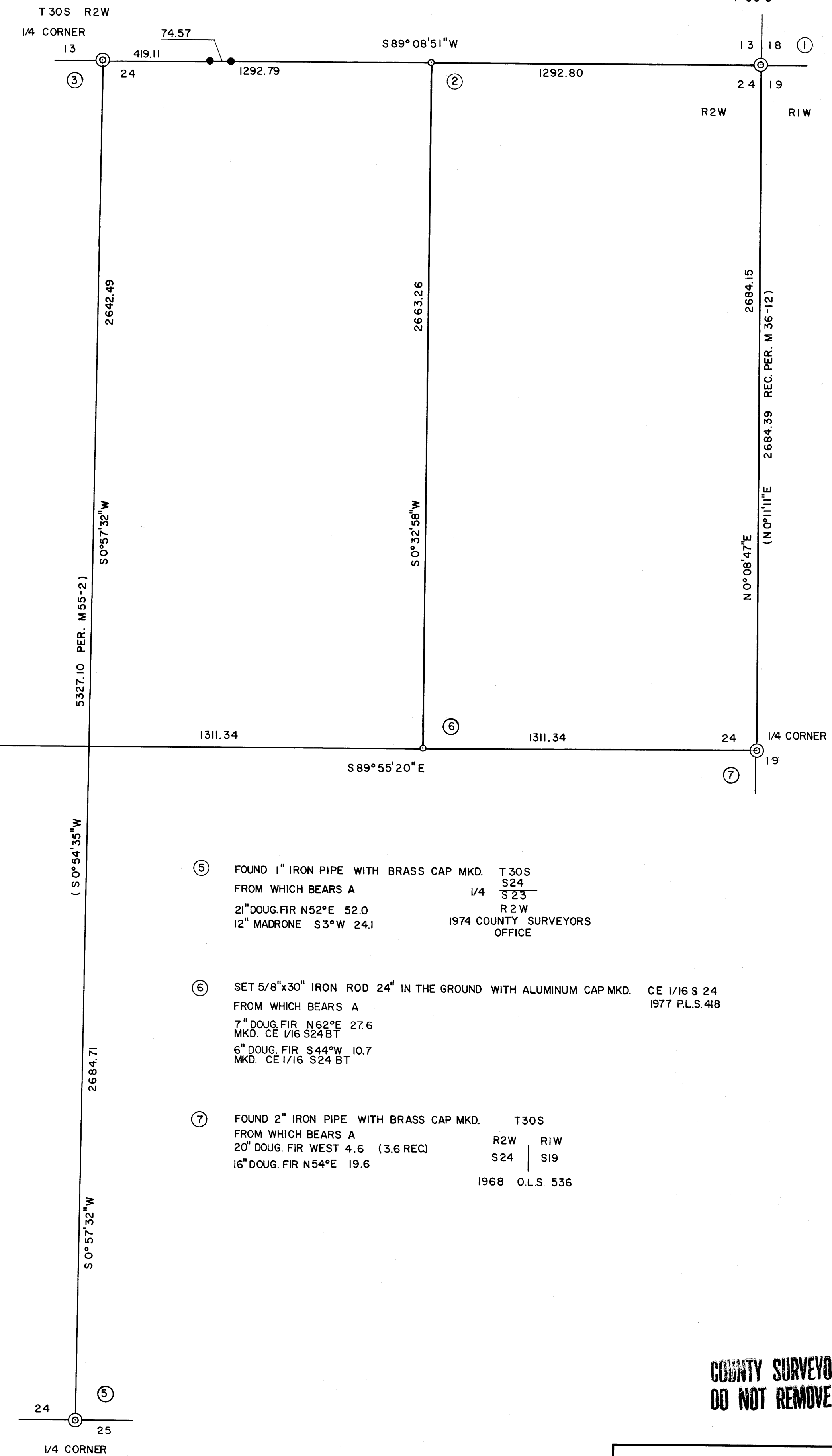
BY: BURTON W. HOLT

JULY 1977

SCALE 1" = 300'

REGISTERED
PROFESSIONAL
LAND SURVEYOR
Burton W. Holt
OREGON
REGISTERED
BURTON W. HOLT
418

FILED
RECEIVED
AUG 1 1977
COUNTY SURVEYOR
DOUGLAS COUNTY, OREGON



- ① FOUND BRASS CAP ON 1 1/2" IRON PIPE & 6"x8"x18" STONE ALONG SIDE PIPE
FROM WHICH BEARS A
8" DOUG. FIR STOB. S 14° E 7.9
20" DOUG. FIR S 53° 30' E 14.8
18" DOUG. FIR S 79° W 19.4
24" DOUG. FIR. N 56° E 20.0
24" DOUG. FIR. N 62° W 48.2
- ② SET 5/8"x30" IRON ROD 24" IN THE GROUND WITH ALUMINUM CAP-MKD. E 1/16 S 13
FROM WHICH BEARS A S 24
MKD. E 1/16 S 13 BT 1977 PLS. 418
12" DOUG. FIR N 16° E 23.9
12" DOUG. FIR S 56° E 24.4
MKD. E 1/16 S 24 BT
- ③ FOUND 1" IRON PIPE WITH BRASS CAP MKD. T 30S
FROM WHICH BEARS A 1/4 S 13
28" DOUG. FIR N 40° E 6.7 R 2W
40" DOUG. FIR S 10° E 41.0
- ④ FOUND 2 1/2" IRON PIPE WITH BRASS CAP MKD. 1/4
FROM WHICH BEARS A S 23 S 24
20" PINE N 71° 30' E 86.6 1963
15" CEDAR S 6° 45' W 20.0

- ⑤ FOUND 1" IRON PIPE WITH BRASS CAP MKD. T 30S
FROM WHICH BEARS A 1/4 S 24
21" DOUG. FIR N 52° E 52.0 R 2W
12" MADRONE S 3° W 24.1 1974 COUNTY SURVEYORS
OFFICE
- ⑥ SET 5/8"x30" IRON ROD 24" IN THE GROUND WITH ALUMINUM CAP MKD. CE 1/16 S 24
FROM WHICH BEARS A 1977 PLS. 418
7" DOUG. FIR N 62° E 27.6
MKD. CE 1/16 S 24 BT
6" DOUG. FIR S 44° W 10.7
MKD. CE 1/16 S 24 BT
- ⑦ FOUND 2" IRON PIPE WITH BRASS CAP MKD. T 30S
FROM WHICH BEARS A R 2W R 1W
20" DOUG. FIR WEST 4.6 (3.6 REC) S 24 S 19
16" DOUG. FIR N 54° E 19.6
1968 O.L.S. 536

● FOUND 5/8" IRON ROD ON SECTION LINE (PER. M55-2)

BASED ON NORTH LINE SEC. 24, T.30S. R.2W.
(PER. M55-2)

COUNTY SURVEYORS FILE DATA
DO NOT REMOVE FROM OFFICE

DATE		APPROVED BY		DRAWING NUMBER	
				BMH 7205	
SCALE		DRAWN BY		REVISED	