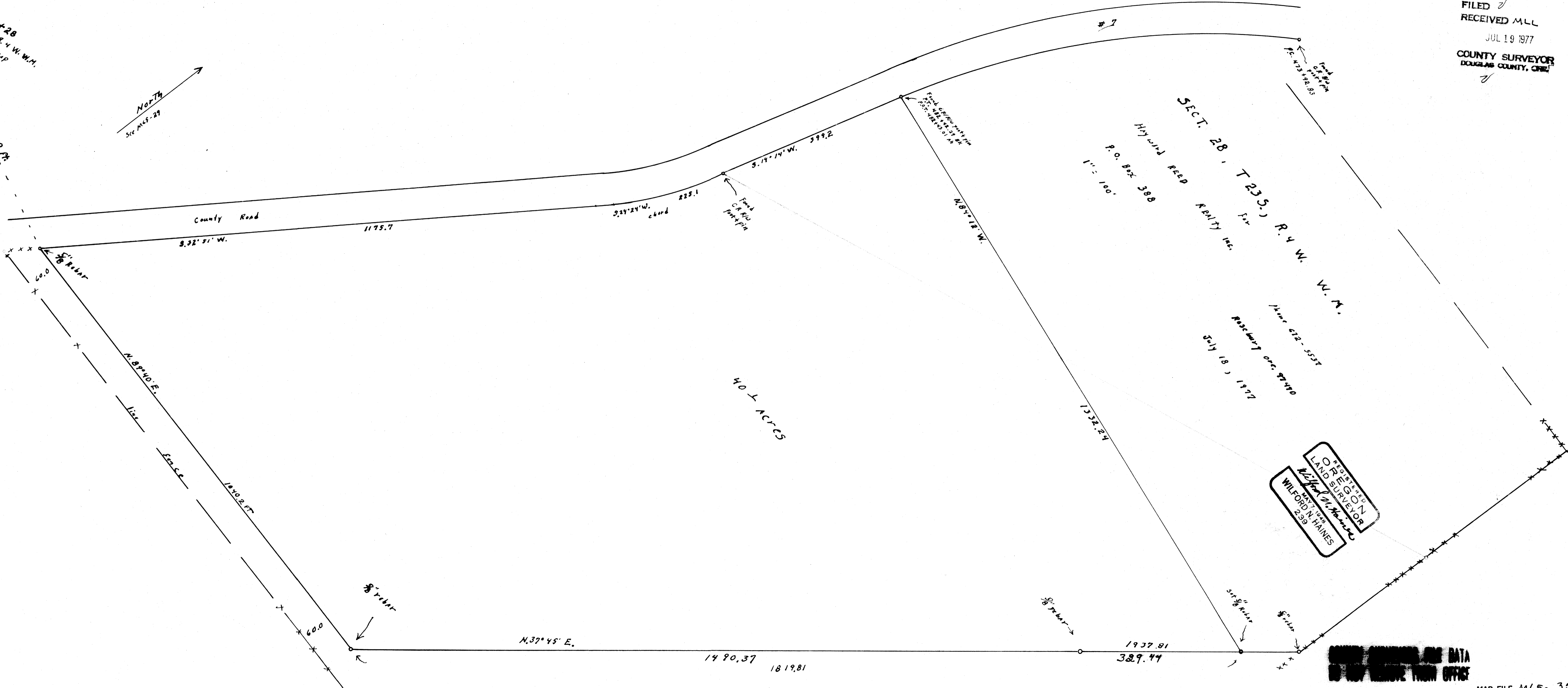
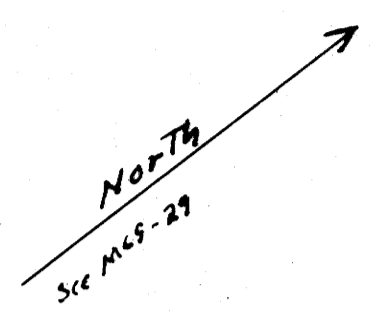


COUNTY SURVEYOR'S OFFICE
DO NOT REMOVE FROM OFFICE

FILED
RECEIVED MLL
JUL 19 1977
COUNTY SURVEYOR
DOUGLAS COUNTY, ORE

MAP FILE M65-35...

T. 23 S., R. 4 W. W.M.
County Basis CAP



SECT. 28, T. 23 S., R. 4 W. W.M.
Hwy Wind REED REALTY INC.
P.O. Box 388
June 612-5537
Roseburg Ore. 97470
July 18, 1977

40 ACRES

REGISTERED
LAND SURVEYOR
WILFORD N. HAINES
2339

DO NOT REMOVE FROM OFFICE

MAP FILE M65-35...