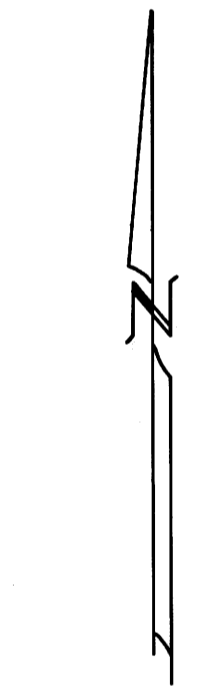
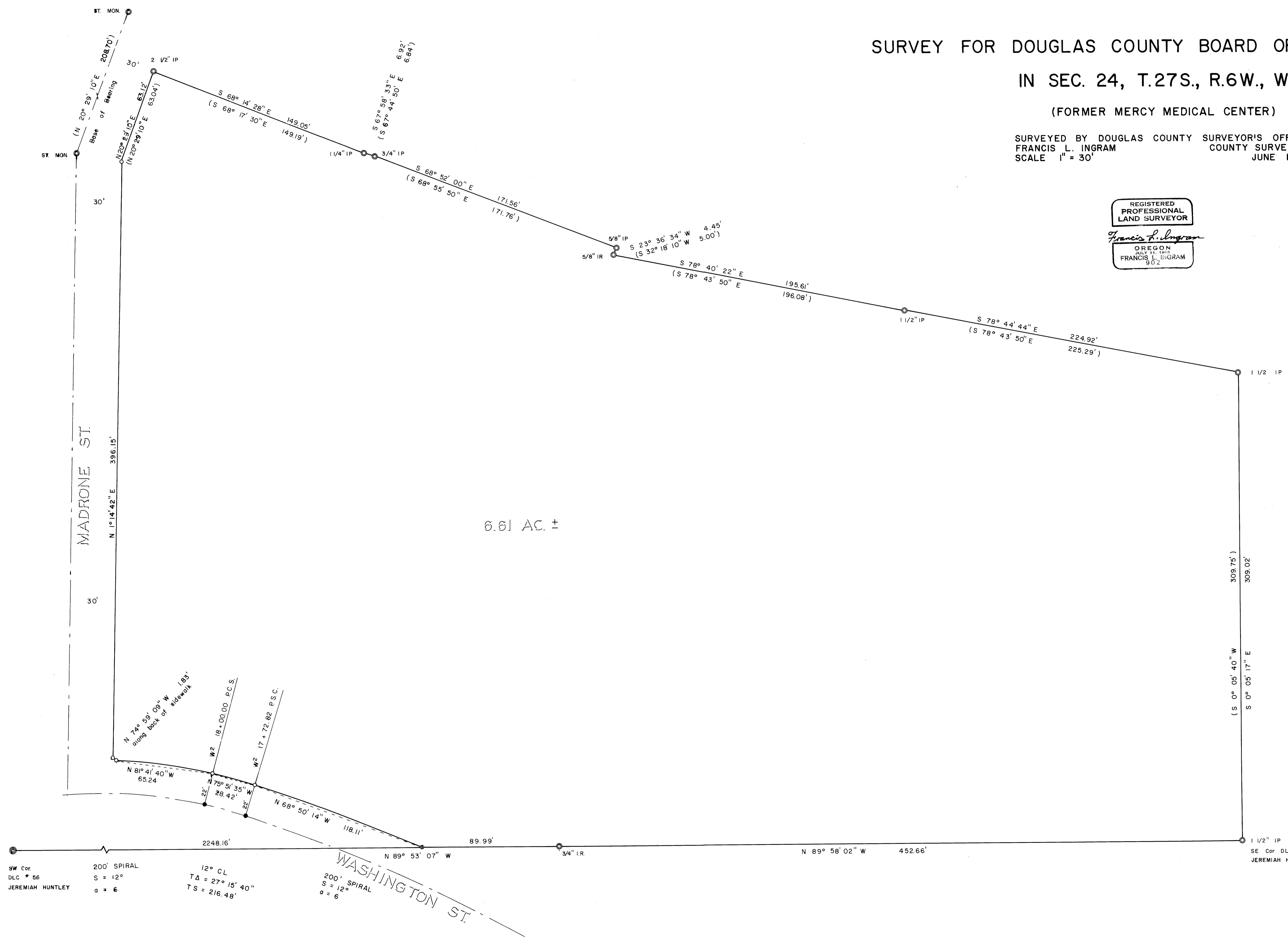


SURVEY FOR DOUGLAS COUNTY BOARD OF COMMISSIONERS  
 IN SEC. 24, T.27S., R.6W., W.M.  
 (FORMER MERCY MEDICAL CENTER)

SURVEYED BY DOUGLAS COUNTY SURVEYOR'S OFFICE  
 FRANCIS L. INGRAM COUNTY SURVEYOR  
 SCALE 1" = 30'

REGISTERED PROFESSIONAL LAND SURVEYOR  
*Francis L. Ingram*  
 OREGON  
 JULY 11, 1959  
 FRANCIS L. INGRAM  
 902



1" = 0.3048006 METERS

Bearings Based on  
 R.M. 2-12

LEGEND

- COMPUTED, NOT SET
- SET 5/8" I.R.
- ⊗ CHISELED "X"
- ⊙ FD. MON. AS NOTED
- ⊕ FD. BRASS CAP
- ( ) RECORD FROM R.M. 2-12

SW Cor.  
 DLC # 56  
 JEREMIAH HUNTLEY

200' SPIRAL  
 $S = 12^{\circ}$   
 $\Delta = 6$

12° CL  
 $T\Delta = 27^{\circ} 15' 40''$   
 $T S = 216.48'$

200' SPIRAL  
 $S = 12^{\circ}$   
 $\Delta = 6$

SE Cor. DLC # 56  
 JEREMIAH HUNTLEY

CS FILE FOLDER

CONTAINS

MORE

INFORMATION