

COUNTY SURVEYORS FILE DATA
DO NOT REMOVE FROM OFFICE

SECT. 28, T.23S., R.4W. W.M.

For

HOWARD REED REALTY INC.

P.O. Box 388

Roseburg, Ore. 97470

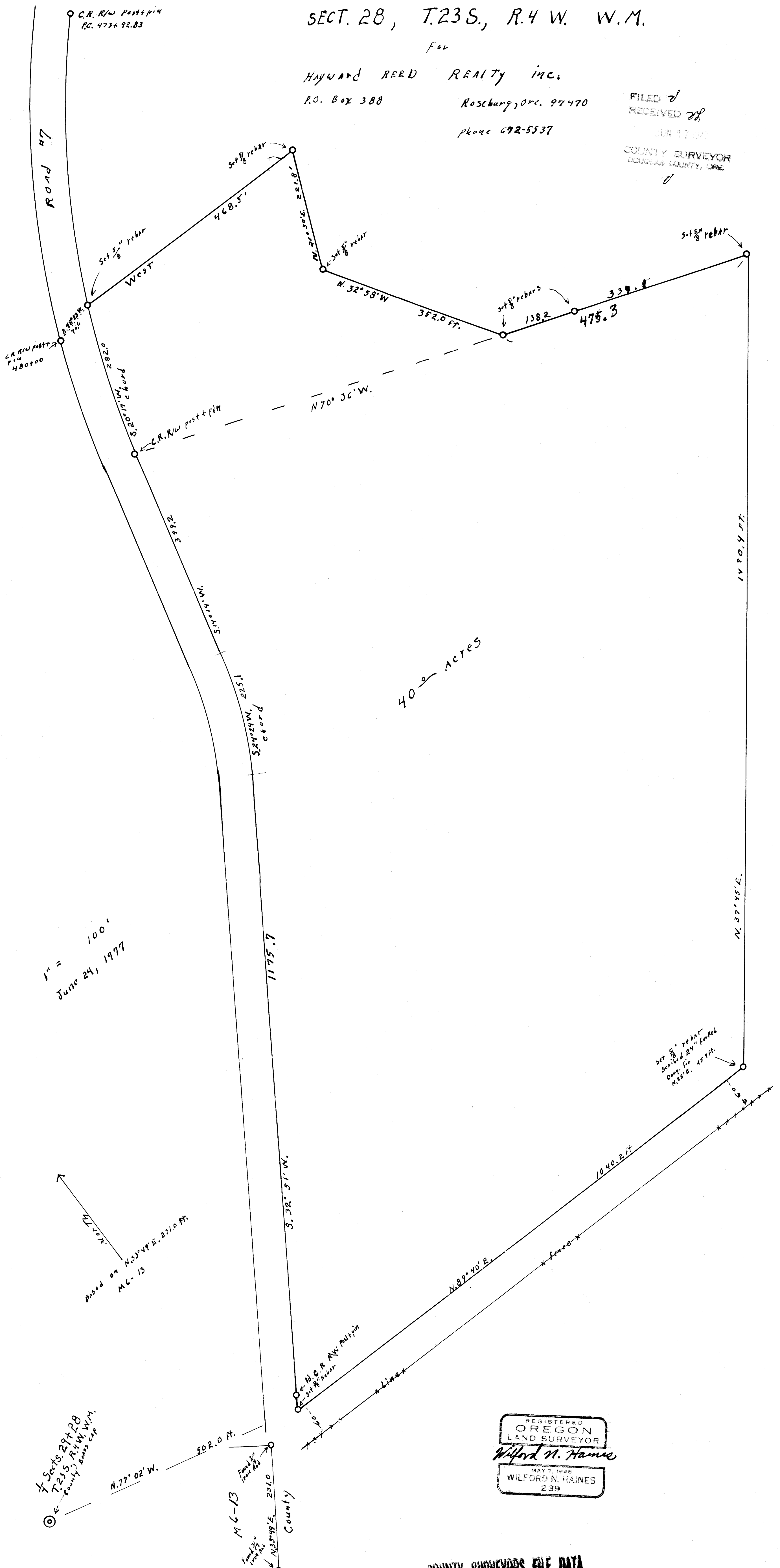
phone 692-5537

FILED &
RECEIVED 28

JUN 27 1977

COUNTY SURVEYOR
DOUGLAS COUNTY, ORE.

MAP FILE M-65-28



40 ± ACRES

1" = 100'
June 24, 1977

Based on N 33° 49' E, 231.0 FT.
M.C. 13

7 Sects. 29+28
T.23S., R.4W. W.M.
County Basis Cap

M.C. 13
Found by
Iron nail
N 33° 49' E, 231.0
County

REGISTERED
OREGON
LAND SURVEYOR
Wilford N. Haines
MAY 7, 1948
WILFORD N. HAINES
239

COUNTY SURVEYORS FILE DATA
DO NOT REMOVE FROM OFFICE

MAP FILE M-65-28