

COUNTY SURVEYORS FILE DATA
DO NOT REMOVE FROM OFFICE

Subdivision of Section 6, T30S, R6W, W.M.

Roseburg Lumber Company

June 6, 1977

Scale 1" = 300'

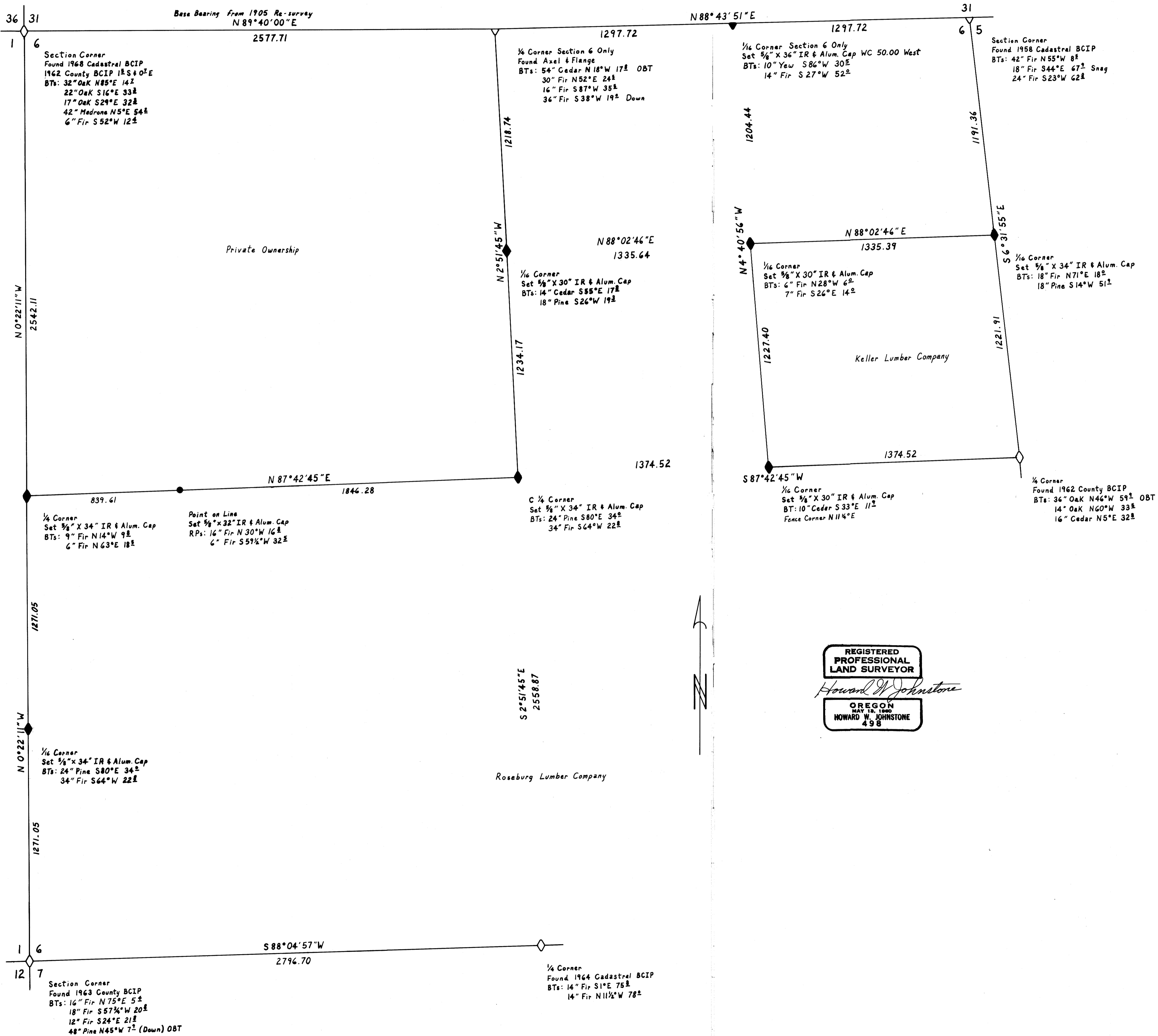
Corner Found \diamond

Corner Set \blacklozenge

FILED
RECEIVED

JUN 16 1977

COUNTY SURVEYOR
DOUGLAS COUNTY, ORE.



REGISTERED
PROFESSIONAL
LAND SURVEYOR

Howard W. Johnstone

OREGON
MAY 18, 1960
HOWARD W. JOHNSTONE
498

COUNTY SURVEYORS FILE DATA
DO NOT REMOVE FROM OFFICE