

COUNTY SURVEYORS FILE DATA
DO NOT REMOVE FROM OFFICE

FILED
RECEIVED
JUN 15 1977
COUNTY SURVEYOR
DOUGLAS COUNTY, ORE.

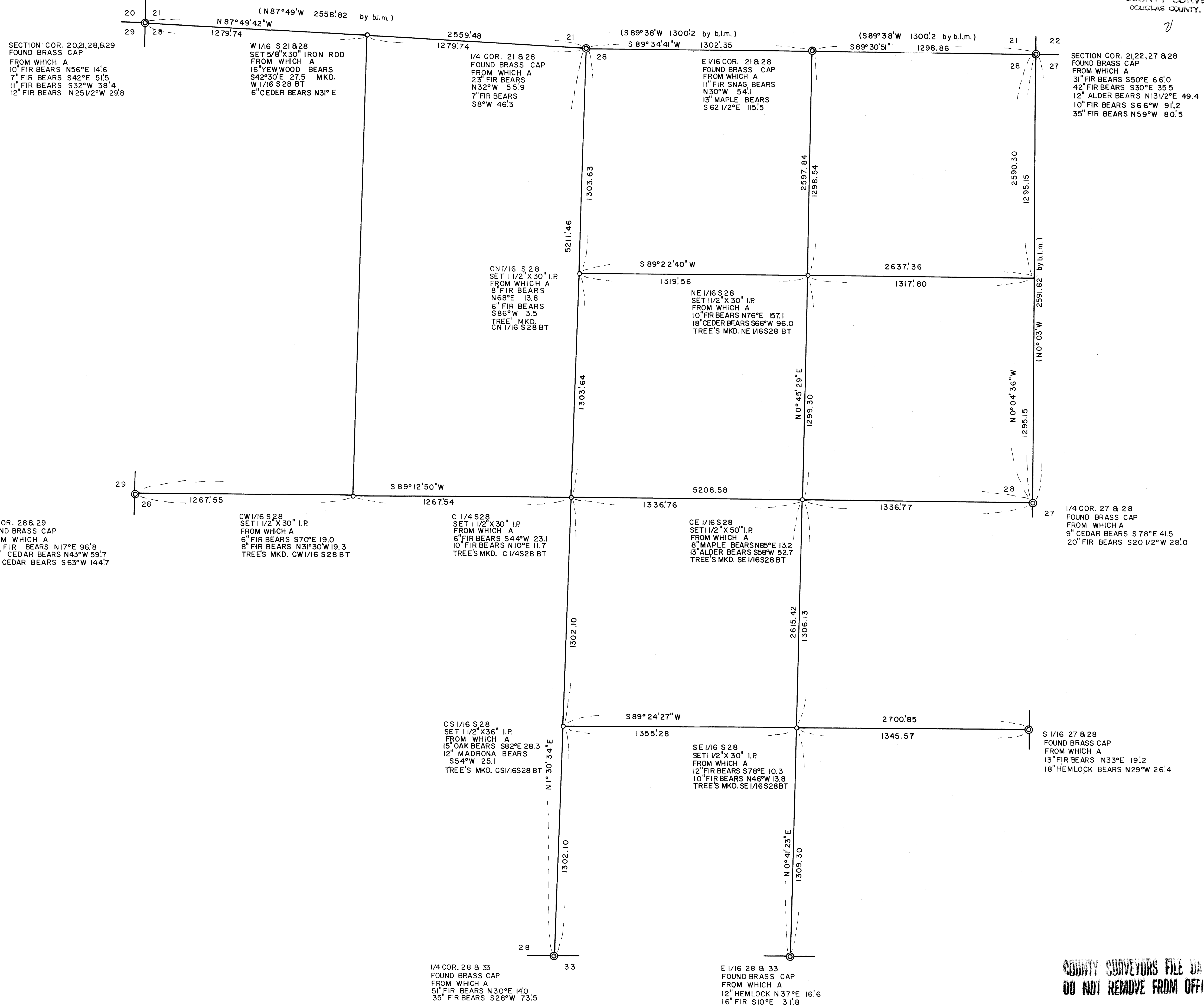
SURVEY IN SECTION 28, T.28S. R.4W. W.M.

FOR: SUN STUDS INC.

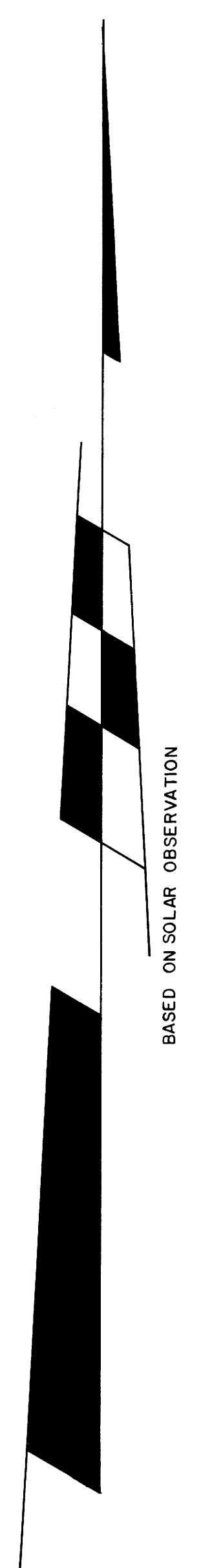
BY: BURTON W. HOLT

JUNE 1977

SCALE 1" = 300'



BURTON W. HOLT
 COUNTY SURVEYOR
 DOUGLAS COUNTY, ORE.
 JUN 15 1977



COUNTY SURVEYORS FILE DATA
DO NOT REMOVE FROM OFFICE

DATE	APPROVED BY	DRAWING NUMBER