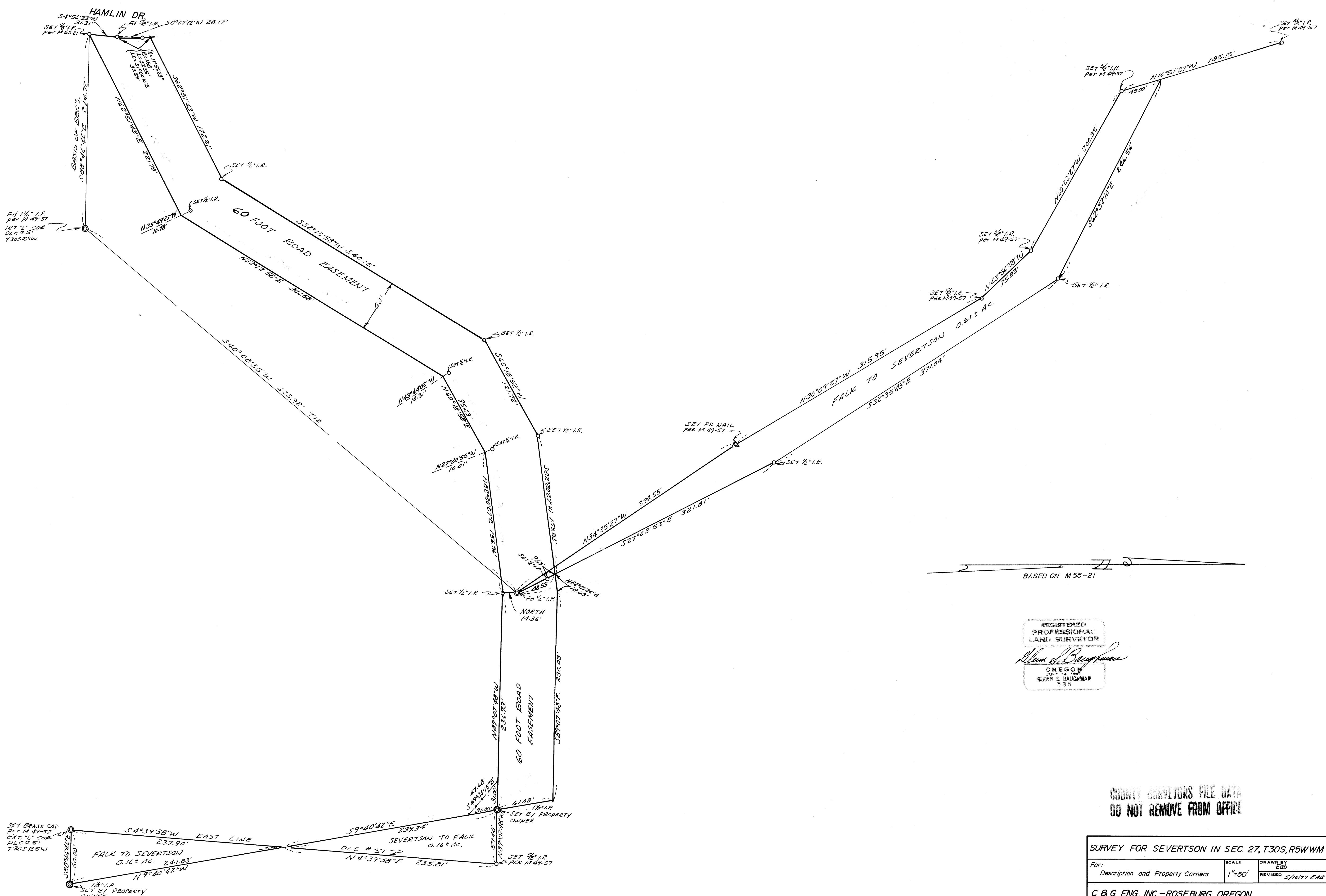


COUNTY SURVEYORS FILE DATA  
DO NOT REMOVE FROM OFFICE

FILED  
RECEIVED  
JUN 14 1977  
COUNTY SURVEYOR  
DOUGLAS COUNTY, OREGON



BASED ON M 55-21

REGISTERED  
PROFESSIONAL  
LAND SURVEYOR

*Glenn S. Baughman*

OREGON  
GLENN S. BAUGHMAN  
59

COUNTY SURVEYORS FILE DATA  
DO NOT REMOVE FROM OFFICE

SURVEY FOR SEVERTSON IN SEC. 27, T30S, R5W, W4		
For: Description and Property Corners	SCALE 1"=50'	DRAWN BY EDD
C & G ENG., INC. - ROSEBURG, OREGON		REVISED 5/11/77 EAB
DATE 4/29/77	APPROVED BY	DRAWING NUMBER 6140.0000-38