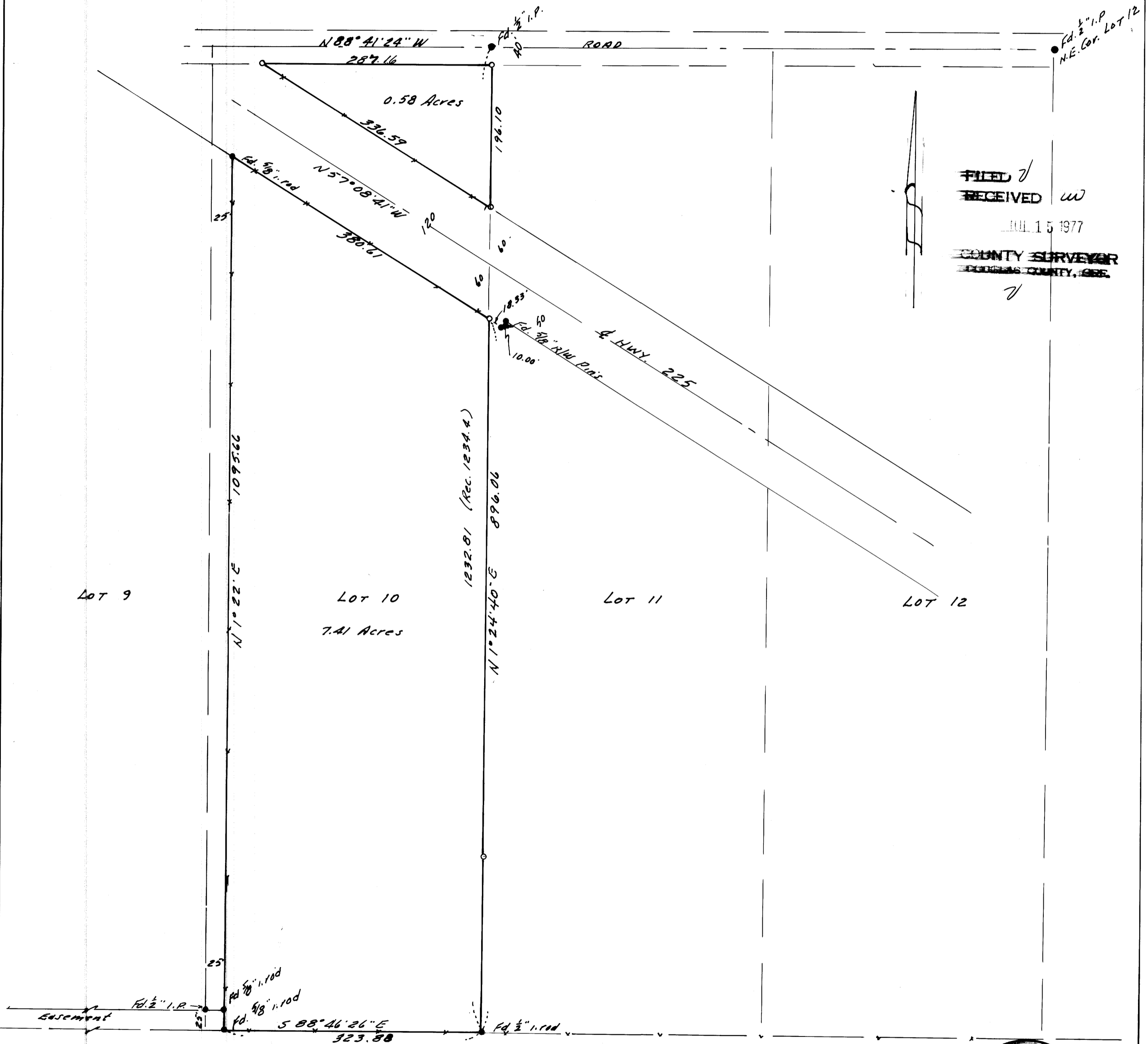


# SURVEY TO SET PROPERTY CORNERS IN LOT 10, BLOCK 6, PLAT M, S. L. & W. CO., SEC. 13, T. 25 S., R. 6 W. W. M.

SURVEYED FOR - T. SULLIVAN  
BY - W. S. BARNES

COUNTY SURVEYORS FILE DATA  
DO NOT REMOVE FROM OFFICE

JULY 1977



FILED ✓  
RECEIVED W  
JUL 15 1977  
COUNTY SURVEYOR  
DOUGLAS COUNTY, ORE.  
✓

- Monuments Found
- 1/8" i. rods set.

Base bearing taken from west property line Lot 10.  
References - C.S. File M 43-21 & M 54-12.

