

SURVEY IN SEC. 36, T26S, R7W. W.M.
 TO ESTABLISH PROPERTY LINE

SURVEYED FOR - E. A. RUSSELL
 SURVEYED BY -

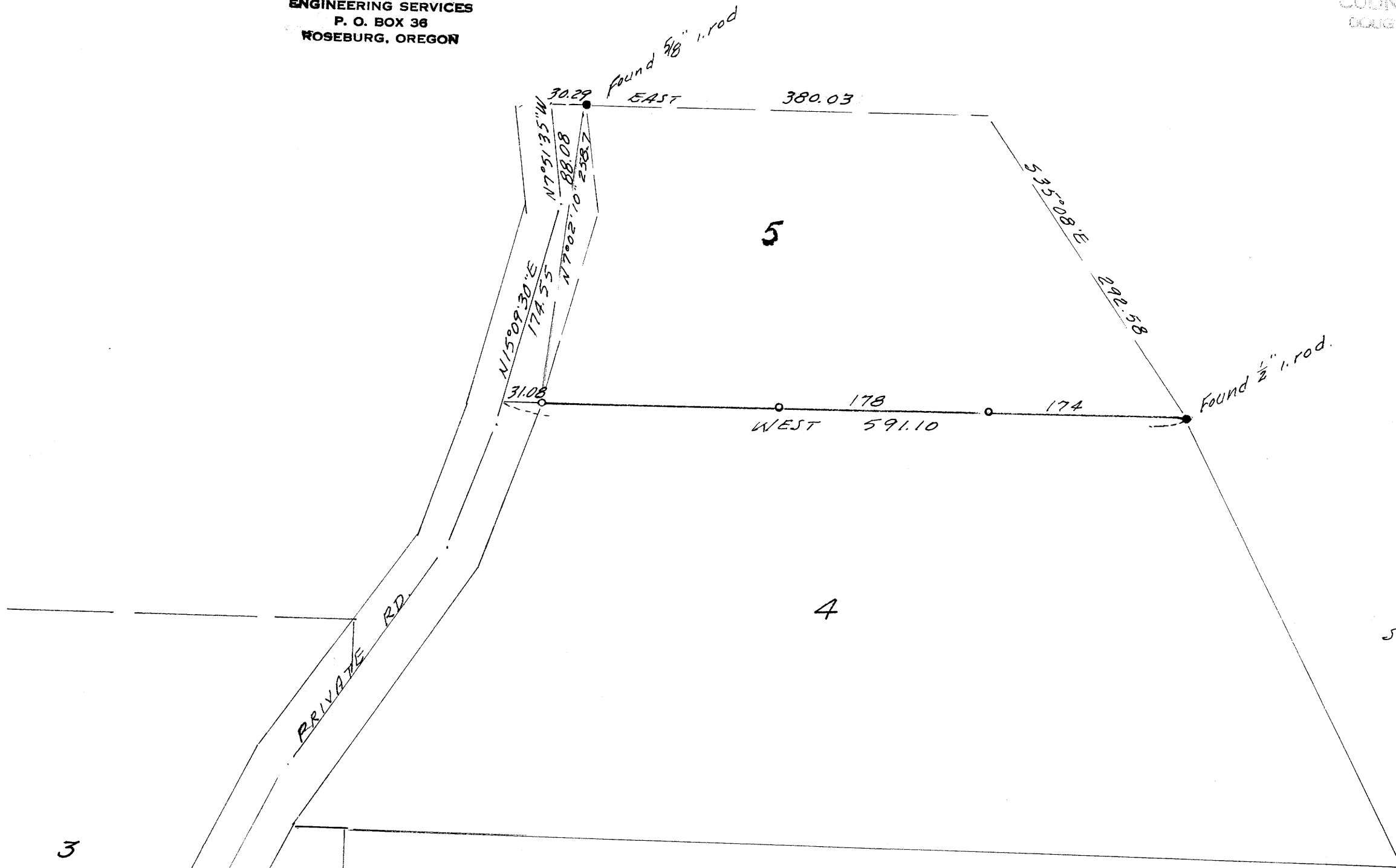
JULY 1977

FILED ✓
 RECEIVED w

JUL 15 1977

COUNTY SURVEYOR
 DOUGLAS COUNTY, ORE.

W. S. BARNES
 ENGINEERING SERVICES
 P. O. BOX 36
 ROSEBURG, OREGON



• Denotes monuments found.
 ○ " 5/8" iron rods set
 Base bearing taken from North line Lot 4.
 References - M 38-44

COUNTY SURVEYORS FILE DATA
 DO NOT REMOVE FROM OFFICE



M 64 - 79