

COUNTY SURVEYORS FILE DATA  
DO NOT REMOVE FROM OFFICE

SURVEY IN SECTION 28, T. 26 S., R. 6 W., W. M.  
SURVEYED FOR DONALD B. HARMON  
SURVEYED BY R. H. GEE  
JUNE, 1977

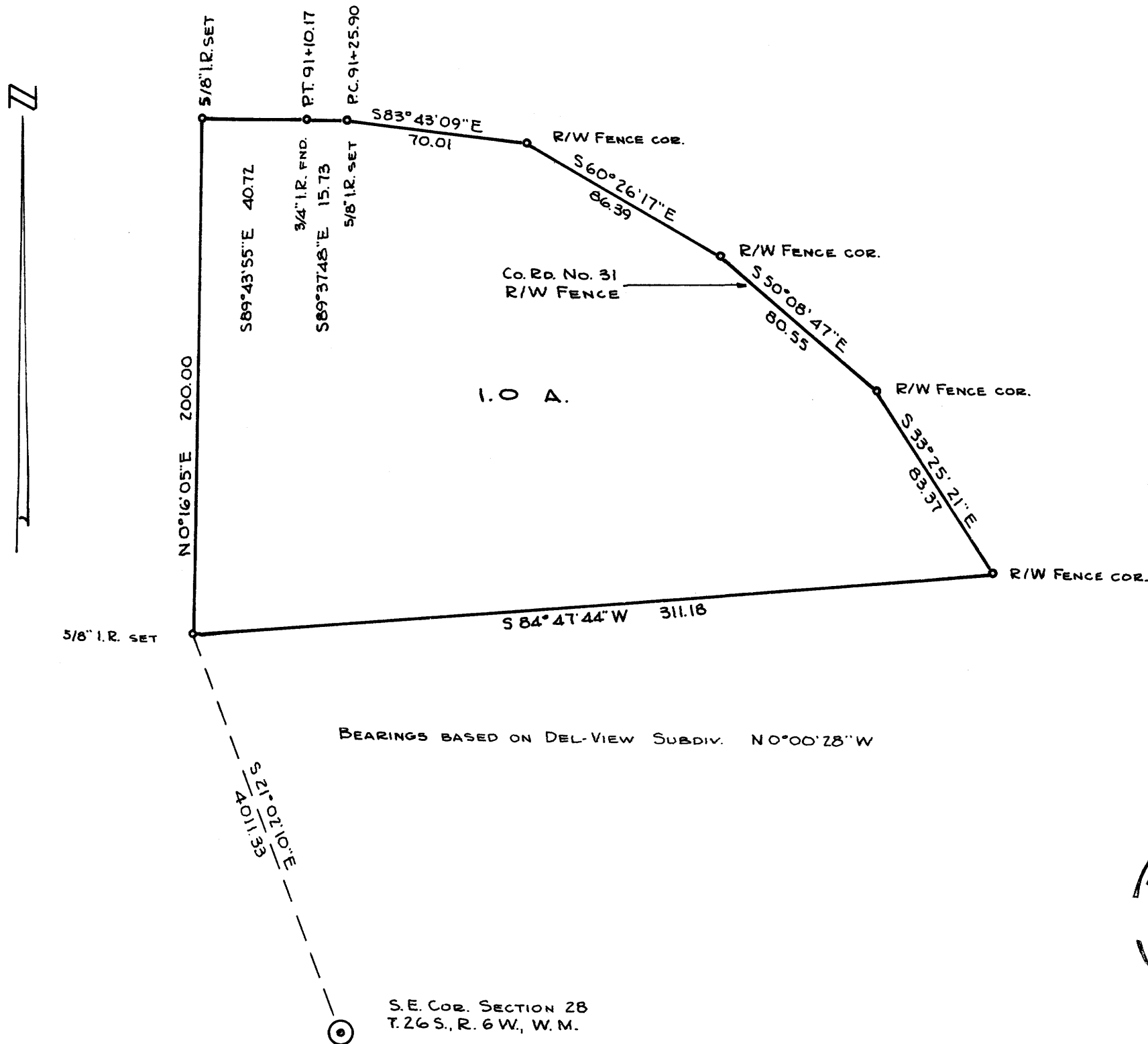
SCALE 1" = 50'

FILED *dh*  
RECEIVED *dh*

JUL 8 1977

COUNTY SURVEYOR  
DOUGLAS COUNTY, ORE.

MAP FILE M64-73



MAP FILE M64-73