

# SURVEY IN SECTION 16, T23S, R5W, W.M.

FOR: CHARLES CANFIELD  
 BY: BHW ENG & SURVEYING

JULY, 1977

SCALE = 1" = 400'

COUNTY SURVEYORS FILE DATA  
 DO NOT REMOVE FROM OFFICE

FILED ✓  
 RECEIVED ✓

JUL 8 1977

COUNTY SURVEYOR  
 DOUGLAS COUNTY, ORE.

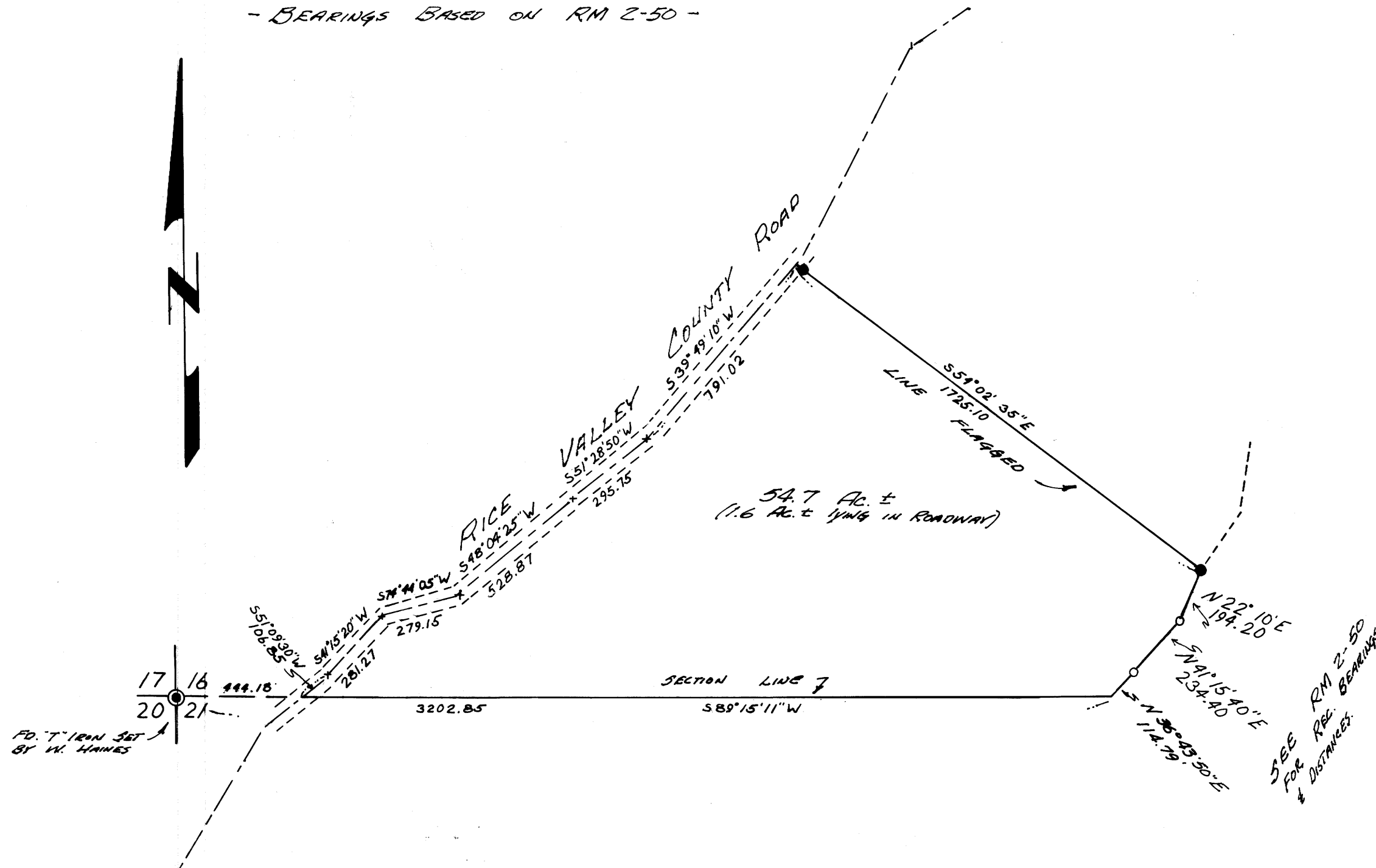
REGISTERED  
 PROFESSIONAL  
 LAND SURVEYOR

*Romano E. Ware*

OREGON  
 NOV. 16, 1973  
 ROMANSO E. WARE  
 1005

● - SET 5/8" I. ROD  
 ○ - FD. 3/8" I. ROD

- BEARINGS BASED ON RM 2-50 -



MAP FILE N64-72

MAP FILE N64-72