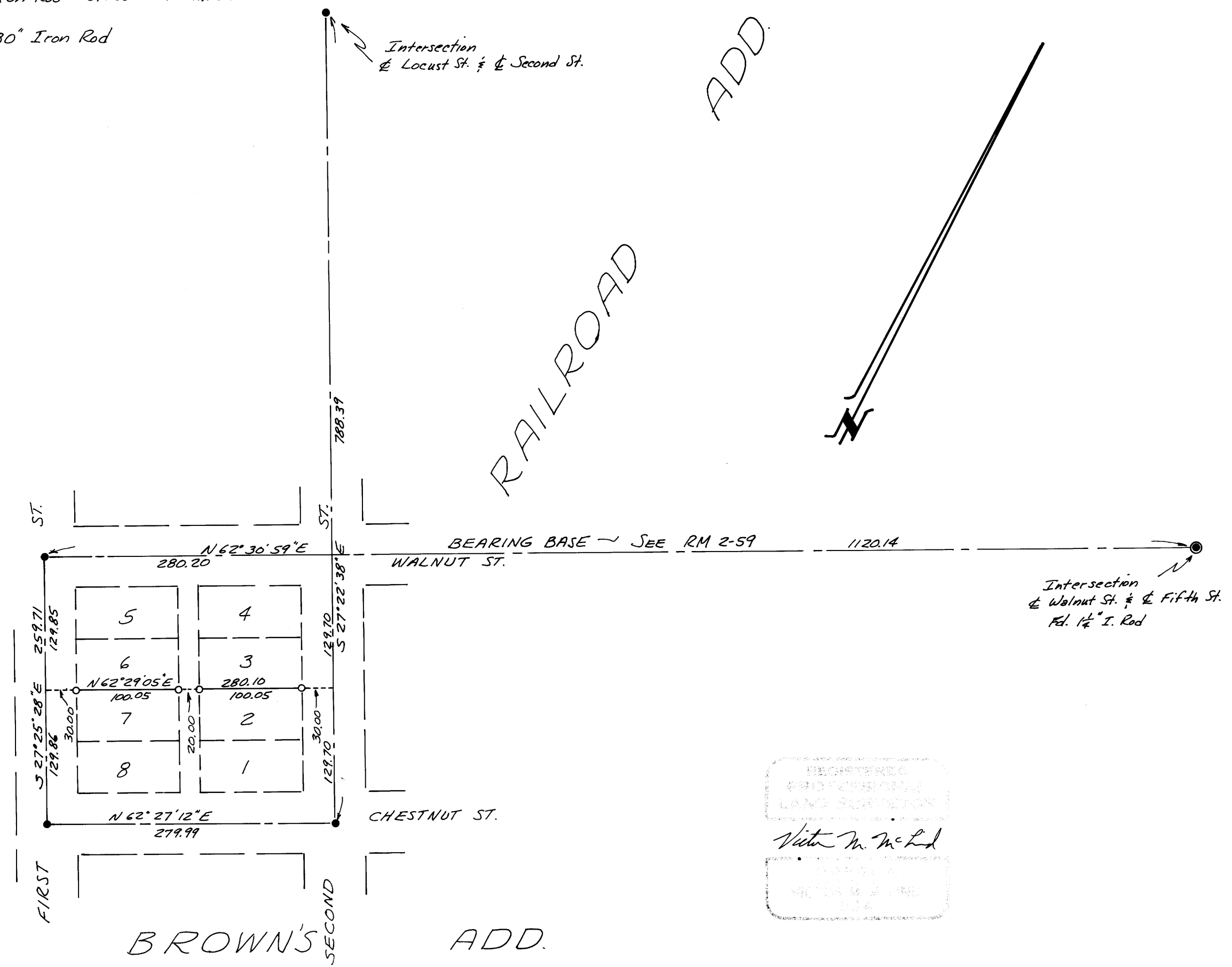


FILED ✓
RECEIVED ✓
MAY 8 1977
COUNTY SURVEYOR
DOUGLAS COUNTY, ORE.
✓

SURVEY TO SET LOT CORNERS IN BLOCK 17, RAILROAD ADD. TO OAKLAND Sec. 4, T25S, R5W, W.M.

Surveyed for J.V. Chenoweth and Jack Keene by Victor M. McLind
May, 1977
Scale: 1" = 100'

- ~ Indicates found $\frac{5}{8}$ " Iron Rod Street Monument
- ~ Indicates Set $\frac{5}{8}$ " x 30" Iron Rod



MAP FILE M64-7

MAP FILE M64-7