

COUNTY SURVEYORS FILE DATA

DO NOT REMOVE FROM OFFICE

T. 27 S R. 6 W. SEC. 23 NE NW
SURVEY TO ESTABLISH PROPERTY CORNERS
IN LOT 8, LUELLEN ACRES, ROSEBURG, ORE.

SURVEYED FOR - TRANS AMERICAN TITLE CO.

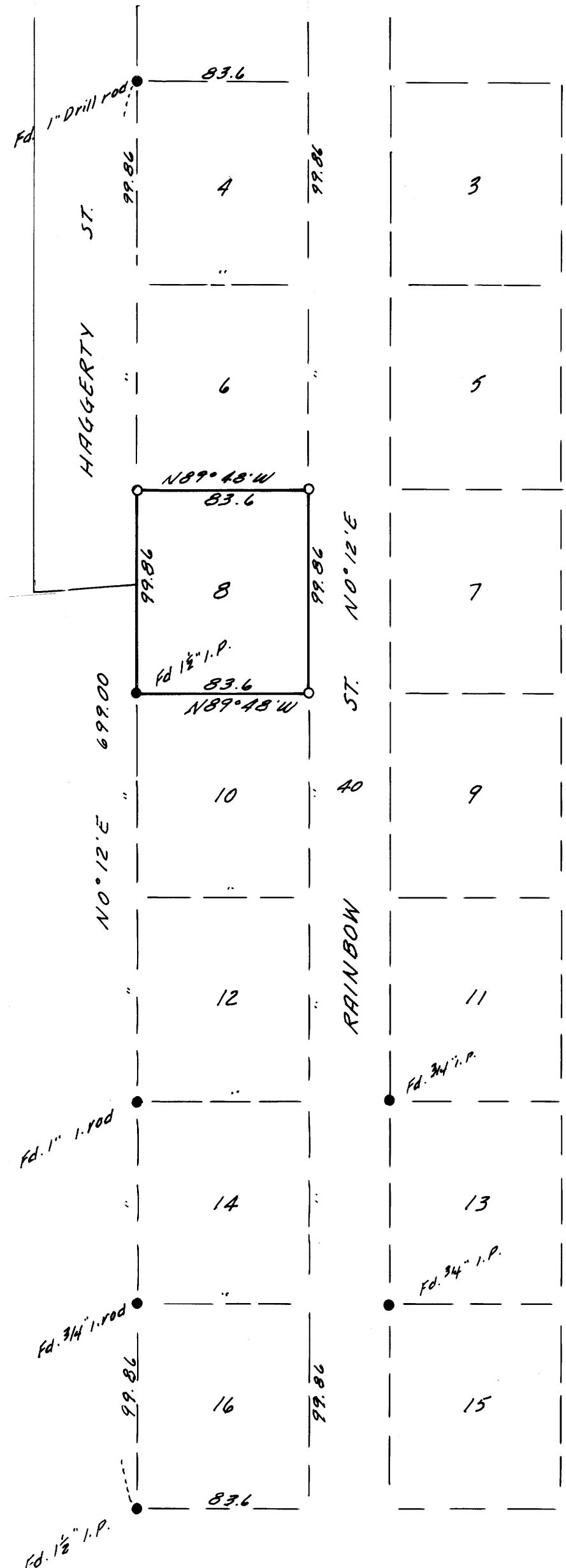
BY - W. S. BARNES
ENGINEERING SERVICES
P. O. BOX 36
ROSEBURG, OREGON

JUNE 1977

FILED ✓
RECEIVED ✓

JUN 23 1977

COUNTY SURVEYOR
DOUGLAS COUNTY, ORE.



Scale 1" = 60'



• Denotes monuments found.
 ○ " 3/8" iron rods set
 Base bearing taken from west line of LUELLEN ACRES.