

COUNTY SURVEYORS FILE DATA
DO NOT REMOVE FROM OFFICE

SURVEY TO SUBDIVIDE SECTION 23, T 29 S, R 6 W, W.M.

Surveyed for Ollis Van Meter by Victor M. McLind

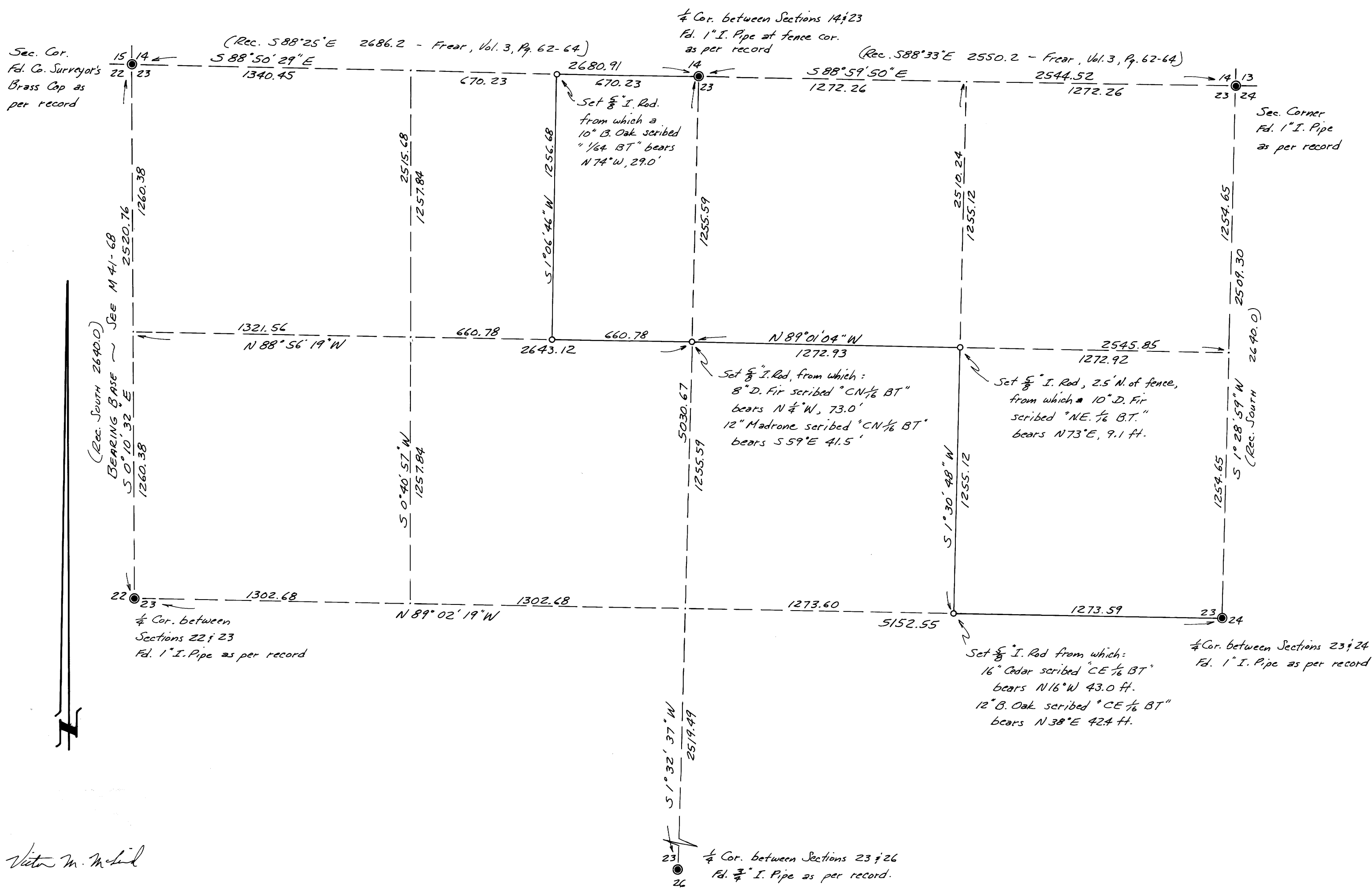
May 1977

Scale: 1" = 400'

FILED
RECORDED

COUNTY SURVEYOR
DOUGLAS COUNTY, ORE.

o ~ Indicates Set 5/8" x 30" Iron Rod



Victor M. McLind

MAP FILE M 64-6

M 64-6