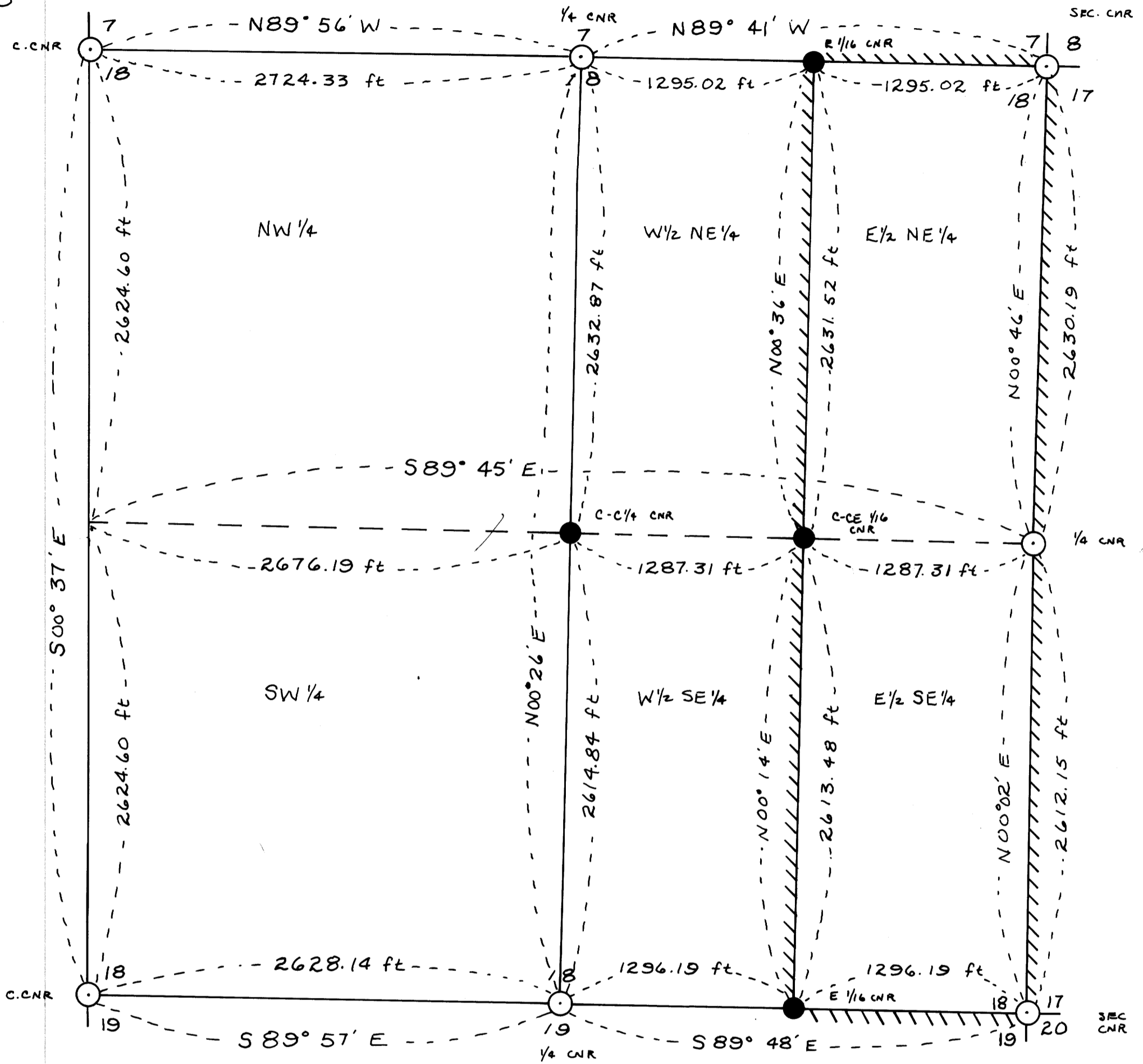


Map File M64T59
C.S. File 58/139

WEYERHAESER COMPANY
S.W. OREGON REGION
SURVEY IN SECTION 18, T. 25 S., R. 8 W., W.M.
DOUGLAS COUNTY, OREGON
APRIL 15, 1977

FILED ✓
RECEIVED ✓
JUN 21 1977
COUNTY SURVEYOR
DOUGLAS COUNTY, ORE.
✓

SCALE: 1" = 600'



REGISTERED
PROFESSIONAL
LAND SURVEYOR

Michael S. McDowell

OREGON
AUGUST 22 1975
MICHAEL S. MCDOWELL
1032

- LEGEND
- CORNERS FOUND
 - CORNERS SET
 - LINE SURVEYED
 - - - LINE PROJECTED
 - //// LINE BLAZED

DRAWN: 4-15-77 MSM

APPROVED: *[Signature]*

COUNTY SURVEYORS FILE DATA
DO NOT REMOVE FROM OFFICE

C.S. File 58/139

Map File M64T59

CS FILE FOLDER

CONTAINS

MORE

INFORMATION