

COUNTY SURVEYORS FILE DATA
DO NOT REMOVE FROM OFFICE

SURVEY FOR DESCRIPTION

IN SECTION 16, T.26S. R.5W. W.M.

FOR: LATALL & JEFFERIES

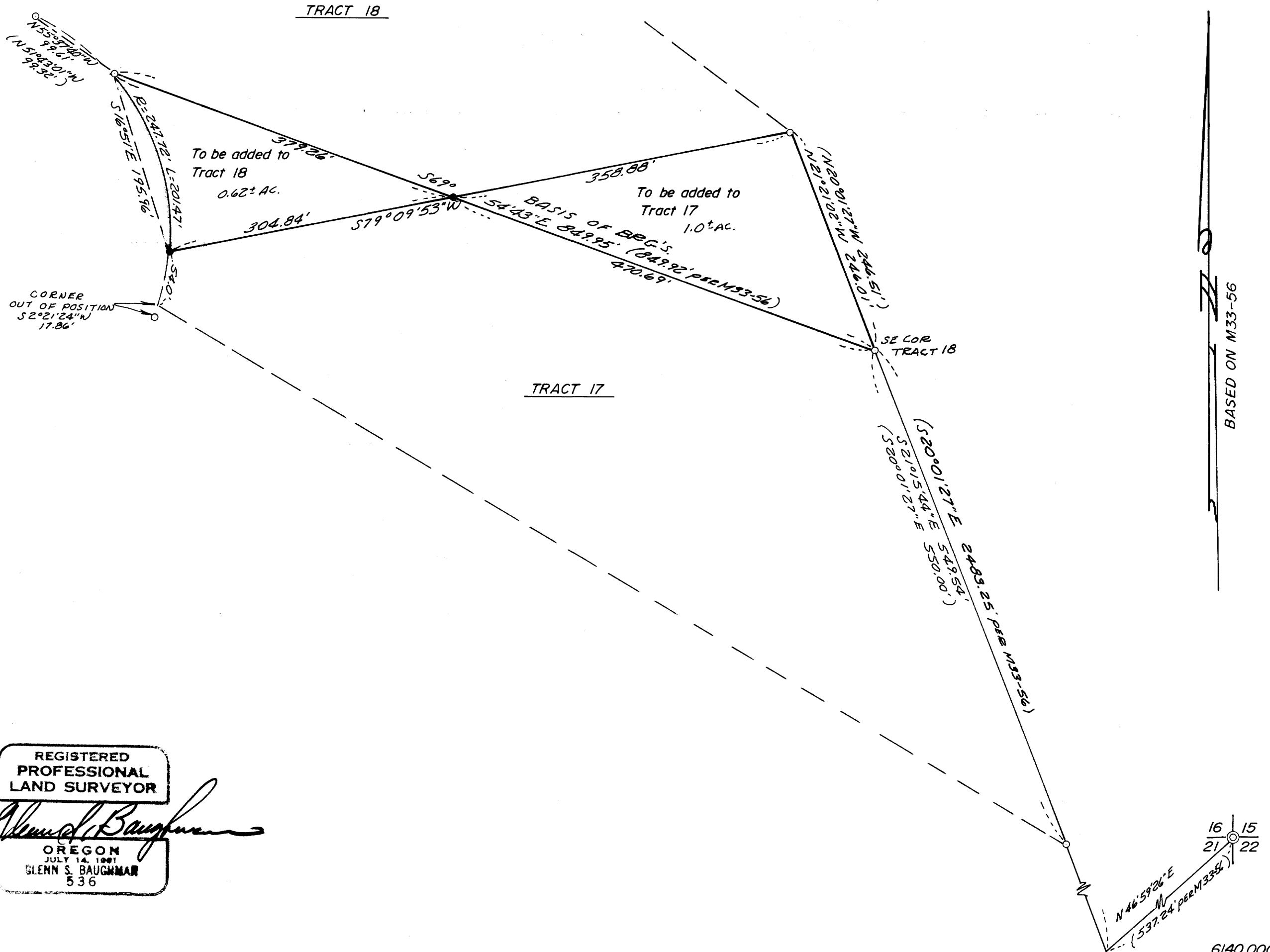
BY: C & G ENG, INC.

JUNE 1977 — SCALE: 1"=100'

FILED ✓
RECEIVED D&S

JUN 14 1977

COUNTY SURVEYOR
DOUGLAS COUNTY, ORE.
MC



REGISTERED
PROFESSIONAL
LAND SURVEYOR

Glenn S. Baughman

OREGON
JULY 14, 1901
GLENN S. BAUGHMAN
536

BASED ON M33-56

MAP FILE 464-49

MAP FILE 464-49