

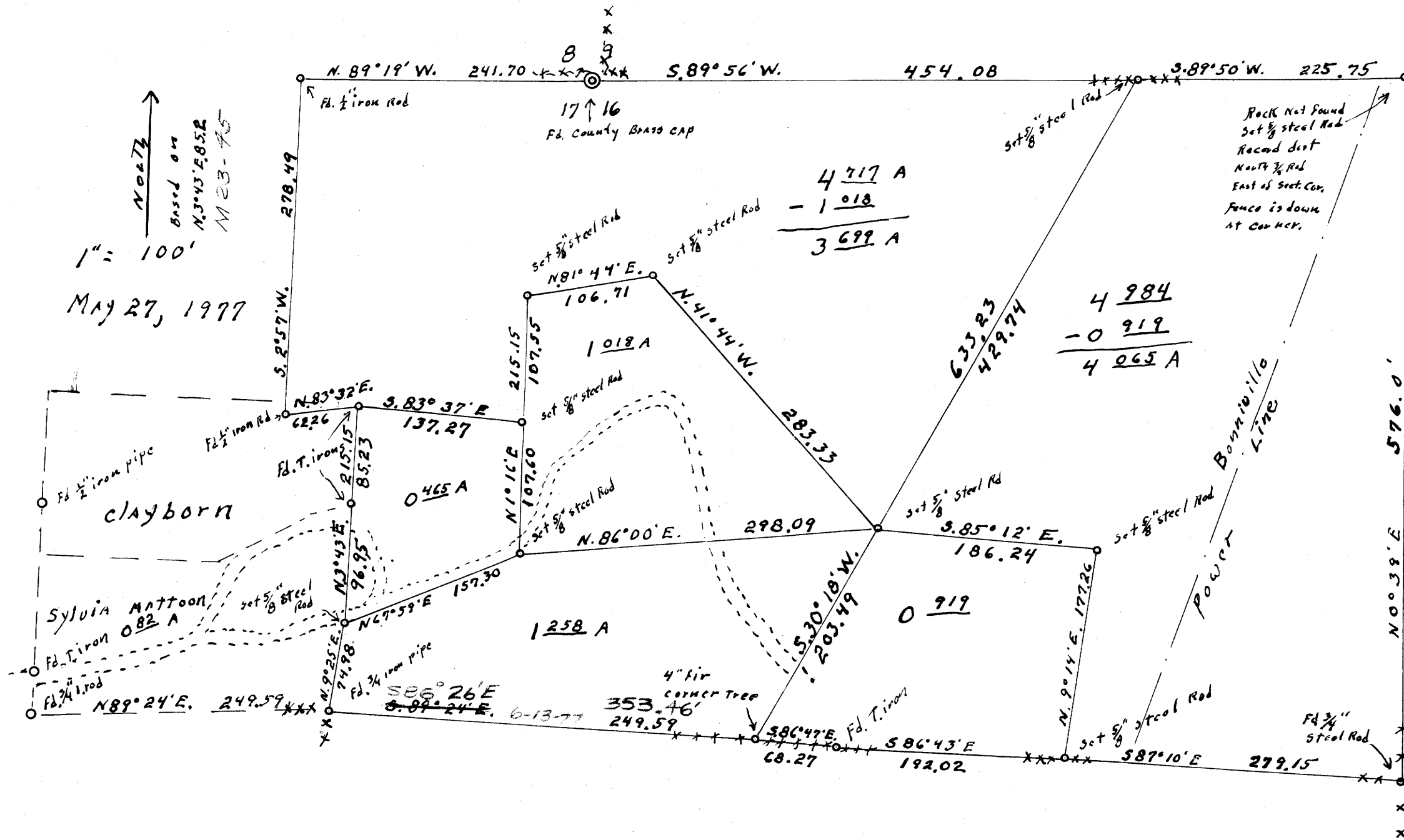
COUNTY SURVEYORS FILE DATA  
DO NOT REMOVE FROM OFFICE

FILED  
RECEIVED

JUN 1 1977

COUNTY SURVEYOR  
DOUGLAS COUNTY, ORE.

MAP FILE N. 64-740



REGISTERED  
OREGON  
LAND SURVEYOR  
*Wilford N. Haines*  
MAY 7, 1948  
WILFORD N. HAINES  
239

SECTS. 16+17 T. 22 S., R. 5 W. W. M.

Survey for Deed Descriptions

For

JASON + Byrene Huckins

Drain Oregon

MAP FILE N. 64-740