

**SUBDIVISION OF SECTION 29
TOWNSHIP 28 SOUTH RANGE 8 WEST W.M.
DOUGLAS COUNTY ORE.**

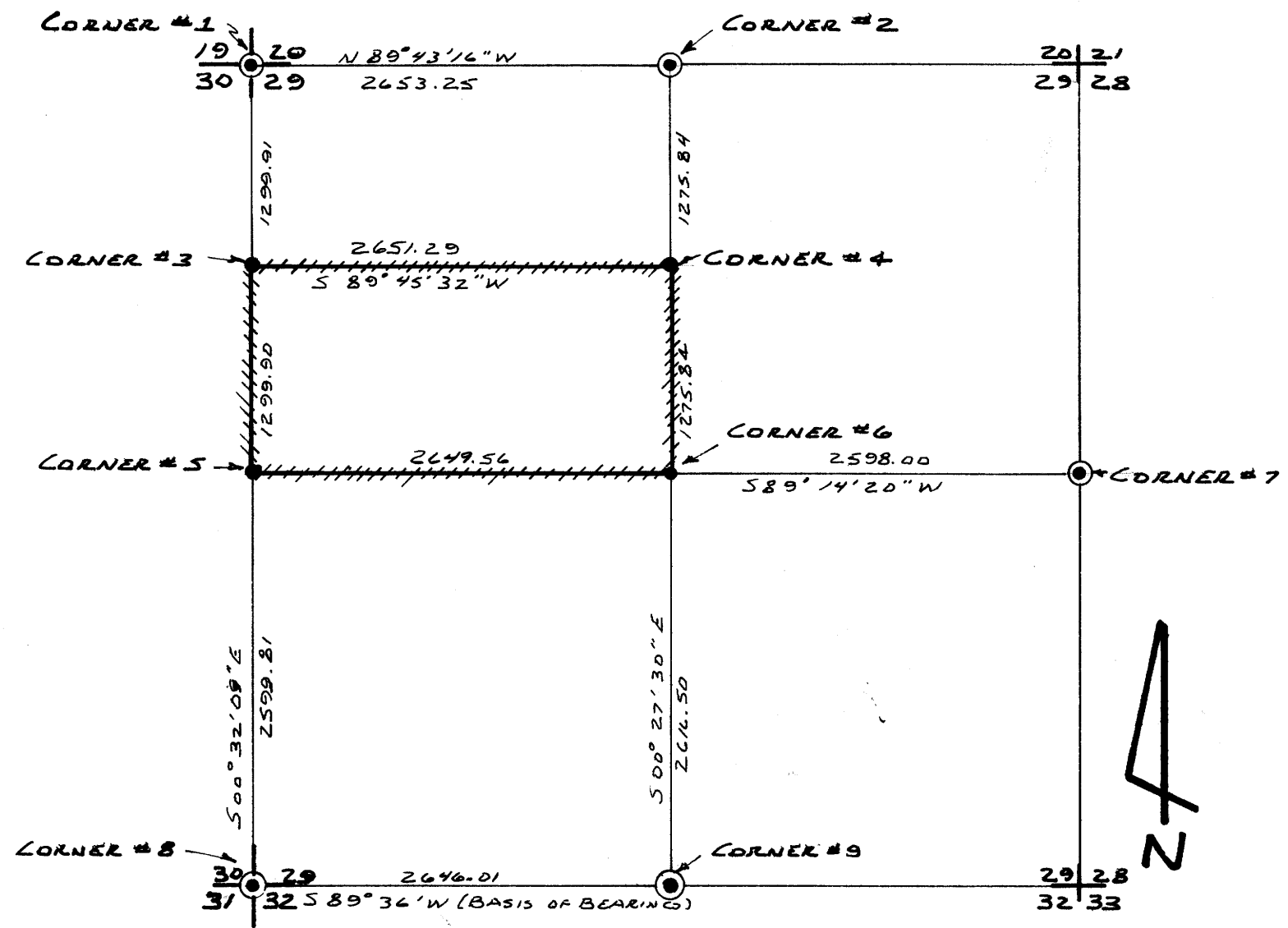
DO NOT REMOVE FROM OFFICE

FILED
RECEIVED

MAY 5 1977

COUNTY SURVEYOR
DOUGLAS COUNTY, ORE.

SURVEY FOR:
DR. & MRS KEIZER
2300 N 14TH, COOS BAY, ORE.

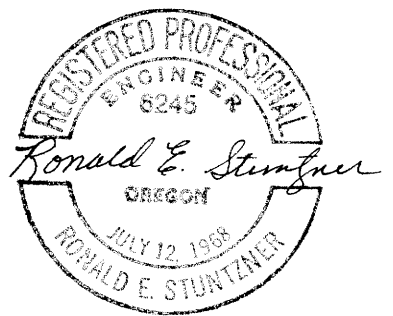


- CORNER #1 FD BLIP AT SECTION CORNER 19/20
30/29
FD BT 5" D. FIR N 35 E 29.31 FT
FD BT 10" HEMLOCK S 77 W 55.6 FT
FD BT 12" HEMLOCK N 69 W 30.3 FT
FD BT 10" CEDAR S 20 E 38.8 FT
- CORNER #2 FD BLIP AT 1/4 CORNER 20/29
FD 26" PDC S 29 E 22.2 FT
FD BT 36" FIR STUMP S 60 E 18.5 FT
FD BT 30" FIR STUMP N 4° E 18.5 FEET
- CORNER #3 SET 5/8 I.R. AT N 1/16 CORNER 30/29
10" FIR N 3° W 9.1 FEET SCRIBED & TAGGED
4" CEDAR S 6 E 17.3 FEET SCRIBED & TAGGED
- CORNER #4 SET 5/8 I.R. AT C-N 1/16 CORNER SECTION 29
8" FIR S 31 W 8.6 FEET SCRIBED & TAGGED
28" FIR N 18 E 6.5 FEET BARK SCRIBED & TAGGED
- CORNER #5 SET 5/8 I.R. AT 1/4 CORNER 30/29 WITH STEEL POST
14" MADRONE N 81 W 28.8 FEET TAGGED & SCRIBED
16" FIR N 79 E 18.5 FEET TAGGED & SCRIBED
- CORNER #6 SET 5/8 I.R. & STEEL POST AT C-S 1/4 CORNER
10" FIR S 50 W 18.7 FEET TAGGED & SCRIBED
24" CEDAR S 6 E 17.3 FEET TAGGED & SCRIBED
- CORNER #7 FOUND BLIP AT 1/4 CORNER 29/28
FD BT 12" W FIR N 10 E 20.5 FT
FD BT 17" O. FIR N 77 W 45.5 FT
FD BT 16" LAUREL S 55 W 20 LKS
FD BT 20" LAUREL S 80 E 18 LKS
- CORNER #8 FD BLIP AT SECTION CORNER 30/29
31/32
FD BT 12" D.F. N 46 W 4 LKS (ORIG)
FD BT 10" D.F. S 42 W 43 LKS (ORIG)
FD BT 10" D.F. S 58 E 24 LKS (ORIG)
FD BT 6" D.F. N 2 E 42 LKS (ORIG)
- CORNER #9 FD IRON ROD AT 1/4 CORNER 29/32
ORIG 12" OAK N 14 W 46 LKS
ORIG 12" OAK S 16 W 16 LKS
50" D. FIR EAST 13.0 FEET

MAP FILE M 64 - 3

LEGEND

- MONUMENTS FOUND
- MONUMENTS SET
- BASIS OF BEARING AS SHOWN
- DATE APR 1977
- SCALE 1" = 1000'
- ##### TRUE LINE MARKED



SURVEY BY:
STUNTZNER ENGINEERING & FORESTRY
P.O. Box 118... 375 PARK... COOS BAY ORE

MAP FILE M 64 - 3