

COUNTY SURVEYORS FILE DATA
DO NOT REMOVE FROM OFFICE

SURVEY IN BLOCK 4, "GADDIS PLAT A" IN SECTION 13, T27S, R6W, W.M.

SURVEY FOR NORTH ROSEBURG SANITARY DISTRICT
SURVEY BY BHW ENGINEERING & SURVEYING, INC.
APRIL, 1977
SCALE: 1" = 20'

FILED ✓
RECEIVED ✓

MAY 18 1977

COUNTY SURVEYOR
DOUGLAS COUNTY, ORE.

- — DENOTES SET 5/8" I. ROD.
- — DENOTES FD. MONUMENT.

CONTOUR LINES @ 1 FOOT INTERVALS.
ELEVATIONS ASSUMED.
BASED ON A SPIKE IN A 16" OAK TREE
BEARING SOUTHWEST FROM THE SOUTHEAST
CORNER OF LOT 19. ELEV. = 500.00'

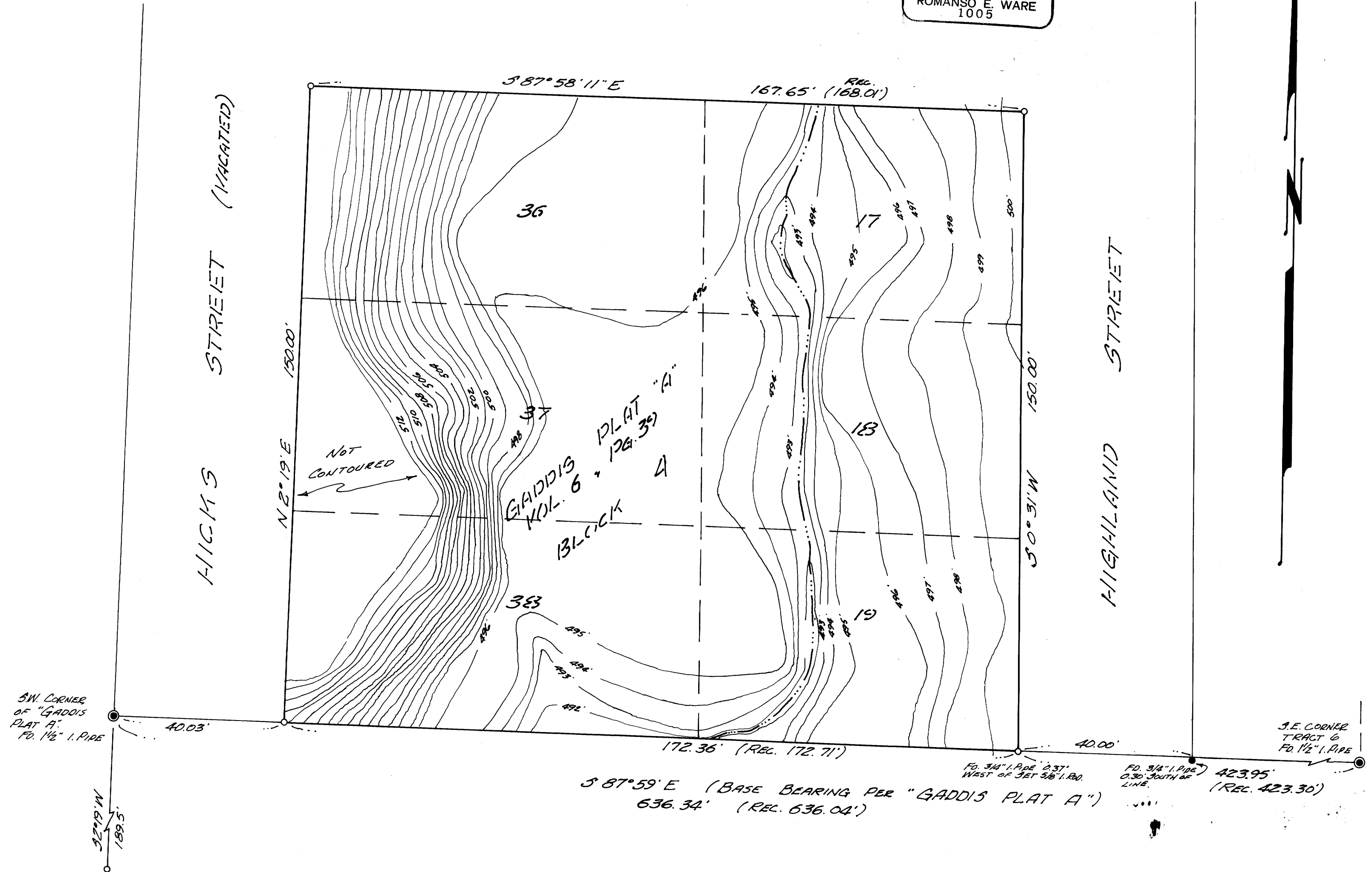
REGISTERED
PROFESSIONAL
LAND SURVEYOR

Romano E. Ware

OREGON
NOV. 16, 1975
ROMANSO E. WARE
1005

HICKS STREET (VACATED)

HIGHLAND STREET



MAP FILE M. 6. 4 - 29

MAP FILE M. 6. 4 - 29