

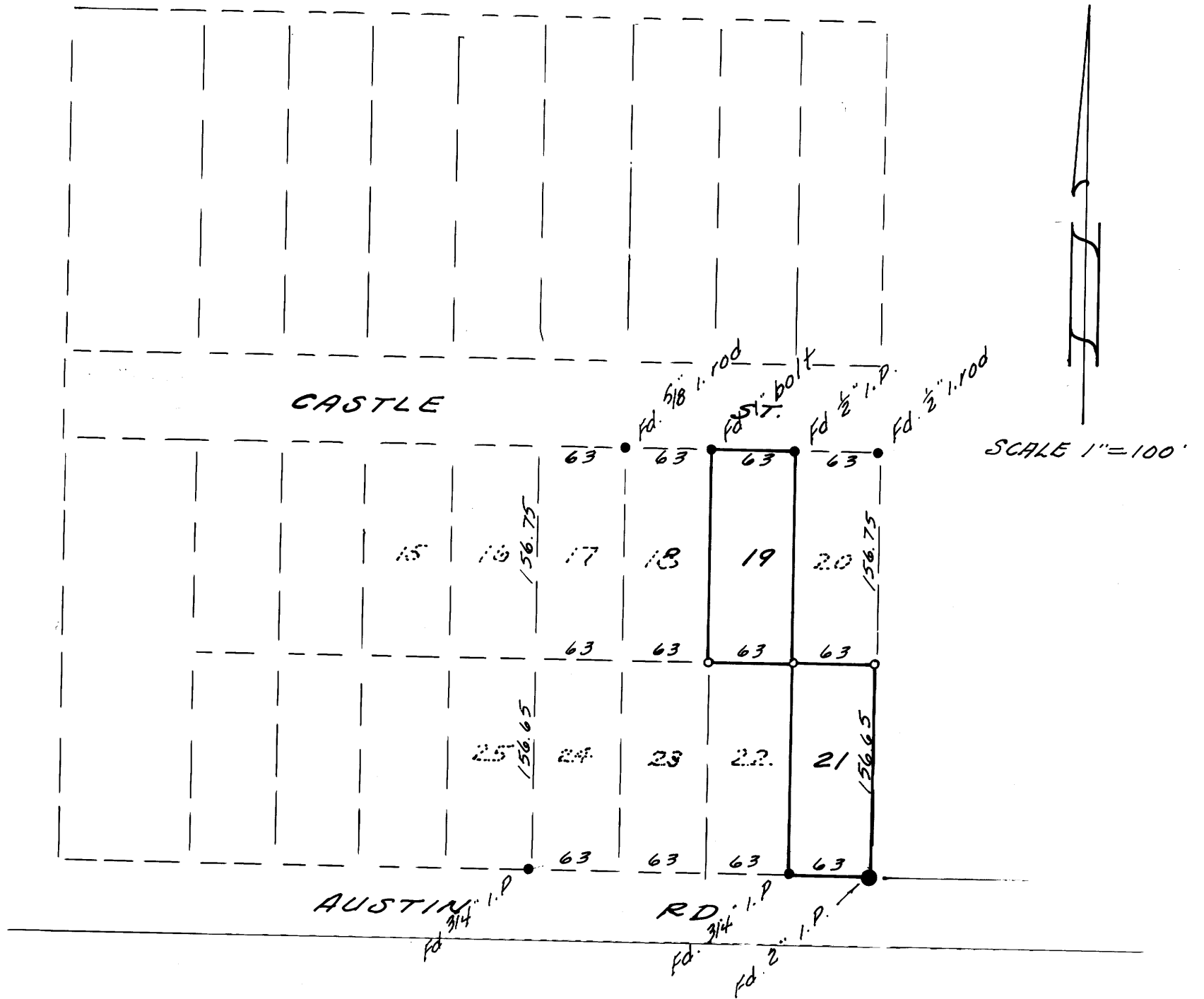
COUNTY SURVEYORS FILE DATA
DO NOT REMOVE FROM OFFICE

SURVEY OF LOTS 19 & 21, PORTER SUB.
SEC. 3, T28S, R6W, W.M.

SURVEYED FOR - MARVIN GARDINER CONSTR. CO.
SURVEYED BY - W.S. BARNES ENG'R. SERV. MAY 1977

FILED ✓
RECEIVED ✓
MAY 17 1977

COUNTY SURVEYOR
DOUGLAS COUNTY, ORE.



- Monuments found
- 5/8" iron rods set

Base bearing taken from east line of PORTER SUB.

