

COUNTY SURVEYORS FILE DATA
DO NOT REMOVE FROM OFFICE

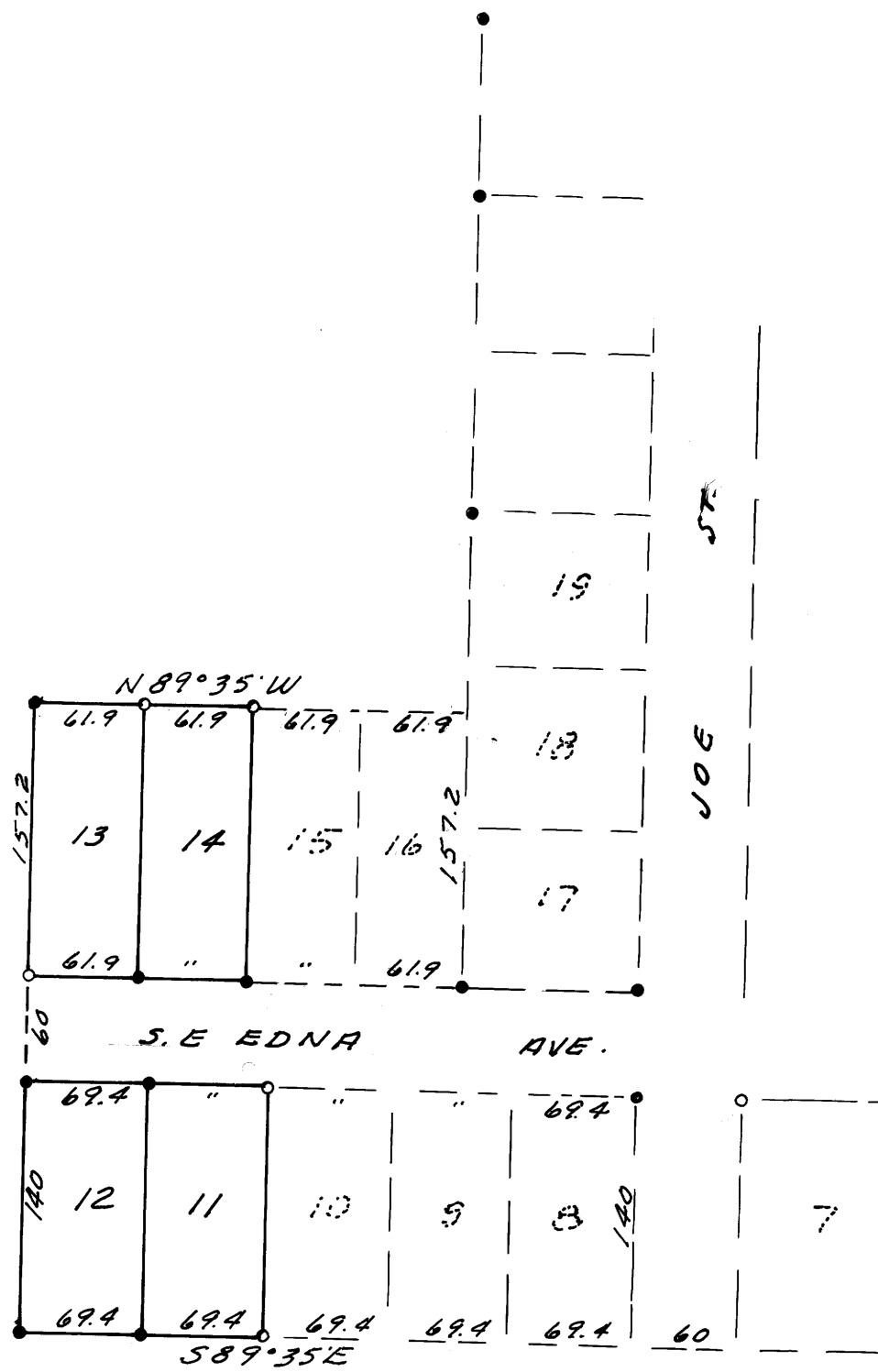
FILED ✓
RECEIVED 28

MAY 17 1977

SURVEY IN LOTS 11, 12, 13 & 14 - JOE PORTER SUB. COUNTY SURVEYOR
SEC. 3, T28S, R6W, W.M. DOUGLAS COUNTY, ORE.

SURVEYED FOR - MARVIN GARDINER CONSTR. CO.
SURVEYED BY - W.S. BARNES ENGR. SERV.

MAY 1977



- Denotes 1/2" I.P.s Found.
- " 5/8" iron rods set.

Base bearing taken from south line of JOE PORTER SUB.

