

# SURVEY FOR MORTGAGE PURPOSES IN SEC. 12 & 13, T.27S. R.7W.W.M.

COUNTY SURVEYORS FILE DATA  
DO NOT REMOVE FROM OFFICE

FOR: STANLEY ECCLES

BY: C & G ENG., INC.

APRIL 1977 SCALE: 1"=60'

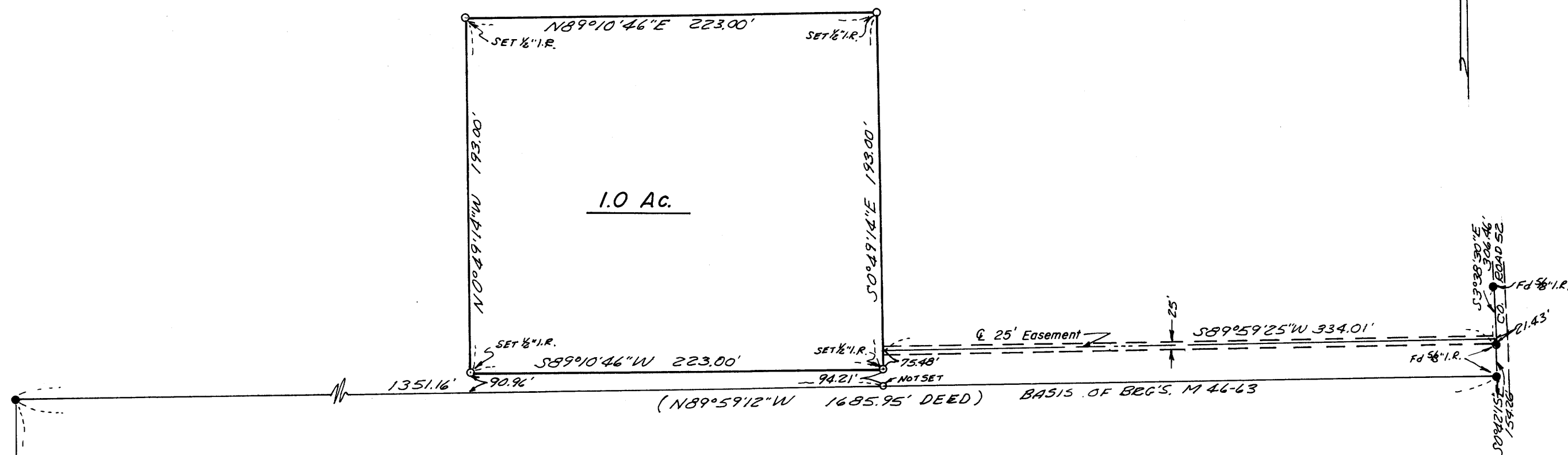
FILED ✓  
RECEIVED *JRL*  
MAY 16 1977

COUNTY SURVEYOR  
DOUGLAS COUNTY, ORE.

✓

BASED ON M46-63

MAP FILE M46-19



REGISTERED  
PROFESSIONAL  
LAND SURVEYOR

*Glenn S. Baughman*

OREGON  
JULY 14, 1961  
GLENN S. BAUGHMAN  
536

SE cor. DLC No. 46  
T.27S. R.7W.W.M.  
(CALC. FROM DEED)

REVISED 4/27/77  
EAB.  
6140.0000-32

MAP FILE M46-19