

COUNTY SURVEYORS FILE DATA  
DO NOT REMOVE FROM OFFICE

# SURVEY FOR PROPERTY CORNERS OF LOTS 1 & 2, BLOCK 6, MILLERS ADDITION

IN SECTION 30, T.27S. R.5W.W.M.

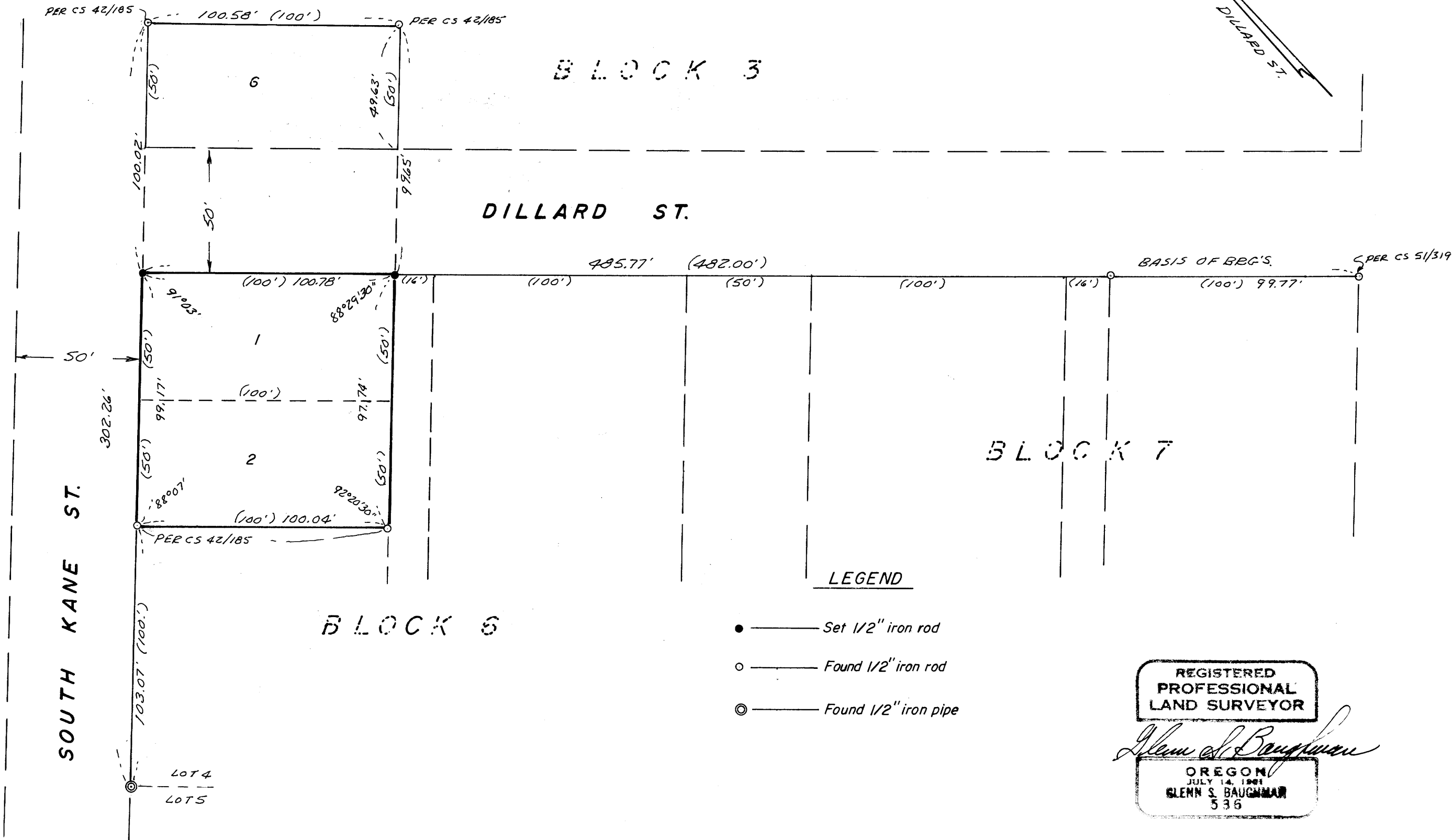
FOR: CLAUDE PLUNKETT — BY: C & G ENG., INC.

APRIL 1977 SCALE: 1" = 40'

FILED ✓  
RECEIVED *JRL*  
MAY 16 1977  
COUNTY SURVEYOR  
DOUGLAS COUNTY, ORE.

BASED ON NEWLY RUN DILLARD ST.

MAP FILE 1064-18



### LEGEND

- — Set 1/2" iron rod
- — Found 1/2" iron rod
- ⊙ — Found 1/2" iron pipe

REGISTERED  
PROFESSIONAL  
LAND SURVEYOR

*Glenn S. Baughman*

OREGON  
JULY 14, 1961  
GLENN S. BAUGHMAN  
536

MAP FILE 1064-18