

# SURVEY IN SECTION 14, T.21S. R.4W. W.M.

FOR: RALPH SCHEIDT  
BY: C & G ENG., INC.

COUNTY SURVEYORS FILE DATA  
DO NOT REMOVE FROM OFFICE

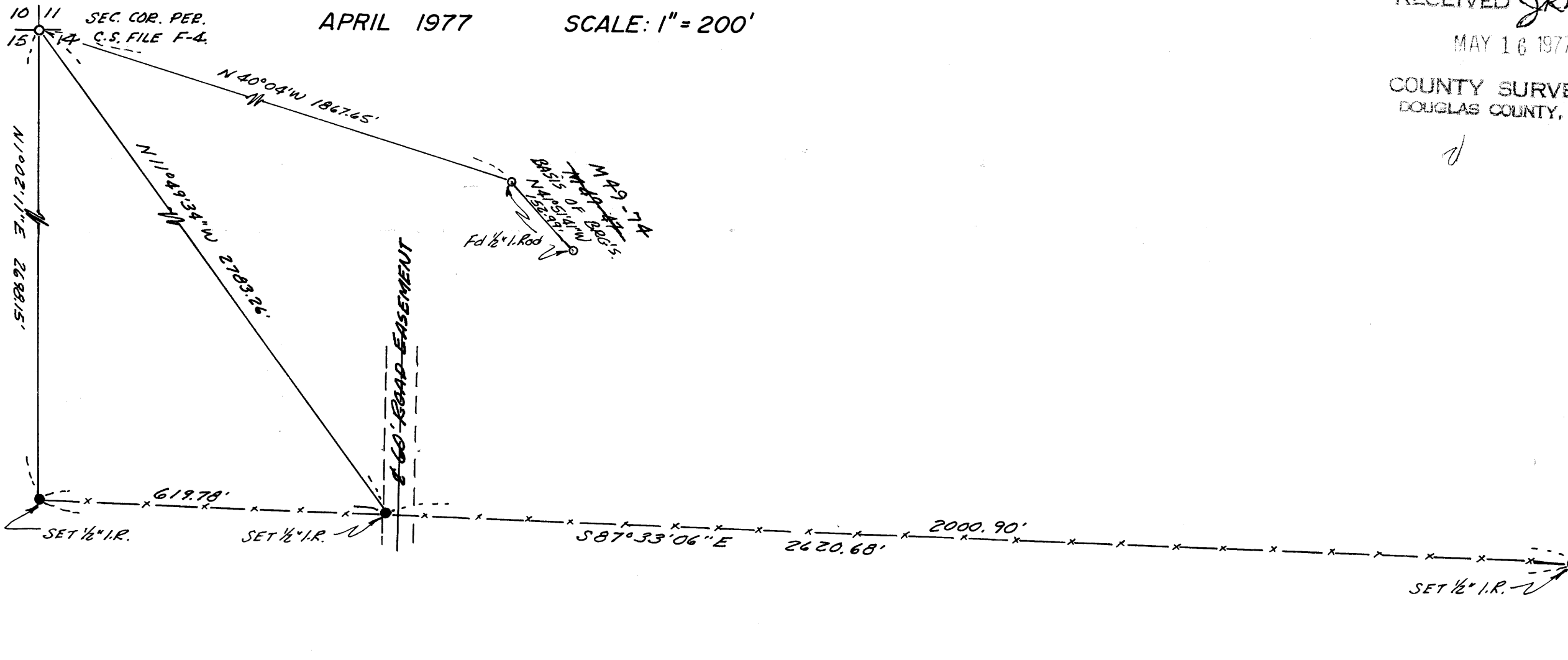
FILED  
RECEIVED *JRL*

MAY 16 1977

COUNTY SURVEYOR  
DOUGLAS COUNTY, ORE.

APRIL 1977

SCALE: 1" = 200'



REGISTERED  
PROFESSIONAL  
LAND SURVEYOR

*Glenn S. Baughman*

OREGON  
JULY 14, 1961  
GLENN S. BAUGHMAN  
535

6150.0017

MAP FILE 64-17

MAP FILE 64-17

MAP FILE 64-17