

COUNTY SURVEYORS FILE DATA DO NOT REMOVE FROM OFFICE

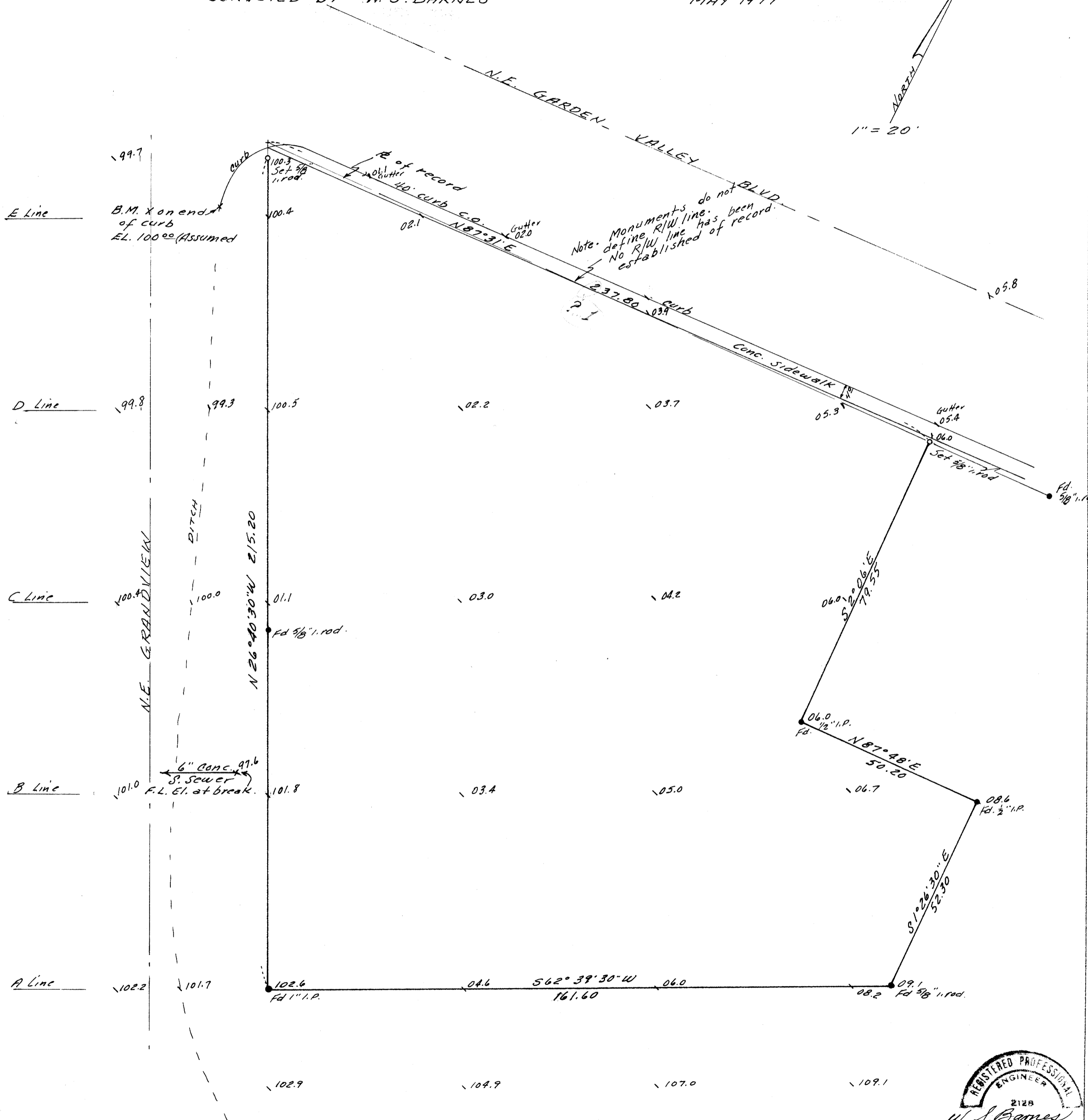
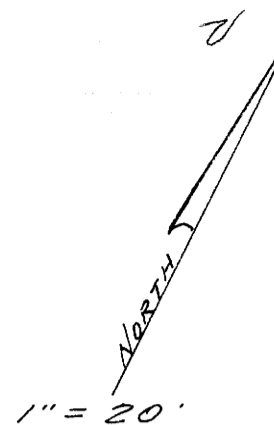
FILED ✓
RECEIVED EC

MAY 9 1977

COUNTY SURVEYOR
DOUGLAS COUNTY, ORE.

SURVEY IN LOT 3, BLK. 13 JONES ADDITION
IN SEC. 18, T27S, R5W, W.M.
ALSO IN T27S, R. 6W SEC. 13
SURVEYED FOR - ROY AMANN
SURVEYED BY - W. S. BARNES

MAY 1977



Note: Monuments do not define R/W line. No R/W line has been established of record.

Base bearing taken from south line of above survey.
See M 45-18

