

COUNTY SURVEYORS FILE DATA
DO NOT REMOVE FROM OFFICE

SURVEY IN LOT 22, FIRST BROOKSIDE ADDITION TO ROSEBURG, SECTION 20, T 27 S, R 5 W, W. M.

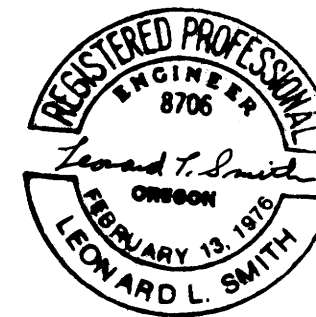
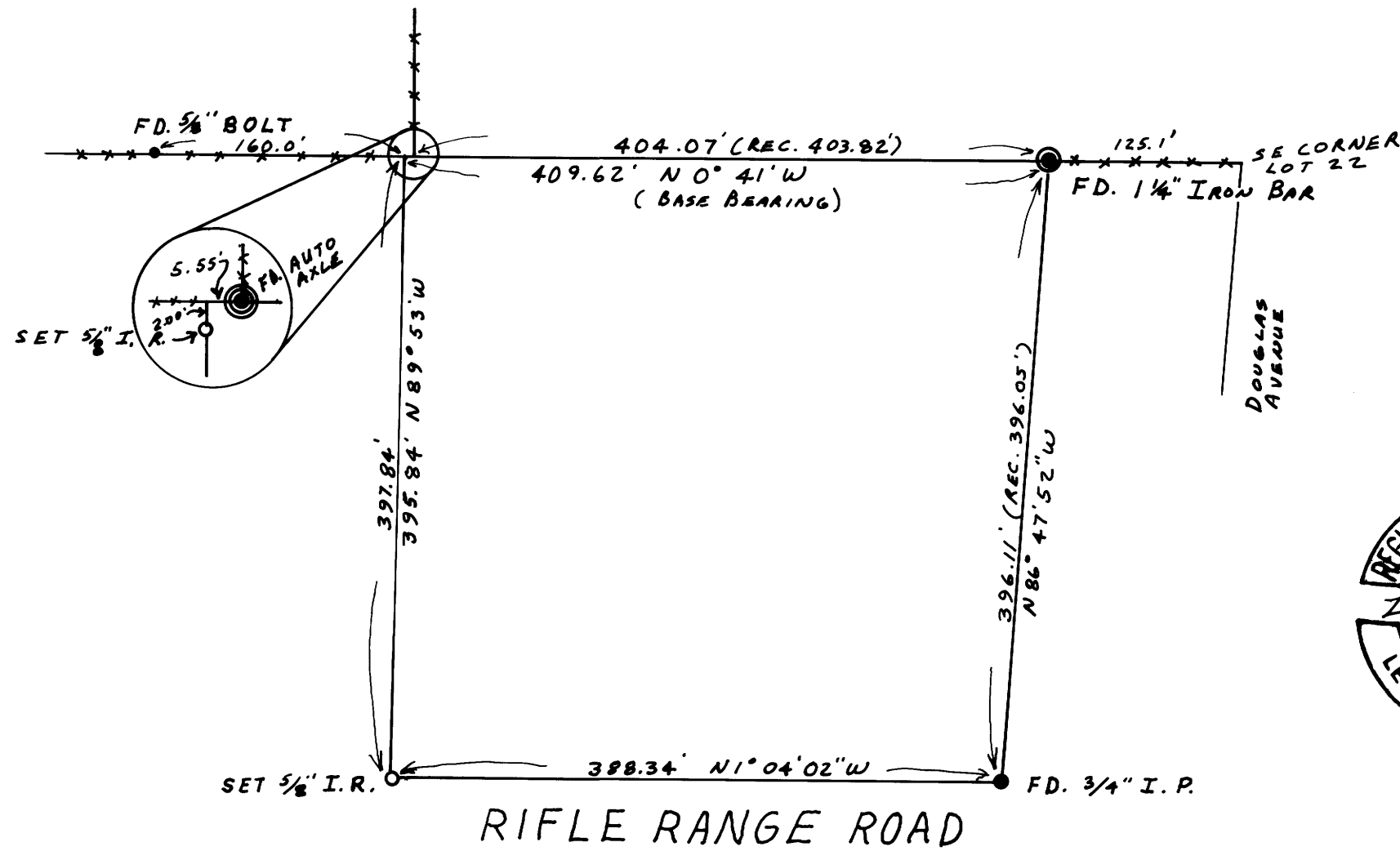
FOR: RON ELLIOT & BOB COMPTON

BY: S&J ENGINEERING

FILED ✓
RECEIVED ✓
FEB 4 1977

COUNTY SURVEYOR
DOUGLAS COUNTY, ORE.
✓

MAP FILE M 63-9



MAP FILE M 63-9