

FILED 7
RECEIVED 78
MAY 3 1977
COUNTY SURVEYOR
DOUGLAS COUNTY, ORE.

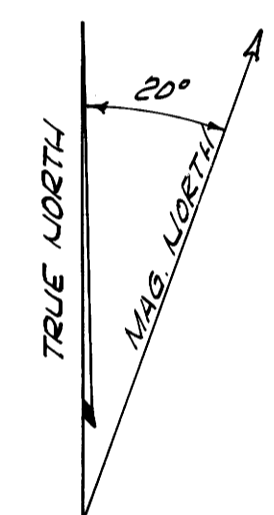
DEPENDENT SURVEY
TO ESTABLISH THE C/4 CORNER SECTION 30,
TOWNSHIP 28 SOUTH, RANGE 2 WEST, N.M.

DOUGLAS COUNTY, OREGON
APRIL 1977

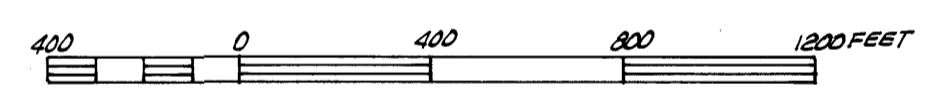
SURVEY FOR
U.S. FOREST SERVICE
UMPUQUA NATIONAL FOREST

CONTRACT NO 006297N
GLIDE LAND SURVEY NO. 5

- LEGEND**
- SET 3" BRASS CAP ON 2 1/2" X 30" G.I.P.
 - FOUND BRASS CAPS
 - TRUE LINE POSTED WITH STEEL POSTS WITH GOVERNMENT PROP. SIGNS
 - () G.L.O. DATA
 - DIRT ROAD



SCALE 1" = 400'



BEARINGS BASED ON SOLAR OBSERVATION

I, DONALD R. STONE, REGISTERED LAND SURVEYOR IN THE STATE OF OREGON, HEREBY CERTIFY THAT THIS PLAT AND NOTES HEREON ARE A CORRECT REPRESENTATION OF A SURVEY I PERFORMED DURING MARCH-APRIL, 1977 FOR THE UNITED STATES FOREST SERVICE IN ACCORDANCE WITH THE STATUTES OF THE STATE OF OREGON AND WITH THE ARTICLES OF MY CONTRACT.

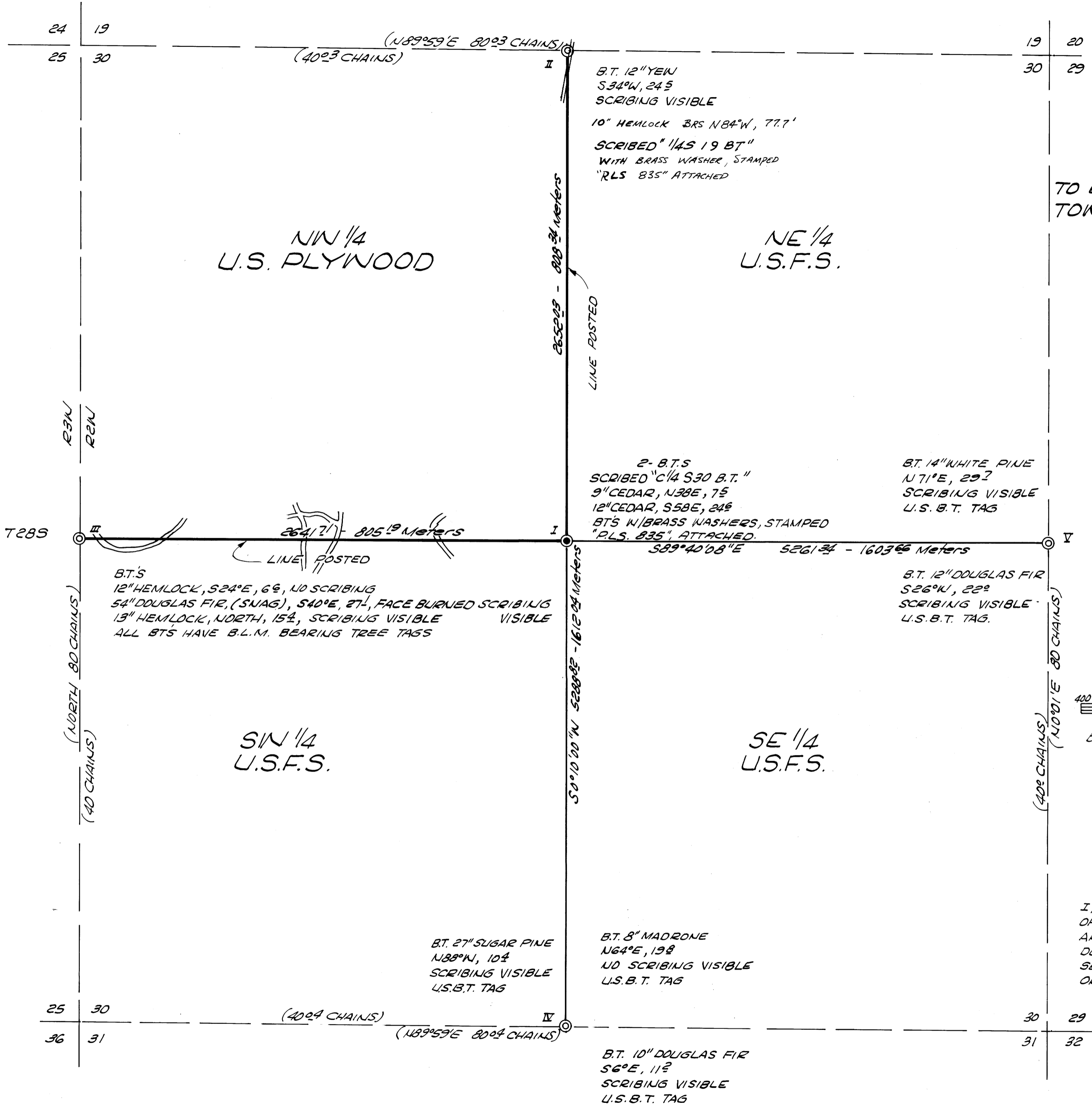
Donald R. Stone
REGISTERED LAND SURVEYOR NO. 835

REGISTERED
PROFESSIONAL
LAND SURVEYOR

Donald R. Stone
OREGON
MARCH 8, 1968
DONALD R. STONE
835

COUNTY SURVEYORS FILE DATA
DO NOT REMOVE FROM OFFICE

- I
T285, R2W
C/4, S30
1977
O.R.S. #835
- II
T285, R2W
1/4 S-19
1/4 S-30
1968
O.R.E. 4906
- III
COUNTY SURVEYORS OFFICE
T285
R2W
S29 S30
1/4
1962
- IV
T285, R2W
1/4 S30
S31
1968
O.R.E. 4906
- V
T285, R2W
1/4 S-30 S-29
1968
O.R.E. 4906



BY CHICKERING-GREEN EMPIRE, INC.