

2-89W

SURVEY FOR WEYERHAEUSER CO. IN SECTION 8, T.26S.R.2W.W.M. BY: C & G ENG, INC.

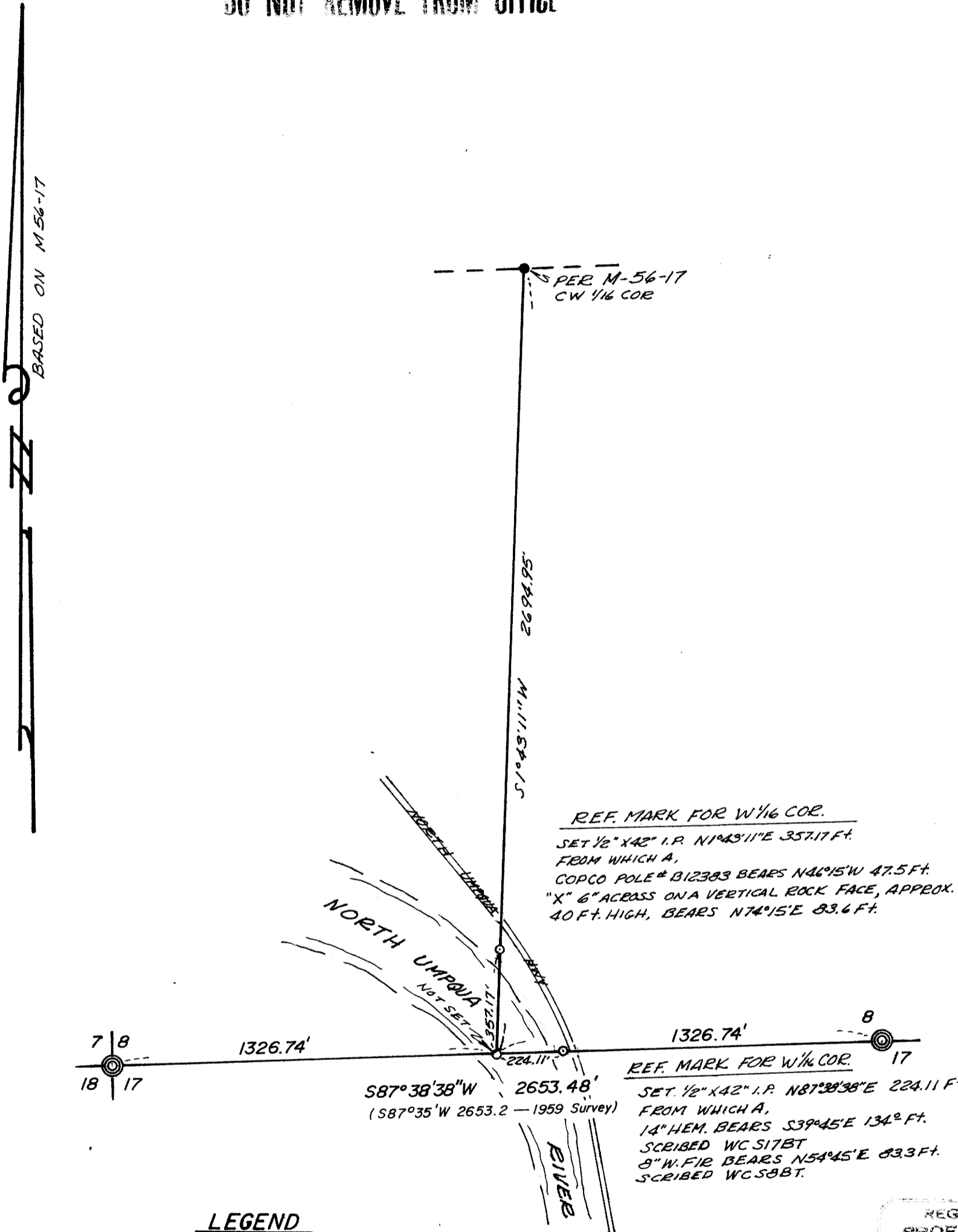
JANUARY 1977 SCALE: 1" = 400'

COUNTY SURVEYORS FILE DATA
DO NOT REMOVE FROM OFFICE

FILED ✓
RECEIVED ✓

FEB 4 1977

COUNTY SURVEYOR
DOUGLAS COUNTY, ORE.



LEGEND

- — Set 1/2" iron pipe
- — Found 5/8" iron rod
- ◎ — Found Brass cap

REGISTERED
PROFESSIONAL
LAND SURVEYOR

Glenn S. Baughman

OREGON
JULY 14, 1961
GLENN S. BAUGHMAN
536

ERROR OF CLOSURE
1/4578

6140.0040

MAP FILE M-63-7