

ADJUTANT SURVEYORS FILE DATA  
DO NOT REMOVE FROM OFFICE

# SUBDIVISION OF SECTION 36 T29S R9W.W.M.

## DOUGLAS COUNTY ORE

SCALE 1" = 1000'

DATE FEB 1977

FILED ✓  
RECEIVED MC

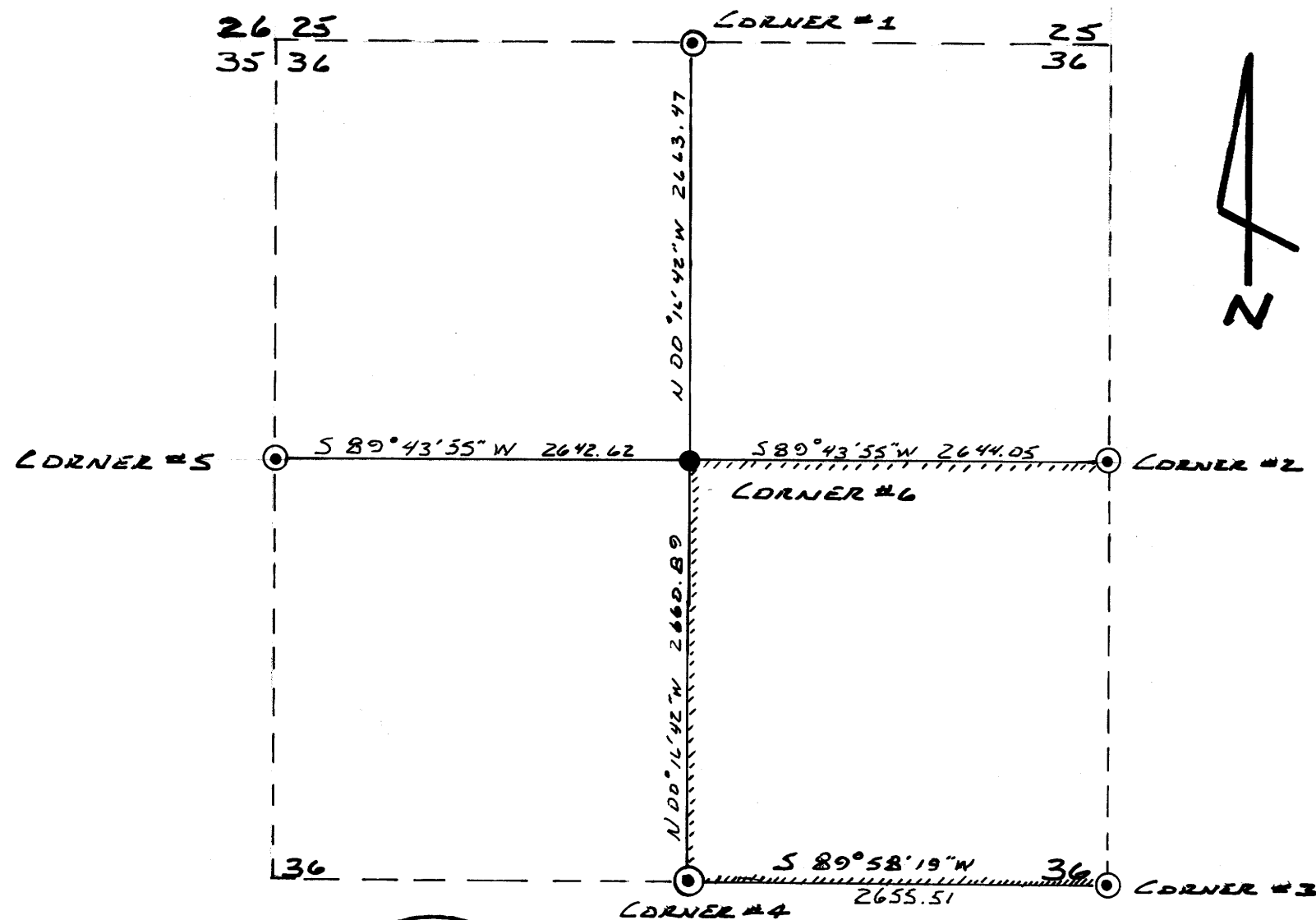
APR 13 1977

COUNTY SURVEYOR  
DOUGLAS COUNTY, ORE

✓

### SURVEY FOR:

DR. & MRS KEIZER  
2300 N 14TH LODS BAY ORE



**CORNER #1** FOUND 1 1/2" PIPE AT N 1/4 COR SEC 36  
B.T. 14" D.F. N 5° E 45 FEET FOUND  
B.T. N.E. NOW STUMP FOUND

**CORNER #2** FOUND BCIP AT E 1/4 COR SEC 36  
B.T. FOUND 27" D.F. STUMP S 33° E 33 LKS (21.8 FEET)  
B.T. FOUND 52" D.F. STUMP N 42° W 9 LKS (5.9 FEET)  
B.T. FOUND 15" D.F. N 9° E 48 LKS (31.7 FEET)  
B.T. FOUND 10" D.F. S 26 1/2° W 20 LKS (13.2 FEET)

**CORNER #3** TWP CORNER IS 45" S. PINE (FOUND), BCIP WITNESS COR S 35 E 18.5 LKS  
B.T.'S FOUND - 45° S. PINE N 80 E 5 LKS (3.3 FEET), 27" D.F. S 88 W 28 LKS,  
36" D.F. STUMP N 50 W 73 LKS (48.2 FEET), 21" D.F. N 57 E 58 LKS,  
18" D.F. S 66° W 34 LKS (22.4 FEET) 27" D.F. N 49 1/4° W 59 LKS (38.9 FEET)

**CORNER #4** FOUND 2" I.P. AT S 1/4 COR SEC 36  
FD 30" D.F. S 15 W 46.5 FEET (WINDFALL) - FD REMAINS OF 12" D.F. N 18 E 40.0 FEET  
SET B.T. 14" W.F. S 83° W 30.6 FEET TAGGED  
SET B.T. 12" W.F. N 13 E 14.5 FEET TAGGED

**CORNER #5** FOUND BCIP AT W 1/4 COR SEC 36  
B.T. FOUND D.F. SNAG S 72 E 46 LKS (30.4 FEET)  
B.T. FOUND 5" MADRONE S 75 E 28 LKS (18.5 FEET)  
B.T. FOUND N 83 W 109.5 LKS (72.3 FEET)  
WITNESS CORNER 1" AXLE S 81° W 11 FEET

**CORNER #6** SET 5/8 IRON ROD AT CTR 1/4 CORNER SEC 36  
SET B.T. 18" MADRONE S 88 E 17.7 FEET TAGGED  
SET B.T. 18" W.F. N 04 1/4 E 27.2 FEET TAGGED  
SET 4 FOOT FENCE POSTS - 1 SOUTH 3 FEET & 1 EAST 3 FEET

### LEGEND

○ MONUMENTS FOUND

● MONUMENTS SET

~~~~~ LINES BLAZED

BASIS OF BEARING IS BY SOLAR OBSERVATION



### SURVEY BY:

STUNTZNER ENGINEERING & FORESTRY  
375 PARK...PO BOX 118...LODS. BAY...ORE

MAP FILE M 63-61

MAP FILE M 63-61