

SURVEY TO SET PROPERTY CORNERS IN SECTION 18, T.27S. R.5W.W.M.

FOR: GENE WAGNER COUNTY SURVEYORS FILE DATA
BY: C & G ENG, INC. DO NOT REMOVE FROM OFFICE

JANUARY 1977

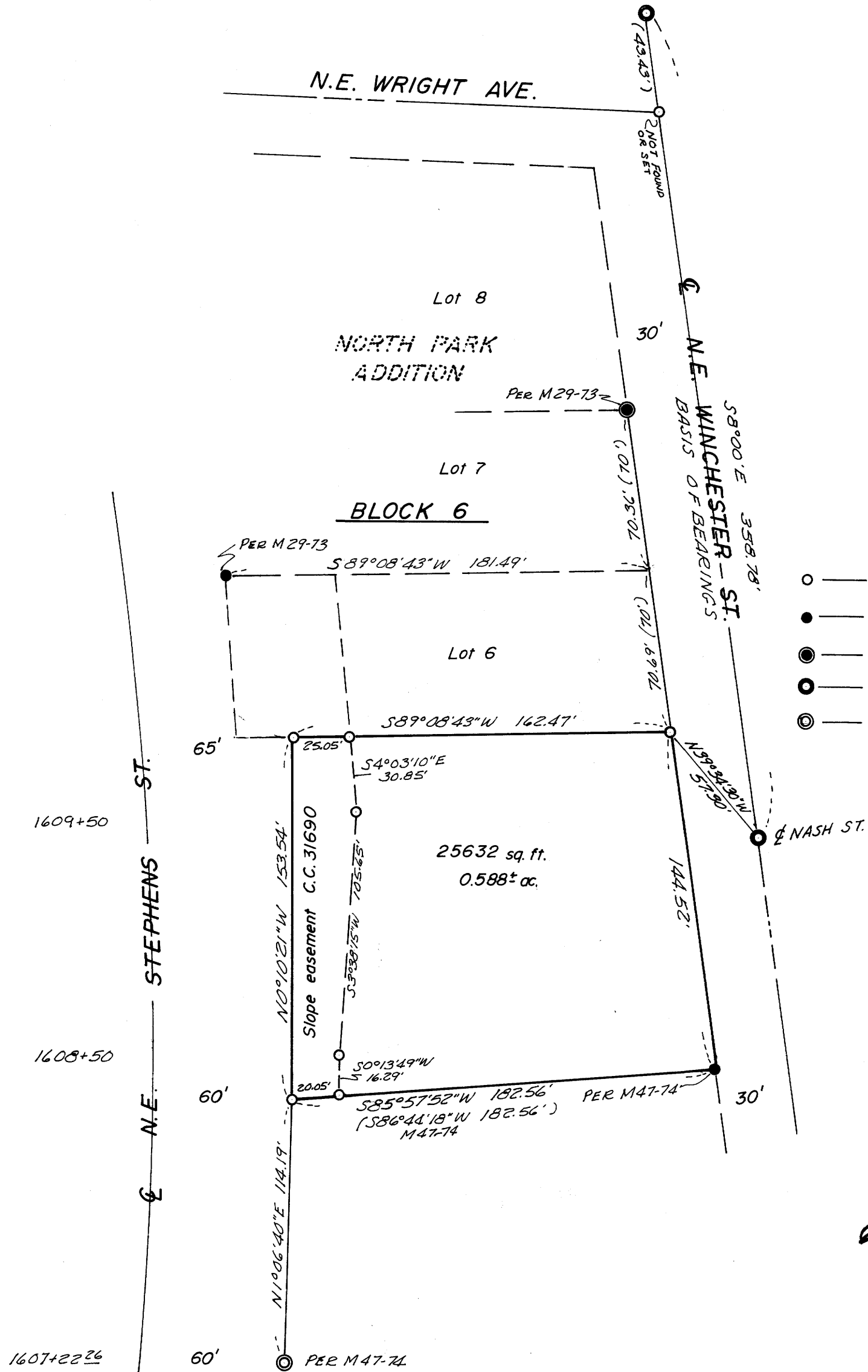
SCALE: 1" = 50'

FILED ✓
RECEIVED ✓
FEB 4 1977

COUNTY SURVEYOR
DOUGLAS COUNTY, ORE.

U

Based on centerline N.E. Winchester St.



LEGEND

- — Set 1/2" iron rod
- — Found 5/8" iron rod
- ⊙ — Found 3/4" iron rod
- ⊙ — Found St. Mon
- ⊙ — Found 3" axle

REGISTERED
PROFESSIONAL
LAND SURVEYOR

Glenn S. Baughman

OREGON
JULY 1, 1941
GLENN S. BAUGHMAN
536

6147.0020

MAP FILE M63-6