

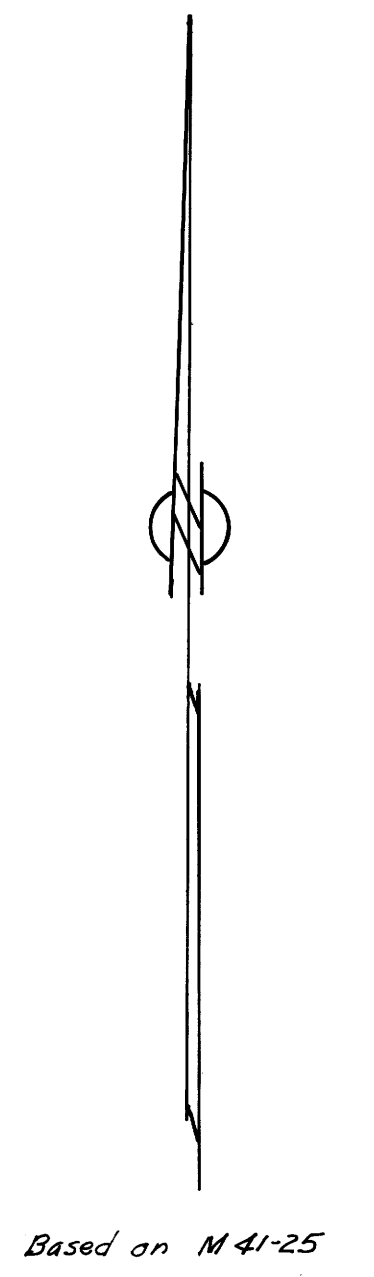
COUNTY SURVEYORS FILE DATA  
DO NOT REMOVE FROM OFFICE

# SURVEY FOR DESCRIPTION

FOR: NATHANIAL EVANS  
SITUATED IN SEC. 22 & 27, T.26S. R.6W.W.M.  
BY: BURTON W. HOLT    MARCH 1977    SCALE: 1"=50'

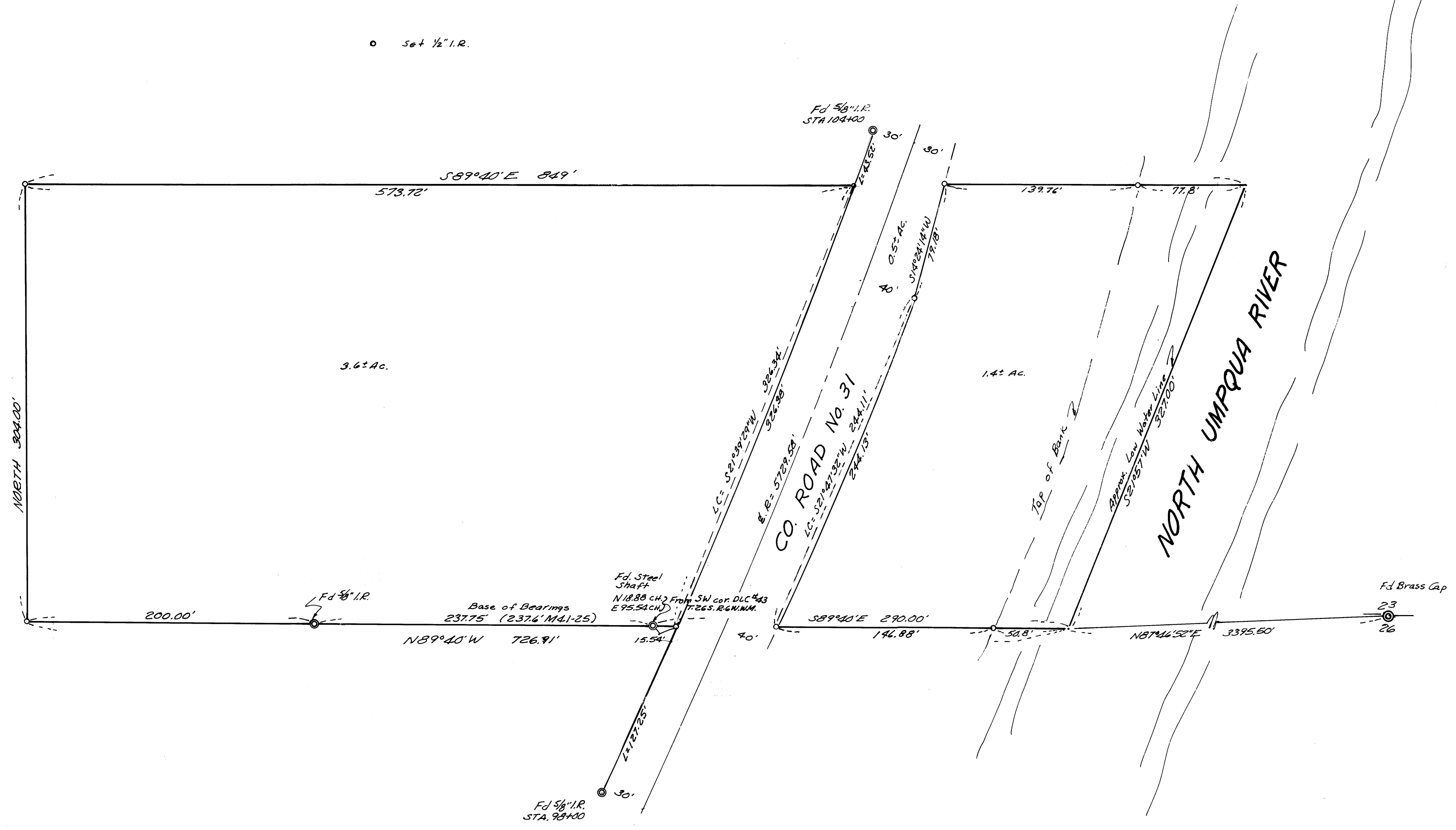
FILED ✓  
RECEIVED M.L.L.  
APR 1 1977  
COUNTY SURVEYOR  
COQUILLE COUNTY, ORE.

o set 1/2" I.R.



REGISTERED  
PROFESSIONAL  
LAND SURVEYOR

OREGON  
BURTON W. HOLT  
118



MAP FILE M 63-56

MAP FILE M 63-56