

COUNTY SURVEYORS FILE DATA
DO NOT REMOVE FROM OFFICE

FILED ✓
RECEIVED MLL

MAR 25 1977

COUNTY SURVEYOR
DOUGLAS COUNTY, ORE.
MC

MAP FILE M63-47

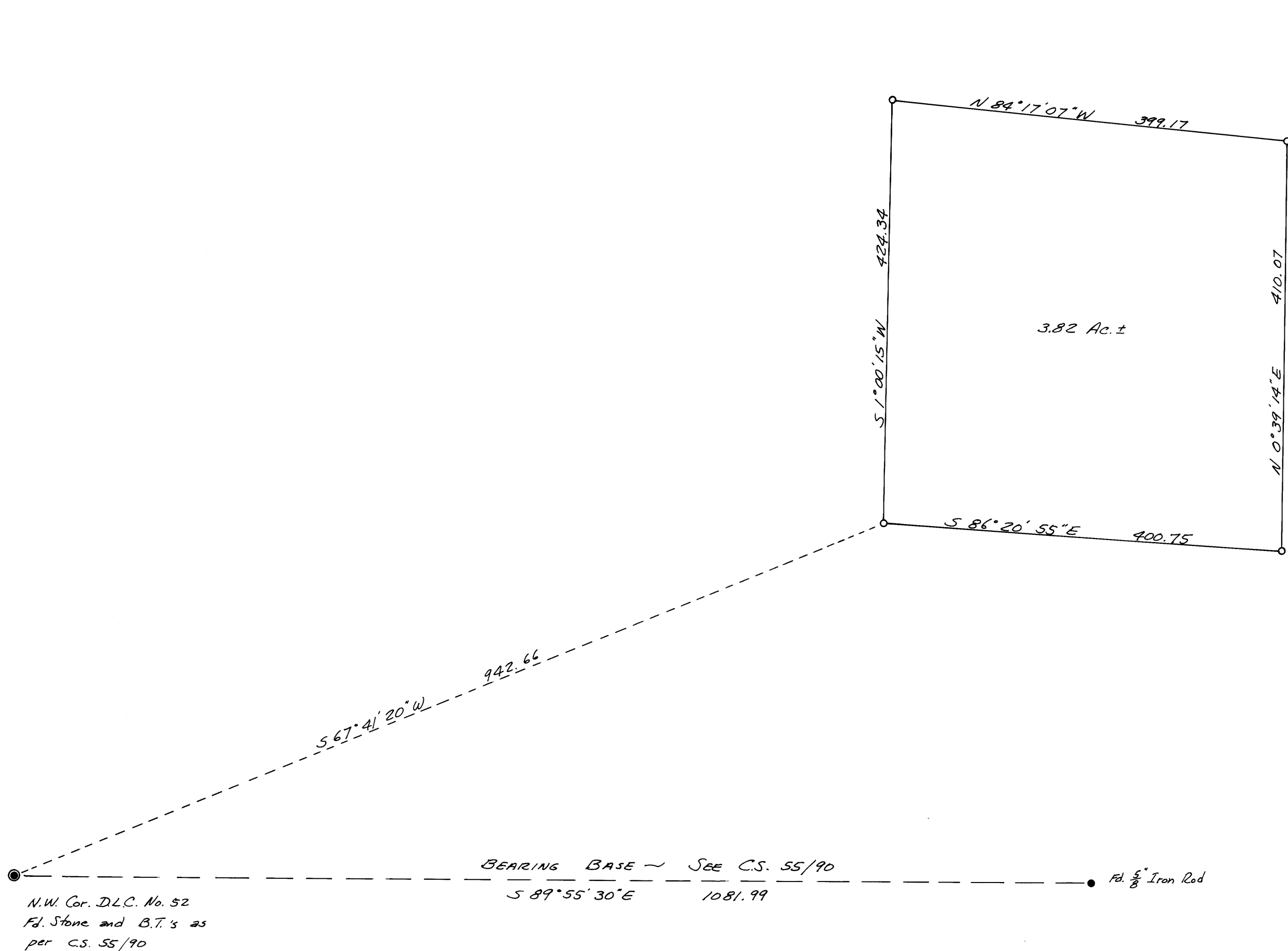
SURVEY FOR LEGAL DESCRIPTION
IN SEC. 20, T27S, R7W, W.M.

Surveyed for James Heard by Victor M. McLind

March, 1977

Scale: 1" = 100'

○ — Indicates Set $\frac{5}{8}$ " x 30" Iron Rod



REGISTERED
PROFESSIONAL
LAND SURVEYOR
Victor M. McLind
1977

MAP FILE M63-47