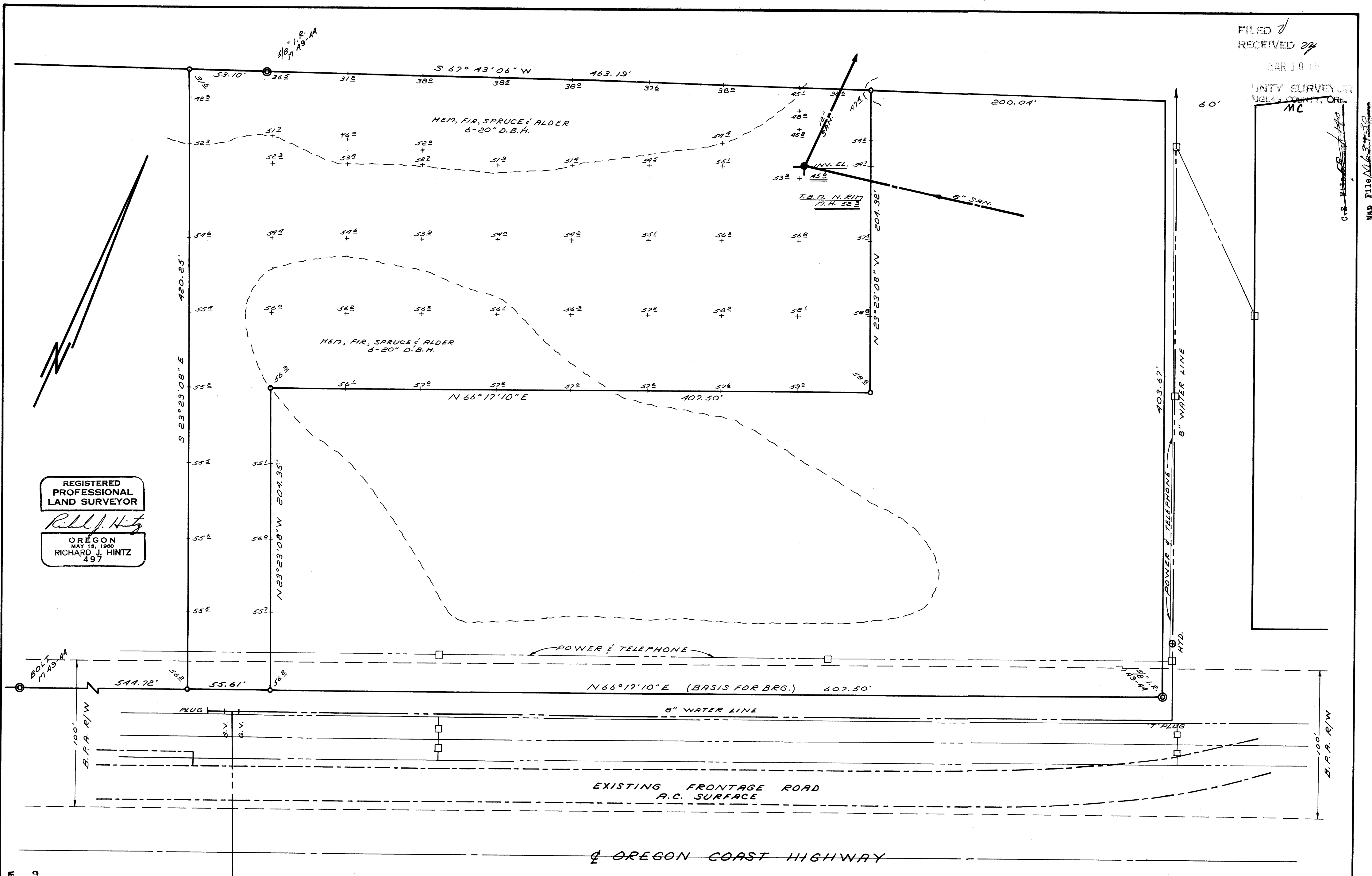


FILED 2
RECEIVED 27

MAR 10 1977

CLATSOP COUNTY, OREGON
COUNTY SURVEYOR
MC

C.S. HINTZ
MAP FILE M 63-23



REGISTERED
PROFESSIONAL
LAND SURVEYOR

Richard J. Hintz

OREGON
MAY 13, 1960
RICHARD J. HINTZ
497

PROPERTY & TOPOGRAPHIC SURVEY
FOR
HEINZ KAUFMANN
NE 1/4, SECTION 4, T 225, R 12 W
FEBRUARY 1977 SCALE 1" = 40'
CORNERS FND. ©
SET 3/8" I.R.'S
DATUM: O.S.H.D.

COUNTY SURVEYORS FILE DATA
DO NOT REMOVE FROM OFFICE

1-25-ZONE CS File goes with
M 63-23

C.S. HINTZ
MAP FILE M 63-23