

Map File M631.23
C.S. File 58/139

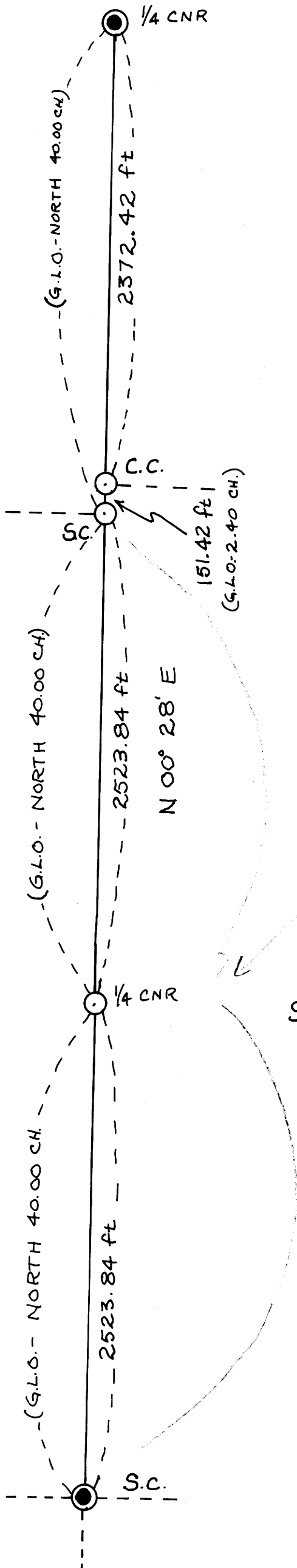
COUNTY SURVEYORS FILE DATA
DO NOT REMOVE FROM OFFICE

WEYERHAEUSER COMPANY
S.W. OREGON REGION
SURVEY IN SECTIONS 29, 30, 31 & 32, T.23S, R.9W, W.M.
DOUGLAS COUNTY, OREGON
FEBRUARY 21, 1977

FILED ✓
RECEIVED ✓
MAR 1 1977
COUNTY SURVEYOR
DOUGLAS COUNTY, ORE.

SECTION 30

SECTION 29



REGISTERED
PROFESSIONAL
LAND SURVEYOR

Michael S. McDowell

OREGON
AUGUST 22 1976
MICHAEL S. McDowell
1032

VOID
SEE 58/139

SECTION 31

SECTION 32

SCALE: 1" = 600'

BASIS OF BEARINGS:
SOLAR OBS.

LEGEND

- CORNERS FOUND
- CORNERS SET
- LINE SURVEYED
- - - LINE PROJECTED

APPROVED: *[Signature]*

DRN: 2-23-77 MSM

C.S. File 58/139

Map File M631.23

M 63-23

February 25, 1977 FILED
RECEIVED *M*

MAR 1 1977

COUNTY SURVEYOR
DOUGLAS COUNTY, ORE.

F.L. Ingram
Douglas County Surveyor
Roseburg, Oregon

Dear Sir:

In order to determine certain Weyerhaeuser Company property boundaries, it was necessary for me to re-establish the standard corner for Sections 30 and 31, T. 23 S., R. 9 W., W.M., and the closing corner to Sections 29 and 32, T. 23 S., R. 9 W., W.M.

In my research, I determined that W.R. Byars surveyed the east line of Section 31, the north line of Section 31, and the east line of Section 30 in 1879; at this time he set a standard corner for Sections 29, 30, 31 and 32. In 1898, Oscar F. Thiel surveyed the east line of Section 32, the east line of Section 29, and the north line of Section 32, in the process, he set a closing corner for Sections 29 and 32 on the east line of Section 30.

Following the instructions of the BLM Manual of Surveying Instructions, 1973, pp. 137-138, I determined a closing distance between the SE corner of Section 31 and the E. 1/4 corner of Section 30, the nearest known corners on that meridional line. I then set the SE corner of Section 30 at the proportionate distance between the two control points. I then set the closing corner for sections 29 and 32; The proportionate distance along the east line of Section 30.

The following is a record of all corners either found or set during the course of the survey.

SW Corner Section 32, T. 23 S., R. 9 W., W.M.;

Found: 3/4" galvanized iron pipe, placed by Weyerhaeuser Co. engineers in 1974, from which:
a 18" fir stump (OBT) scar evident, bears N. 40° E. 9.9 feet
a 36" fir windfall (OBT), face evident bears N. 53° W, 33.0 feet
a 12" chinquapin RP bears N. 76° 30' E., 19.9 feet
a 12" fir RP bears S. 15° 30' E., 19.8 feet
a 8" fir RP bears S. 52° W., 6.8 feet
a 8" fir RP bears N. 81° W., 27.6 feet

#78
#15, 124-9

W 1/4 Corner Section 29, T. 23 S., R. 9 W., W.M.;

Found: 2" galvanized iron pipe with brass cap, set by Douglas County in 1973, from which:
a 36" fir stump (OBT) scribing visible and BLM tag present, bears N 20° E., 12.8 feet
a 8" fir BT, tag present and face evident bears N., 03° 30' E., 18.8 feet

C. S. File No. 58/139 -3A

M 63-23

E 1/4 Corner Section 31, T. 23 S., R. 9 W., W.M.;

Set: 1-1/2" galvanized iron pipe with brass cap, from which:
a 48" fir stump BT, bark scribed, bears S. 48° 30' W., 53.6 feet
a 36" fir stump RP bears S. 31° 30' E., 37.1 feet

#79

NE Corner Section 31, T. 23 S., R. 9 W., W.M.;

Set: 1-1/2" galvanized iron pipe with brass cap, from which:
a 6" fir BT, scribed, bears S. 57° 30' W., 43.2 feet
a 4" fir BT, scribed bears N. 35° W., 22.4 feet

#80

NW Corner Section 32, T. 23 S., R. 9 W., W.M.;

Set: 1-1/2" galvanized iron pipe with brass cap, from which:
a 4" fir BT, scribed, bears N. 04° E., 33.0 feet
a 42" fir BT, bark scribed, bears S. 16° E., 92.5 feet

#81

In addition to the corners re-established, I traversed the east half of the north line of Section 31, and the west half of the north line of Section 32, and located Company boundaries on these two lines by offsets to true line. The property lines were marked with blazes, aluminum strips, and candy-striped plastic flagging ribbon, where they passed through merchantable timber.

Equipment used included a Wild T 16 ED theodolite and 300-foot steel tape. All bearings on the accompanying plat are based on solar observation.

Respectfully submitted,

Michael S. McDowell
Michael S. McDowell
L.S. 1032

APPROVED:

Henry R. Reppeto
Henry R. Reppeto
Region Woods Engineer

FILED
RECEIVED *M*

MAR 1 1977

COUNTY SURVEYOR
DOUGLAS COUNTY, ORE.

REGISTERED
PROFESSIONAL
LAND SURVEYOR

Michael S. McDowell

OREGON
AUGUST 22, 1975
MICHAEL S. McDOWELL
1032