

COUNTY SURVEYORS FILE DATA
DO NOT REMOVE FROM OFFICE

SURVEY TO SET PROPERTY CORNERS
IN SEC. 3, T25S, R5W, W.M.
Surveyed for Donald Keep by Victor M. McLind
Feb. 1977

Scale: 1" = 50'

o ~ Indicates Set 5/8" x 30" Iron Rod

FILED ✓
RECEIVED DLS

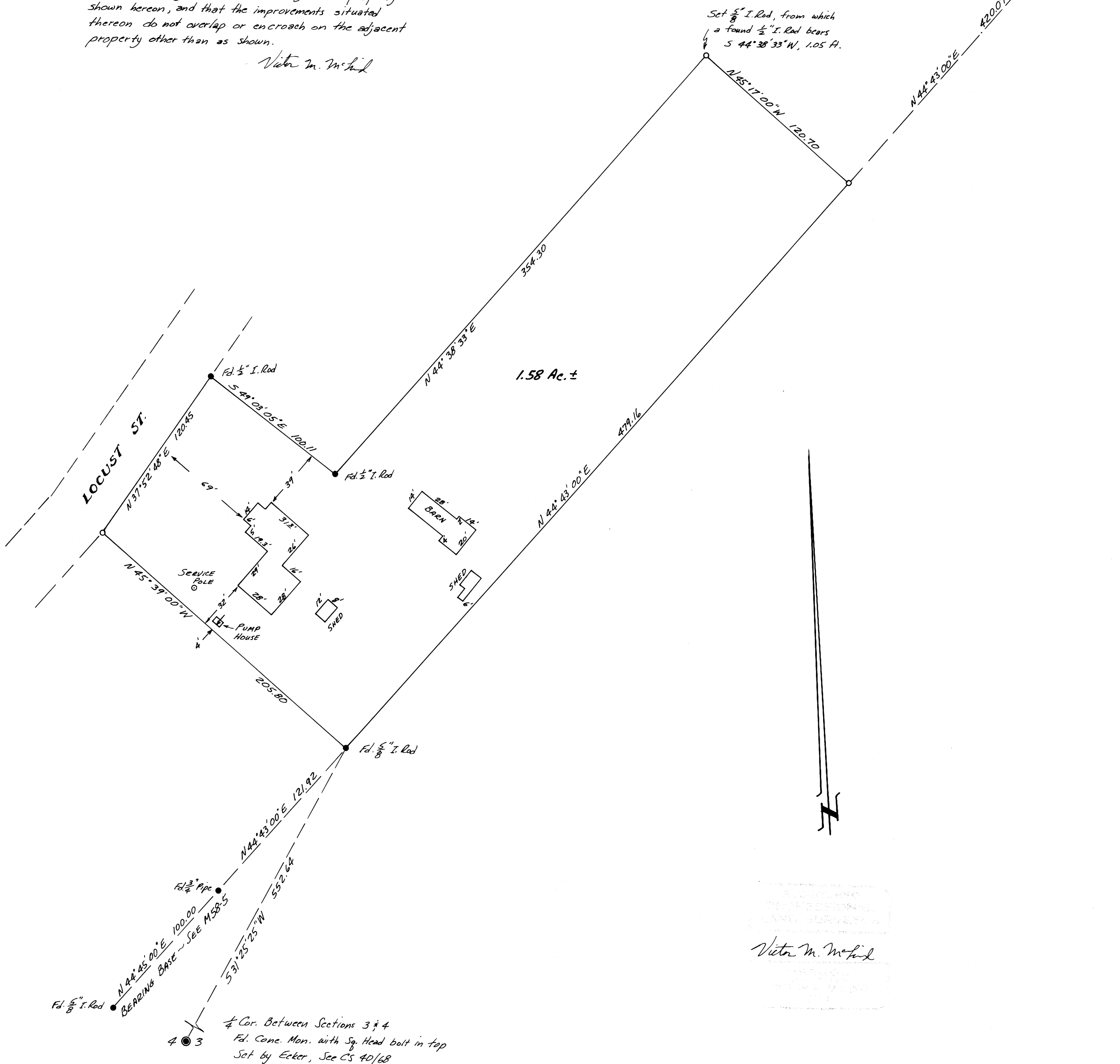
MAR 1 1977

COUNTY SURVEYOR
DOUGLAS COUNTY, OKLA

✓
Easterly corner of Vol. 151
of Deeds, Page 83, from which
a 15" Fir (Now stump)
bears N 0° 0' 0" E 1.00 ft.
(Corner calculated from
fd. stump but not set)

This is to certify that I have surveyed the property
shown hereon, and that the improvements situated
thereon do not overlap or encroach on the adjacent
property other than as shown.

Victor M. McLind



Victor M. McLind
FEB 19 1977

1/4 Cor. Between Sections 3 & 4
Fd. Conc. Mon. with Sq. Head bolt in top
Set by Ecker, See CS 40/68