

SURVEY TO SET PROPERTY CORNERS IN SECTION 32, T.29S., R.5W. W.M.

FOR: EARTH SPACE PROPERTIES
BY: C & G ENG, INC.

JANUARY 1977

SCALE: 1" = 200'

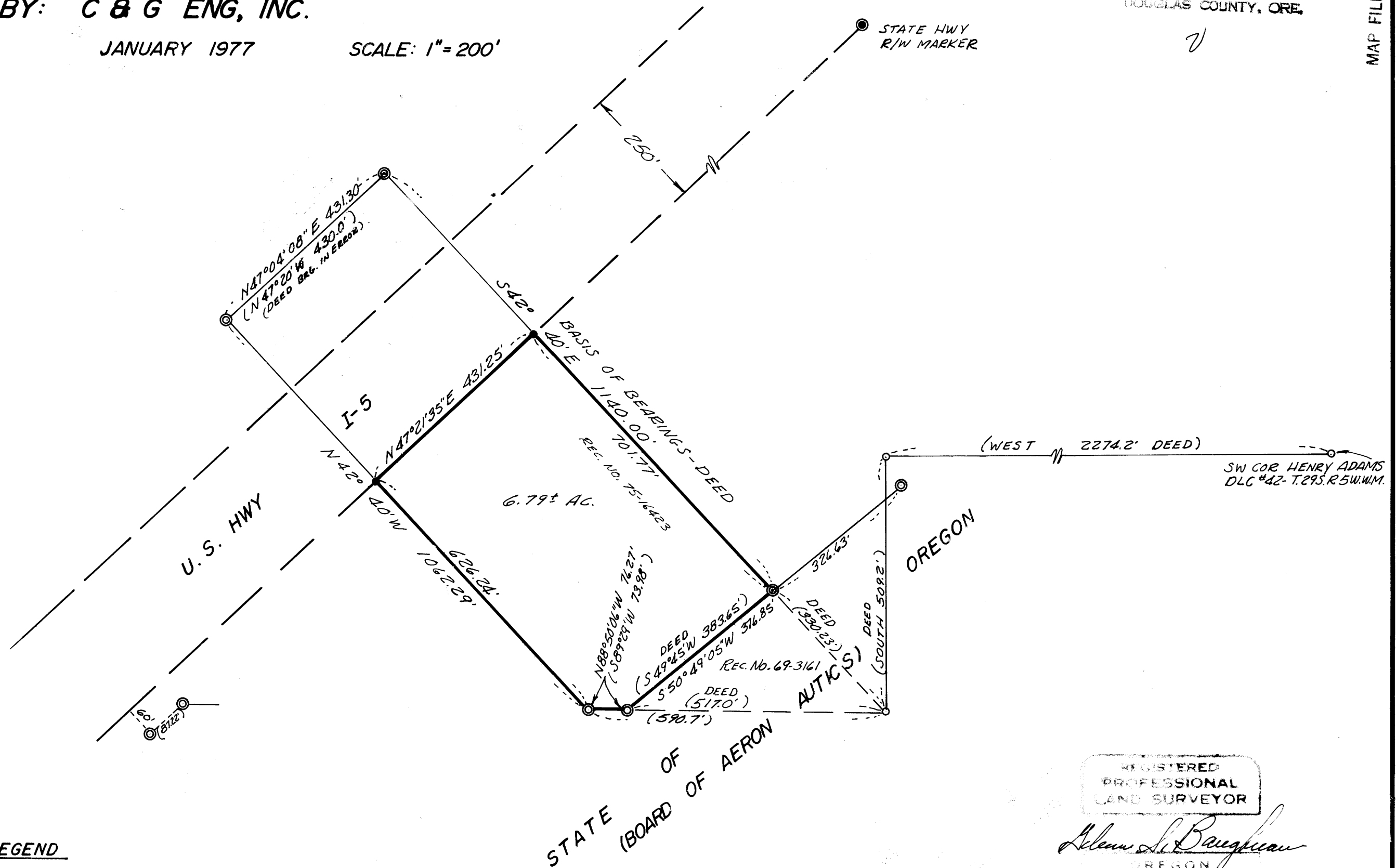
FILED ✓
RECEIVED 24

JAN 25 1977

COUNTY SURVEYOR
DOUGLAS COUNTY, ORE.

MAP FILE M63 - 2

BASED ON NORTHERLY LINE DEED DESCRIPTION



LEGEND

- — Set 1/2 iron rod
- ⊙ — Found 1" iron pipe
- ⊙ — Found I.R. with Alum. cap
- — Not found or set

REGISTERED
PROFESSIONAL
LAND SURVEYOR
Allen S. Baughman
OREGON
JULY 14 1981
ALLEN S. BAUGHMAN
538

COUNTY SURVEYORS FILE DATA
DO NOT REMOVE FROM OFFICE

MAP FILE M63 - 2