

COUNTY SURVEYORS FILE DATA
DO NOT REMOVE FROM OFFICE

SURVEY IN BLOCK 11, JONES' ADD.
ROSEBURG, ORE.

SEC. 18, T27S, R5W, W.M.

SURVEYED FOR - LOUISE EVANS REALTY
SURVEYED BY - W.S. BARNES

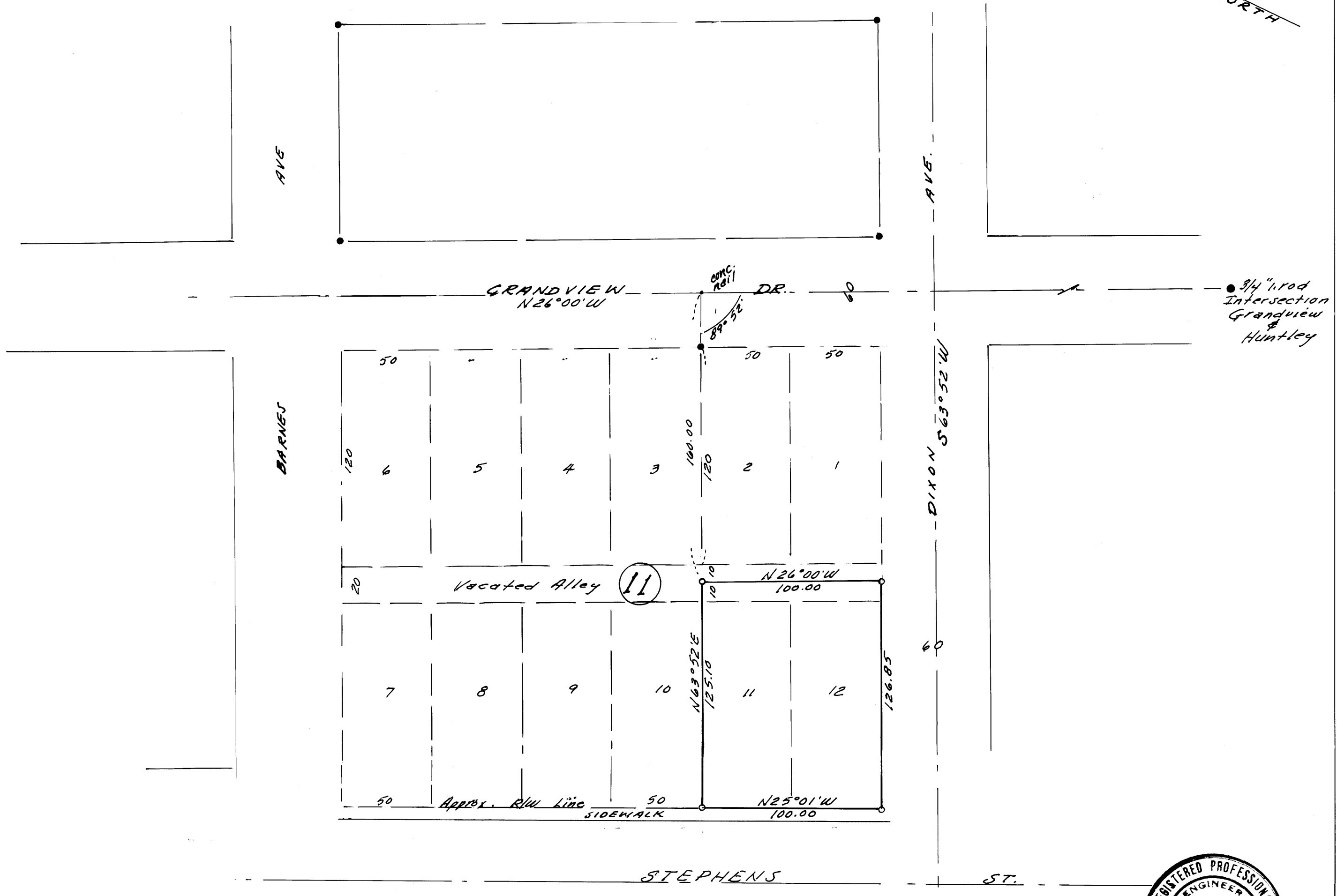
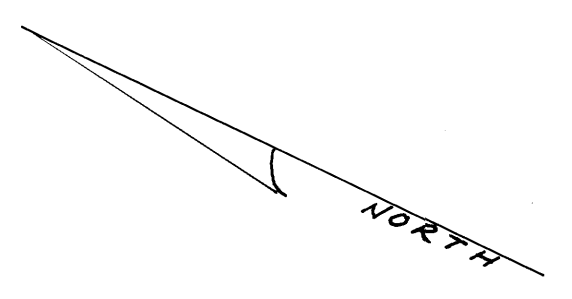
FEB. 1977
SCALE 1" = 50'

FILED ✓
RECEIVED ✓
FEB 17 1977

COUNTY SURVEYOR
DOUGLAS COUNTY, ORE.

✓

MAP FILE N. 63 - 16



MAP FILE N. 63 - 16

