

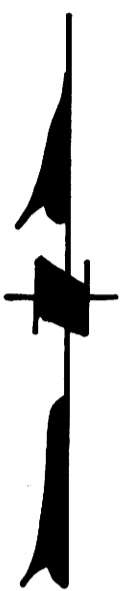
COUNTY SURVEYORS FILE DATA
DO NOT REMOVE FROM OFFICE

FILED
RECEIVED

JAN 12 1977

COUNTY SURVEYOR
DOUGLAS COUNTY, ORE.

SURVEY
OF
SOUTH HALF
SECTION 10, T25S, R2W, W.M.
FOR
WEYERHAEUSER COMPANY

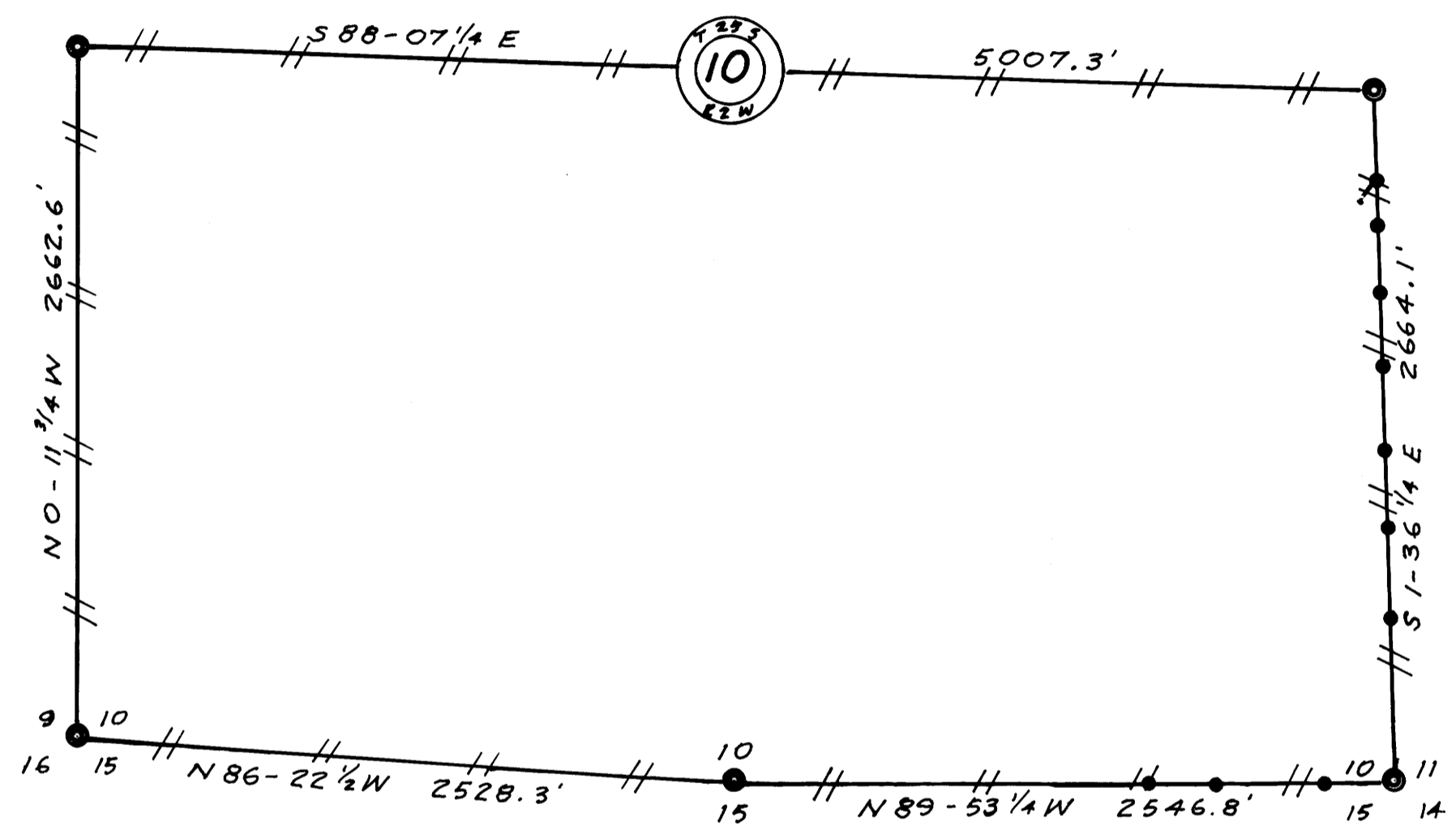


W 1/4 CORNER
FOUND:
BLM BRASS CAP 1962
28" CEDAR, N1E, 20.0'
SCRIBE VISIBLE
22" HEM STUMP
N26W, 66.0'
SCRIBE VISIBLE

E 1/4 CORNER
FOUND:
BLM BRASS CAP 1962
12" HEM, S24 1/2 E, 23.1'
CLOSED FACE
38" CEDAR, S2E, 24.0'
CLOSED FACE & W.CO. R.P.
42" FIR, S53W, 25.8'
CLOSED FACE & W.CO. R.P.

S.W. SECTION CORNER
FOUND:
BLM BRASS CAP 1962
54" FIR, N37E, 10.0'
CLOSED FACE & W.CO. R.P.
48" FIR, S33E, 44.0'
BARK SCRIBE & W.CO. R.P.
24" FIR STUMP, S5W, 39.8'
BARK SCRIBE
18" FIR, S36W, 36.3'
CLOSED FACE

S.E. SECTION CORNER
FOUND:
DOUGLAS CO. BRASS CAP
26" HEM, N20E, 57.1'
SCRIBE VISIBLE
18" CEDAR, N46E, 46.0'
W.CO. R.P.
22" CEDAR, S85E, 51.2'
SCRIBE VISIBLE
18" HEM STUB, S45E, 18.3'
SCRIBE VISIBLE
14" CEDAR, S11W, 30.6'
W.CO. R.P.
12" CEDAR, S56W, 22.4'
SCRIBE VISIBLE
26" CEDAR STUMP, NBOW, 58.9'
SCRIBE VISIBLE



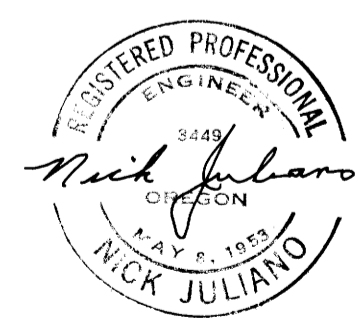
LEGEND:

CORNER FOUND
LINE BLAZED
IRON FENCE POST SET
BEARING BASIS - S 1/2 EAST LINE
FROM PREVIOUS SURVEY
SCALE: 1" = 600'

S 1/4 CORNER
FOUND:
BLM BRASS CAP 1962
12" CHINQUAPIN, N30 1/2 E, 41.6'
SCRIBE VISIBLE
72" FIR, N66E, 19.8'
BARK SCRIBE & W.CO. R.P.
9" FIR, S3 1/2 E, 38.9'
CLOSED FACE

DEC. 1976

BY:
TRIANGLE ENGR. CO.
EUGENE, OR. 97401



PRECISION
1/21, 860

MAP FILE M.62 - 74

MAP FILE M.62 - 74