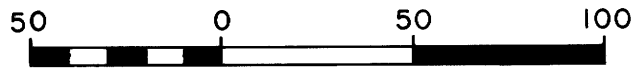


COUNTY SURVEYORS FILE DATA
DO NOT REMOVE FROM OFFICE

Vol 2 pg. 277A



Bearings based on record \odot
of Curry Road



Scale: 1" = 50'

LEGEND

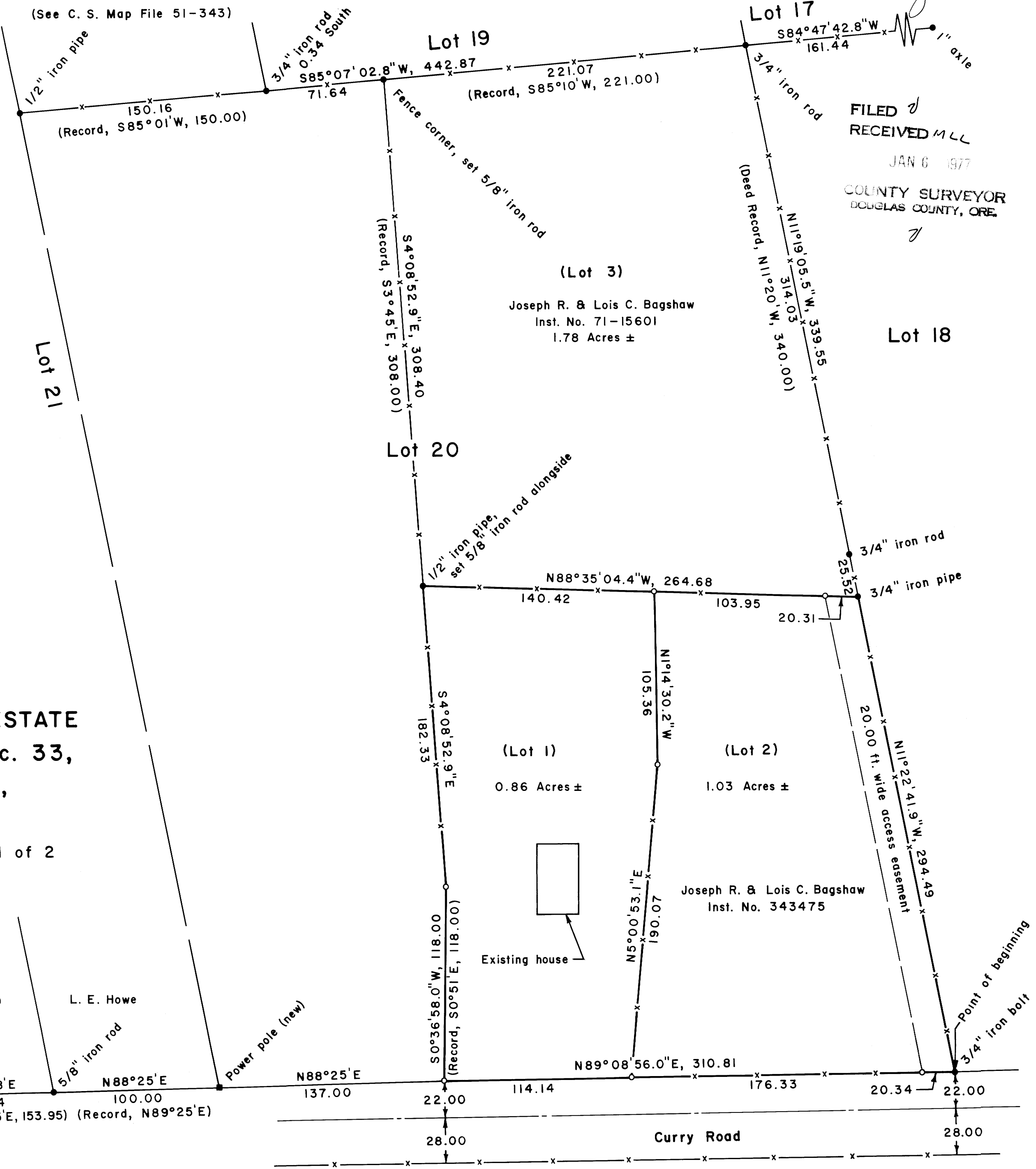
- Corner found, as noted
- Corner set, 5/8" iron rod with aluminum cap
- x-x- Fence

**MINOR LAND PARTITION
IN LOT 20, PLAT "C"
OF THE N. CURRY ESTATE
in the NE 1/4 SW 1/4 Sec. 33,
T. 26 S., R. 6 W., W. M.,
Douglas County, Oregon**

September 15, 1976 Page 1 of 2

(See C. S. Map File M54-22)

(See C. S. Map File 51-343)



MAP FILE M62-72B

MAP FILE M62-72B