

SURVEY TO SET PROPERTY CORNERS

LOTS 12, 13, 14, BLOCK 13, AMENDED PLAT TOWNSITE OF SUTHERLIN

FOR: WAYNE HALL — BY: C & G ENG, INC. COUNTY SURVEYORS FILE DATA

NOVEMBER 1976 — SCALE: 1"=50'

DO NOT REMOVE FROM OFFICE

FILED
RECEIVED

DEC 30 1976

COUNTY SURVEYOR
DOUGLAS COUNTY, ORE.

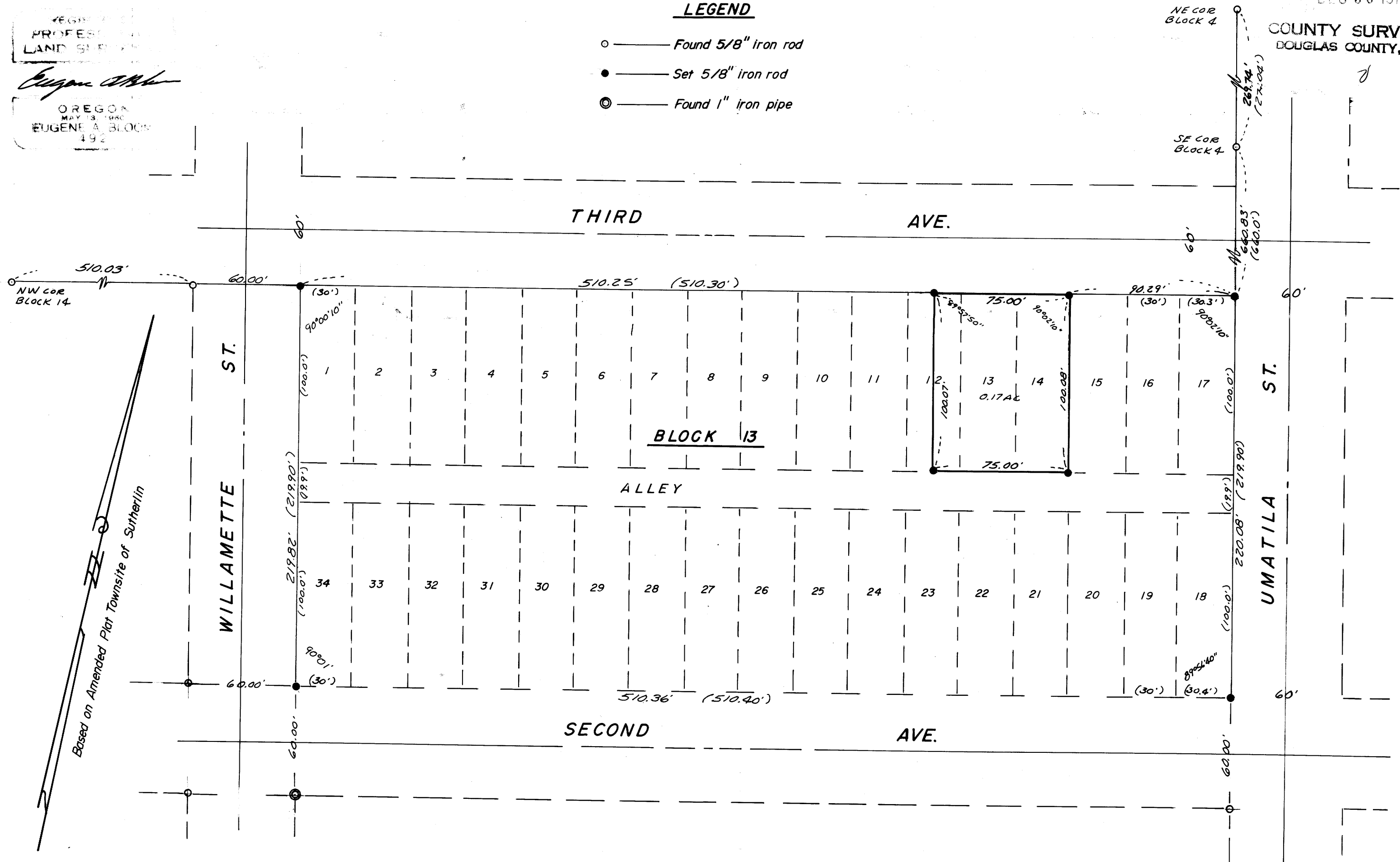
REGISTERED
PROFESSIONAL
LAND SURVEYOR

Eugene A. Bloom

OREGON
MAY 13, 1960
EUGENE A. BLOOM
192

LEGEND

- — Found 5/8" iron rod
- — Set 5/8" iron rod
- ⊙ — Found 1" iron pipe



MAP FILE M62-58

SEC. 17 T25S. R5W. W.M.

6140.0060

MAP FILE M62-58