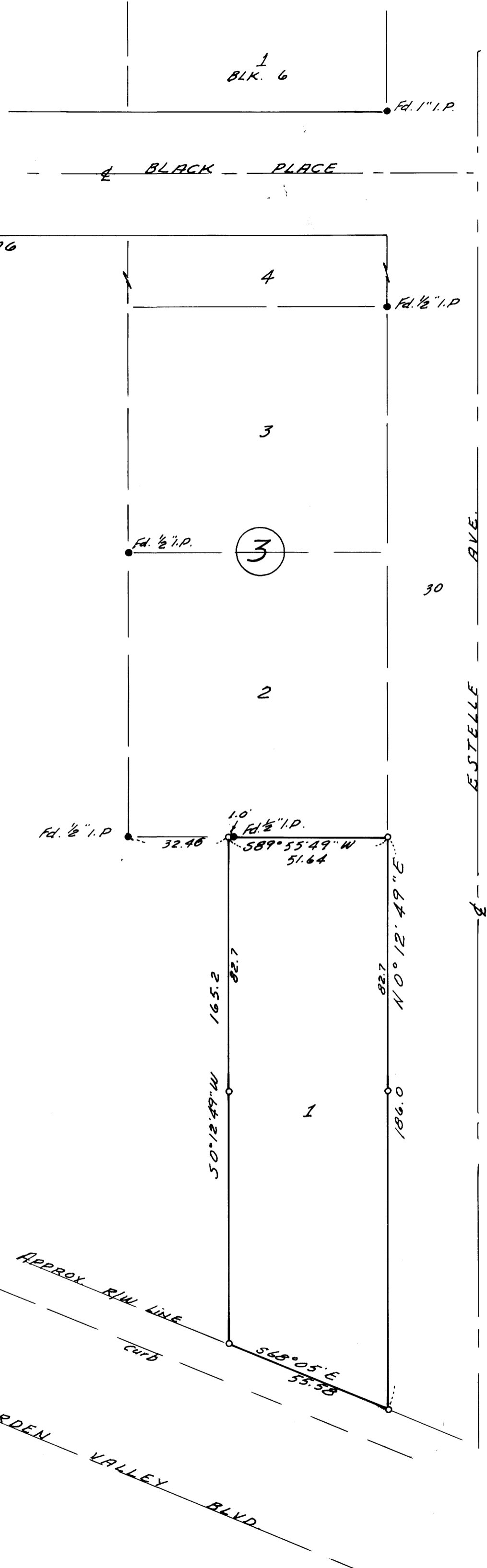


COUNTY SURVEYORS FILE DATA  
DO NOT REMOVE FROM OFFICE

SURVEY OF LOT 1, BLK. 3,  
HOUSLEY HEIGHTS,  
SEC. 11, T 27 S, R 6 W. W.M.

SURVEYED FOR - J.V. LONG  
SURVEYED BY - W.S. BARNES DEC. 1976

FILED  
RECEIVED  
DEC 29 1976  
COUNTY SURVEYOR  
DOUGLAS COUNTY, OREG.



SCALE 1" = 30'

- Monuments found.
- o 5/8" iron rods set.

Base bearing taken from Estelle Ave. R/W.

