

SURVEY IN SECTION 11, T27S, R6W, W.M.

Survey for Darkey Ware & Cecil Hugh Scale 1" = 100'

NOTE: PRELIMINARY SURVEY DATA WAS MADE PRIOR TO COMPLETION OF THE STEWART-PARKWAY COUNTY SURVEYOR ROAD. HOWEVER MONUMENTATION & COMPLETION OF DOUGLAS COUNTY, ORE SURVEY WAS NOT MADE UNTIL DECEMBER, 1976.

COUNTY SURVEYORS FILE DATA
DO NOT REMOVE FROM OFFICE

REGISTERED
PROFESSIONAL
LAND SURVEYOR

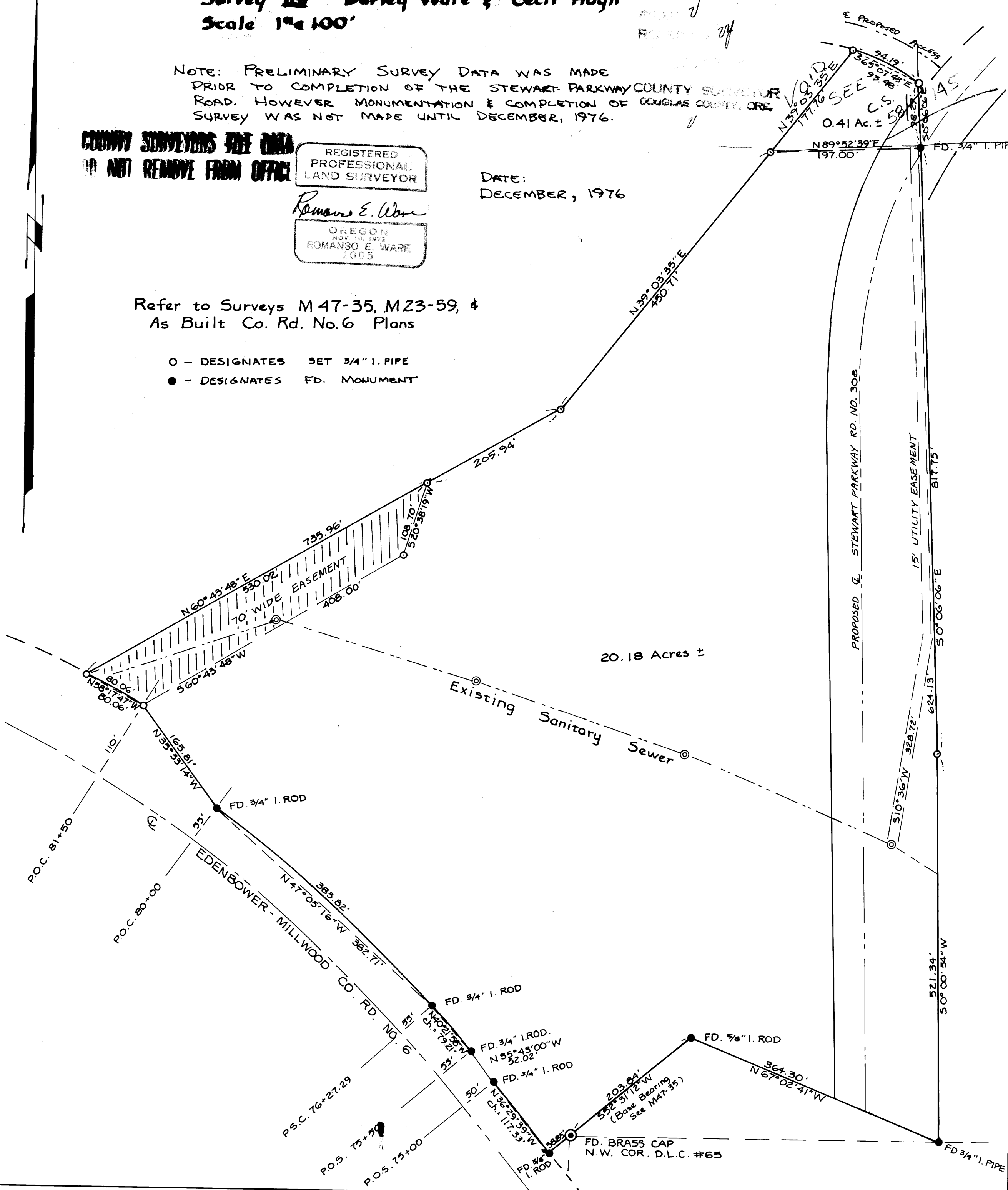
Romanso E. Ware

OREGON
NOV. 18, 1973
ROMANSO E. WARE
1005

DATE:
DECEMBER, 1976

Refer to Surveys M47-35, M23-59, &
As Built Co. Rd. No. 6 Plans

- - DESIGNATES SET 3/4" I. PIPE
- - DESIGNATES FD. MONUMENT



20.18 Acres ±